

CODE ANALYSIS

ALLOWABLE NUMBER OF STORIES - TABLE 504.4 A,B,N

| OCCUPANCY CLASSIFICATION | See Footnotes             | TYPE OF CONSTRUCTION |    |         |   |          |   |         |    |   |        |   |   |
|--------------------------|---------------------------|----------------------|----|---------|---|----------|---|---------|----|---|--------|---|---|
|                          |                           | Type I               |    | Type II |   | Type III |   | Type IV |    |   | Type V |   |   |
|                          |                           | A                    | B  | A       | B | A        | B | A       | B  | C | HT     | A | B |
|                          |                           |                      |    |         |   |          |   |         |    |   |        |   |   |
| A-3                      | NS                        | UL                   | 11 | 3       | 2 | 3        | 2 | 3       | 3  | 3 | 3      | 2 | 1 |
|                          | S (without area increase) | UL                   | 12 | 4       | 3 | 4        | 3 | 18      | 12 | 8 | 4      | 3 | 2 |
|                          | S (with area increase)    | UL                   | 11 | 3       | 2 | 3        | 2 | 17      | 11 | 5 | 3      | 2 | 1 |

ALLOWABLE HEIGHT - TABLE 504.3 A,I

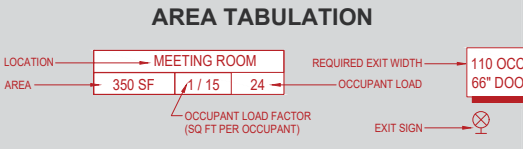
| OCCUPANCY CLASSIFICATION | See Footnotes             | TYPE OF CONSTRUCTION |     |         |    |          |    |         |     |    |        |    |    |
|--------------------------|---------------------------|----------------------|-----|---------|----|----------|----|---------|-----|----|--------|----|----|
|                          |                           | Type I               |     | Type II |    | Type III |    | Type IV |     |    | Type V |    |    |
|                          |                           | A                    | B   | A       | B  | A        | B  | A       | B   | C  | HT     | A  | B  |
|                          |                           |                      |     |         |    |          |    |         |     |    |        |    |    |
| A,E                      | NS <sup>1</sup>           | UL                   | 160 | 65      | 55 | 65       | 55 | 65      | 65  | 65 | 65     | 50 | 40 |
|                          | S (without area increase) | UL                   | 180 | 85      | 75 | 85       | 75 | 270     | 180 | 85 | 85     | 70 | 60 |
|                          | S (with area increase)    | UL                   | 160 | 65      | 55 | 65       | 55 | 250     | 160 | 65 | 65     | 50 | 40 |

ALLOWABLE AREA DETERMINATION - TABLE 506.2 A,B,J

| OCCUPANCY CLASSIFICATION | SEE FOOTNOTES                | TYPE OF CONSTRUCTION |    |         |        |          |        |         |         |        |        |        |        |
|--------------------------|------------------------------|----------------------|----|---------|--------|----------|--------|---------|---------|--------|--------|--------|--------|
|                          |                              | Type I               |    | Type II |        | Type III |        | Type IV |         |        | Type V |        |        |
|                          |                              | A                    | B  | A       | B      | A        | B      | A       | B       | C      | HT     | A      | B      |
|                          |                              |                      |    |         |        |          |        |         |         |        |        |        |        |
| A-1                      | NS                           | UL                   | UL | 15,000  | 5,000  | 14,000   | 5,000  | 45,000  | 30,000  | 18,700 | 15,000 | 11,000 | 6,000  |
|                          | S1                           | UL                   | UL | 60,000  | 30,000 | 50,000   | 30,000 | 180,000 | 120,000 | 75,000 | 60,000 | 40,000 | 20,000 |
|                          | S2 (pathway height increase) | UL                   | UL | 40,000  | 20,000 | 42,000   | 20,000 | 120,000 | 80,000  | 38,700 | 45,000 | 34,000 | 18,000 |
|                          | S3 (path height increase)    | UL                   | UL | 15,000  | 5,000  | 14,000   | 5,000  | 45,000  | 30,000  | 18,700 | 15,000 | 11,000 | 6,000  |

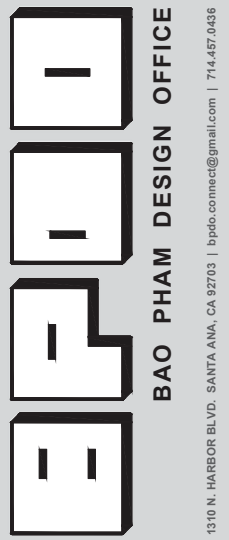
| EGRESS SUMMARY                     |      |
|------------------------------------|------|
| TOTAL OCCUPANTS                    | 295  |
| EGRESS WIDTH PER PERSON:           | 0.20 |
| REQUIRED EGRESS WIDTH (IN INCHES): | 59   |
| ACTUAL EGRESS WIDTH (IN INCHES):   |      |
| (6) 36" DOORS AT 33" NET           | 198  |
| MAX ALLOWABLE TRAVEL DISTANCE      | 250' |
| MAX PROJECT TRAVEL DISTANCE        | 88'  |

| CODE SUMMARY                          |  |
|---------------------------------------|--|
| 2022 CALIFORNIA BUILDING CODE         |  |
| 2022 CALIFORNIA ELECTRICAL CODE       |  |
| 2022 CALIFORNIA MECHANICAL CODE       |  |
| 2022 CALIFORNIA PLUMBING CODE         |  |
| 2022 CALIFORNIA FIRE CODE             |  |
| 2022 CALIFORNIA ENERGY CODE           |  |
| 2022 CALIFORNIA CALGREEN CODE         |  |
| 2022 CITY OF SANTA ANA MUNICIPAL CODE |  |



| LOCATION         | OCCUPANCY | AREA           | OCC FACTOR | OCC LOAD   | COMMENT |
|------------------|-----------|----------------|------------|------------|---------|
| ALTER/NAVE       | A-3       | 1947 SF        | 18"/OCC    | 152        | -       |
| FELLOWSHIP HALL  | A-3       | 750 SF         | 1 / 15     | 50         | -       |
| LOBBY            | A-3       | 400 SF         | 1 / 15     | 27         | -       |
| MEETING ROOM 1   | A-3       | 448 SF         | 1 / 15     | 30         | -       |
| MEETING ROOM 2   | A-3       | 448 SF         | 1 / 15     | 30         | -       |
| <b>A-3 TOTAL</b> | -         | <b>3993 SF</b> | -          | <b>289</b> | -       |
| KITCHENETTE      | B         | 223 SF         | 1 / 200    | 2          | -       |
| <b>B TOTAL</b>   | -         | <b>223SF</b>   | -          | <b>2</b>   | -       |
| STORAGE 1        | S-2       | 86 SF          | 1 / 300    | 1          | -       |
| UTILITY CLOSET 1 | S-2       | 56 SF          | 1 / 300    | 1          | -       |
| UTILITY CLOSET 2 | S-2       | 56 SF          | 1 / 300    | 1          | -       |
| UTILITY CLOSET 3 | S-2       | 25 SF          | 1 / 300    | 1          | -       |
| <b>S-2 TOTAL</b> | -         | <b>223 SF</b>  | -          | <b>4</b>   | -       |
| MALE RESTROOM    | -         | 295 SF         | -          | -          | -       |
| FEMALE RESTROOM  | -         | 270 SF         | -          | -          | -       |
| CIRCULATION      | -         | 996 SF         | -          | -          | -       |
| <b>TOTAL</b>     | -         | <b>6000 SF</b> | -          | <b>295</b> | -       |

| PLUMBING FIXTURE COUNT   |                                   |                                   |          |       |
|--|-----------------------------------|-----------------------------------|----------|-------|
| OCCUPANCY GROUP: A-3 (ASSEMBLY)  |                                   |                                   |          |       |
| AREA: 3993 SF  |                                   |                                   |          |       |
| 30 SQ FT PER OCCUPANT = 134 OCCUPANTS;<br>67 MEN : 67 WOMEN  |                                   |                                   |          |       |
| FIXTURE  | REQUIRED                          |                                   | REQUIRED |       |
|  | MEN                               | WOMEN                             | MEN      | WOMEN |
| WATER CLOSET   | 1:1-100<br>2:101-200<br>3:201-300 | 1:1-25<br>2:26-50<br>3:51-100     | 1        | 3     |
| LAVATORY   |                                   |                                   | 1        | 1     |
| URINAL   |                                   |                                   | 1        |       |
| OCCUPANCY GROUP: B (BUSINESS)  |                                   |                                   |          |       |
| AREA: 240 SF   |                                   |                                   |          |       |
| 150 SQ FT PER OCCUPANT = 2 OCCUPANTS;<br>1 MEN : 1 WOMEN   |                                   |                                   |          |       |
| FIXTURE  | REQUIRED                          |                                   | REQUIRED |       |
|  | MEN                               | WOMEN                             | MEN      | WOMEN |
| WATER CLOSET   | 1:1-50<br>2:51-100<br>3:101-200   | 1:1-15<br>2:16-30<br>3:31-50      | 1        | 1     |
| LAVATORY   |                                   |                                   | 1        | 1     |
| URINAL   |                                   |                                   | 1        |       |
| OCCUPANCY GROUP: S-2 (STORAGE)   |                                   |                                   |          |       |
| AREA: 198 SF   |                                   |                                   |          |       |
| 500 SQ FT PER OCCUPANT = 2 OCCUPANTS;<br>1 MEN : 1 WOMEN   |                                   |                                   |          |       |
| FIXTURE  | REQUIRED                          |                                   | REQUIRED |       |
|  | MEN                               | WOMEN                             | MEN      | WOMEN |
| WATER CLOSET   | 1:1-100<br>2:101-200<br>3:201-400 | 1:1-100<br>2:101-200<br>3:201-400 | 1        | 1     |
| LAVATORY   |                                   |                                   | 1        | 1     |
| URINAL   |                                   |                                   |          |       |
| TOTAL REQUIRED & PROVIDED  |                                   |                                   |          |       |
| FIXTURE  | REQUIRED                          |                                   | PROVIDED |       |
|  | MEN                               | WOMEN                             | MEN      | WOMEN |
| WATER CLOSET   | 3                                 | 5                                 | 3        | 5     |
| LAVATORY   | 3                                 | 3                                 | 3        | 4     |
| URINAL   | 2                                 |                                   | 3        |       |
| ** TOTAL # REQ'D FOR WOMEN SHALL NOT BE LESS THAN TOTAL<br># WATER CLOSETS + URINALS REQ'D FOR MEN |                                   |                                   |          |       |

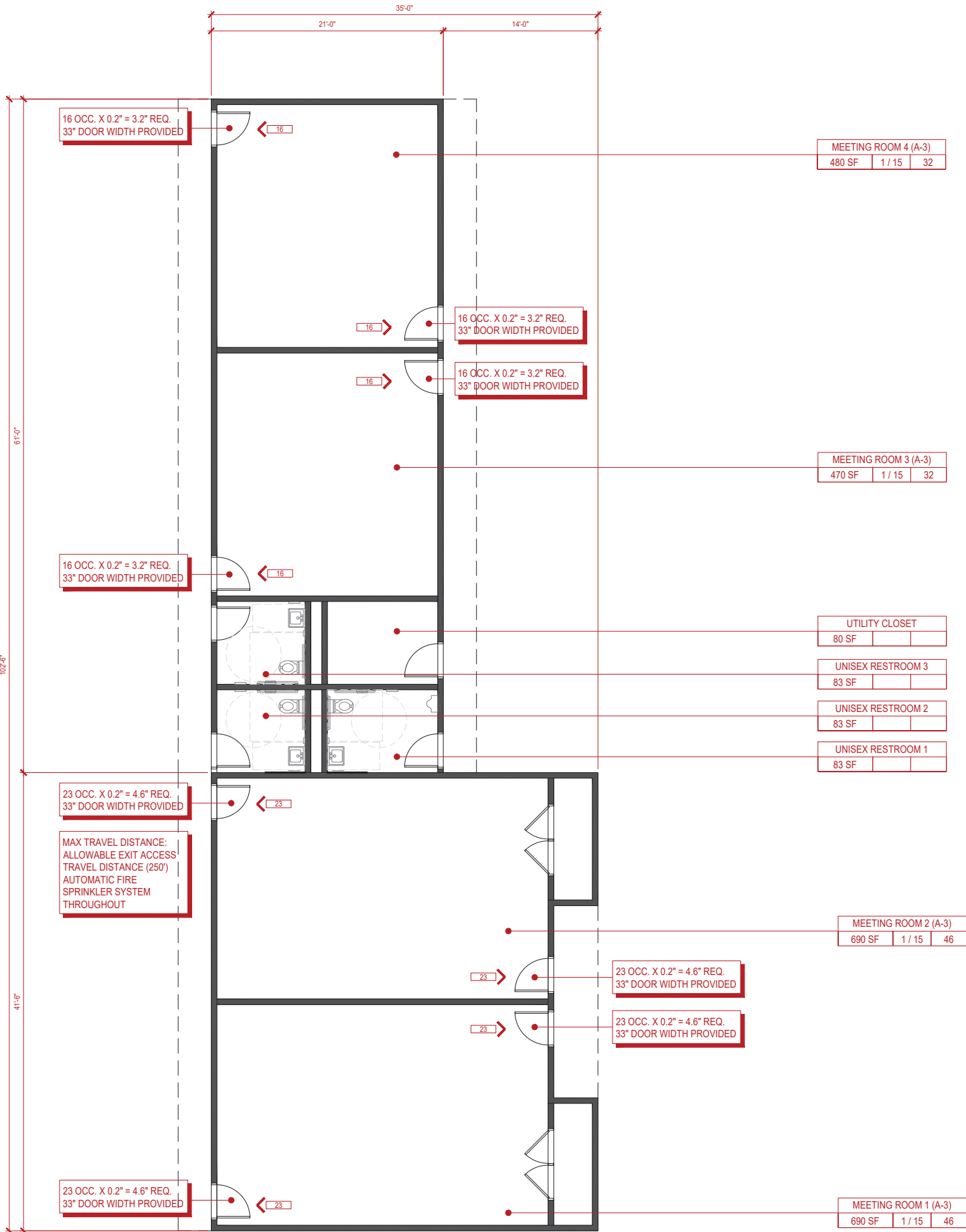


SAIGON REFORMED  
PRESBYTERIAN CHURCH

5321 WEST MCFADDEN AVENUE,  
SANTA ANA, CA 92704

| ISSUANCE |                 |
|----------|-----------------|
| 12.27.22 | ISSUE DP REVIEW |
| 09.15.23 | DP COMMENTS     |
| 04.01.24 | DP COMMENTS 2   |
|          |                 |
|          |                 |
|          |                 |
|          |                 |
|          |                 |
|          |                 |

Designed plans and specifications represented by these drawings are properties of BPDO and were developed for use in connection with each particular project. None of these plans and ideas shall be used, duplicated, disclosed, in part or in whole, without written permission of BPDO.



## CODE ANALYSIS

ALLOWABLE NUMBER OF STORIES - TABLE 504.4 A,B,N

| OCCUPANCY CLASSIFICATION | See Footnotes             | TYPE OF CONSTRUCTION |    |         |   |          |   |         |    |   |        |   |   |
|--------------------------|---------------------------|----------------------|----|---------|---|----------|---|---------|----|---|--------|---|---|
|                          |                           | Type I               |    | Type II |   | Type III |   | Type IV |    |   | Type V |   |   |
|                          |                           | A                    | B  | A       | B | A        | B | A       | B  | C | HT     | A | B |
| A-3                      | NS                        | UL                   | 11 | 3       | 2 | 3        | 2 | 3       | 3  | 3 | 3      | 2 | 1 |
|                          | S (without area increase) | UL                   | 12 | 4       | 3 | 4        | 3 | 18      | 12 | 8 | 4      | 3 | 2 |
|                          | S (with area increase)    | UL                   | 11 | 3       | 2 | 3        | 2 | 17      | 11 | 8 | 3      | 2 | 1 |

ALLOWABLE HEIGHT - TABLE 504.3 A,I

| OCCUPANCY CLASSIFICATION | See Footnotes             | TYPE OF CONSTRUCTION |     |         |    |          |    |         |     |    |        |    |    |
|--------------------------|---------------------------|----------------------|-----|---------|----|----------|----|---------|-----|----|--------|----|----|
|                          |                           | Type I               |     | Type II |    | Type III |    | Type IV |     |    | Type V |    |    |
|                          |                           | A                    | B   | A       | B  | A        | B  | A       | B   | C  | HT     | A  | B  |
| A, E                     | NS                        | UL                   | 160 | 65      | 55 | 65       | 55 | 65      | 65  | 65 | 65     | 50 | 40 |
|                          | S (without area increase) | UL                   | 180 | 85      | 75 | 85       | 75 | 270     | 180 | 85 | 85     | 70 | 60 |
|                          | S (with area increase)    | UL                   | 160 | 65      | 55 | 65       | 55 | 250     | 160 | 65 | 65     | 50 | 40 |

ALLOWABLE AREA DETERMINATION - TABLE 506.2 A, B,J

| OCCUPANCY CLASSIFICATION | SEE FOOTNOTES                   | TYPE OF CONSTRUCTION |        |         |        |          |         |         |        |        |        |        |        |
|--------------------------|---------------------------------|----------------------|--------|---------|--------|----------|---------|---------|--------|--------|--------|--------|--------|
|                          |                                 | Type I               |        | Type II |        | Type III |         | Type IV |        |        | Type V |        |        |
|                          |                                 | A                    | B      | A       | B      | A        | B       | A       | B      | C      | HT     | A      | B      |
| A-3                      | NS                              | UL                   | 15,000 | 5,000   | 14,000 | 4,500    | 45,000  | 30,000  | 18,750 | 15,000 | 11,500 | 6,000  |        |
|                          | S1                              | UL                   | 62,000 | 20,000  | 54,000 | 18,000   | 165,000 | 105,000 | 75,000 | 60,000 | 46,000 | 24,000 | 14,000 |
|                          | S1a (pathwidth height increase) | UL                   | 48,000 | 16,000  | 42,000 | 14,000   | 135,000 | 90,000  | 64,750 | 45,000 | 34,000 | 18,000 | 10,000 |
|                          | S1a (pathwidth height increase) | UL                   | 48,000 | 16,000  | 42,000 | 14,000   | 135,000 | 90,000  | 64,750 | 45,000 | 34,000 | 18,000 | 10,000 |
|                          | S1a (pathwidth height increase) | UL                   | 48,000 | 16,000  | 42,000 | 14,000   | 135,000 | 90,000  | 64,750 | 45,000 | 34,000 | 18,000 | 10,000 |

## EGRESS SUMMARY

|                                    |      |
|------------------------------------|------|
| TOTAL OCCUPANTS                    | 159  |
| EGRESS WIDTH PER PERSON:           | 0.20 |
| REQUIRED EGRESS WIDTH (IN INCHES): | 31.8 |
| ACTUAL EGRESS WIDTH (IN INCHES):   | 264  |
| (8) 36" DOORS AT 33" NET           |      |

## CODE SUMMARY

2022 CALIFORNIA BUILDING CODE  
2022 CALIFORNIA ELECTRICAL CODE  
2022 CALIFORNIA MECHANICAL CODE  
2022 CALIFORNIA PLUMBING CODE  
2022 CALIFORNIA FIRE CODE  
2022 CALIFORNIA ENERGY CODE  
2022 CALIFORNIA CALGREEN CODE  
2022 CITY OF SANTA ANA MUNICIPAL CODE

## AREA TABULATION

|          |              |   |  |                         |
|----------|--------------|---|--|-------------------------|
| LOCATION | MEETING ROOM | REQUIRED EXIT WIDTH                       | 110 OCC. X 0.2" = 22" REQ. 66" DOOR WIDTH PROVIDED | PROVIDED NET DOOR WIDTH |
| AREA     | 350 SF       | OCCUPANT LOAD                             | 1 / 15   24  |                         |
|          |              | OCCUPANT LOAD FACTOR (SQ FT PER OCCUPANT) |  |                         |
|          |              | EXIT SIGN                                 |  |                         |

| LOCATION          | OCCUPANCY | AREA           | OCC FACTOR | OCC LOAD   | COMMENT |
|-------------------|-----------|----------------|------------|------------|---------|
| MEETING ROOM 1    | A-3       | 690 SF         | 1 / 15     | 46         | -       |
| MEETING ROOM 2    | A-3       | 690 SF         | 1 / 15     | 46         | -       |
| MEETING ROOM 3    | A-3       | 470 SF         | 1 / 15     | 32         | -       |
| MEETING ROOM 4    | A-3       | 480 SF         | 1 / 15     | 32         | -       |
| <b>A-3 TOTAL</b>  | -         | <b>2330 SF</b> | -          | <b>156</b> | -       |
| UTILITY CLOSET    | -         | 80 SF          | -          | -          | -       |
| UNISEX RESTROOM 1 | -         | 83 SF          | -          | -          | -       |
| UNISEX RESTROOM 2 | -         | 83 SF          | -          | -          | -       |
| UNISEX RESTROOM 3 | -         | 83 SF          | -          | -          | -       |
| <b>TOTAL</b>      |           | <b>2659 SF</b> | -          | <b>156</b> | -       |

## PLUMBING FIXTURE COUNT

### OCCUPANCY GROUP: A-3 (ASSEMBLY)

AREA: 2659 SF

30 SQ FT PER OCCUPANT = 89 OCCUPANTS;  
45 MEN : 45 WOMEN

| FIXTURE      | REQUIRED                          |                               | REQUIRED |       |
|--------------|-----------------------------------|-------------------------------|----------|-------|
|              | MEN                               | WOMEN                         | MEN      | WOMEN |
| WATER CLOSET | 1:1-100<br>2:101-200<br>3:201-300 | 1:1-25<br>2:26-50<br>3:51-100 | 1        | 2     |
| LAVATORY     |                                   |                               | 1        | 1     |
| URINAL       |                                   |                               | 1        |       |

### TOTAL REQUIRED & PROVIDED

| FIXTURE      | REQUIRED |       | PROVIDED |       |
|--------------|----------|-------|----------|-------|
|              | MEN      | WOMEN | MEN      | WOMEN |
| WATER CLOSET | 1        | 2     | 1        | 2     |
| LAVATORY     | 1        | 1     | 1        | 2     |
| URINAL       | 1        |       | 1        |       |

\*\* TOTAL # REQ'D FOR WOMEN SHALL NOT BE LESS THAN TOTAL  
# WATER CLOSETS + URINALS REQ'D FOR MEN



BAO PHAM DESIGN OFFICE

1310 N. HARBOR BLVD. SANTA ANA, CA 92703 | bpdconnect@gmail.com | 714.457.0436

ARCHITECT OF RECORD:



BAO PHAM

# SAIGON REFORMED PRESBYTERIAN CHURCH

5321 WEST MCFADDEN AVENUE,  
SANTA ANA, CA 92704

## ISSUANCE

|                            |
|----------------------------|
| △ 12.27.22 ISSUE DP REVIEW |
| △ 09.15.23 DP COMMENTS     |
| △ 04.01.24 DP COMMENTS 2   |
| △                          |
| △                          |
| △                          |
| △                          |
| △                          |
| △                          |

Designed plans and specifications represented by these drawings are properties of BPDO and were developed for use in connection with each particular project. None of these plans and ideas shall be used, duplicated, disclosed, in part or in whole, without written permission of BPDO.

PROPOSED  
ASSEMBLY BUILDING  
PLAN & CODE ANALYSIS

A2.1