



Exhibit 1A

SANTA ANA



CITY COUNCIL  
AGENDA DATE:  
SEPTEMBER 17, 2024

PROJECT 22-1802 & 22-1382  
NEWHOPE LIBRARY MODERNIZATION &  
DELHI CENTER LIBRARY BRANCH PROJECT  
LOCATION MAP

















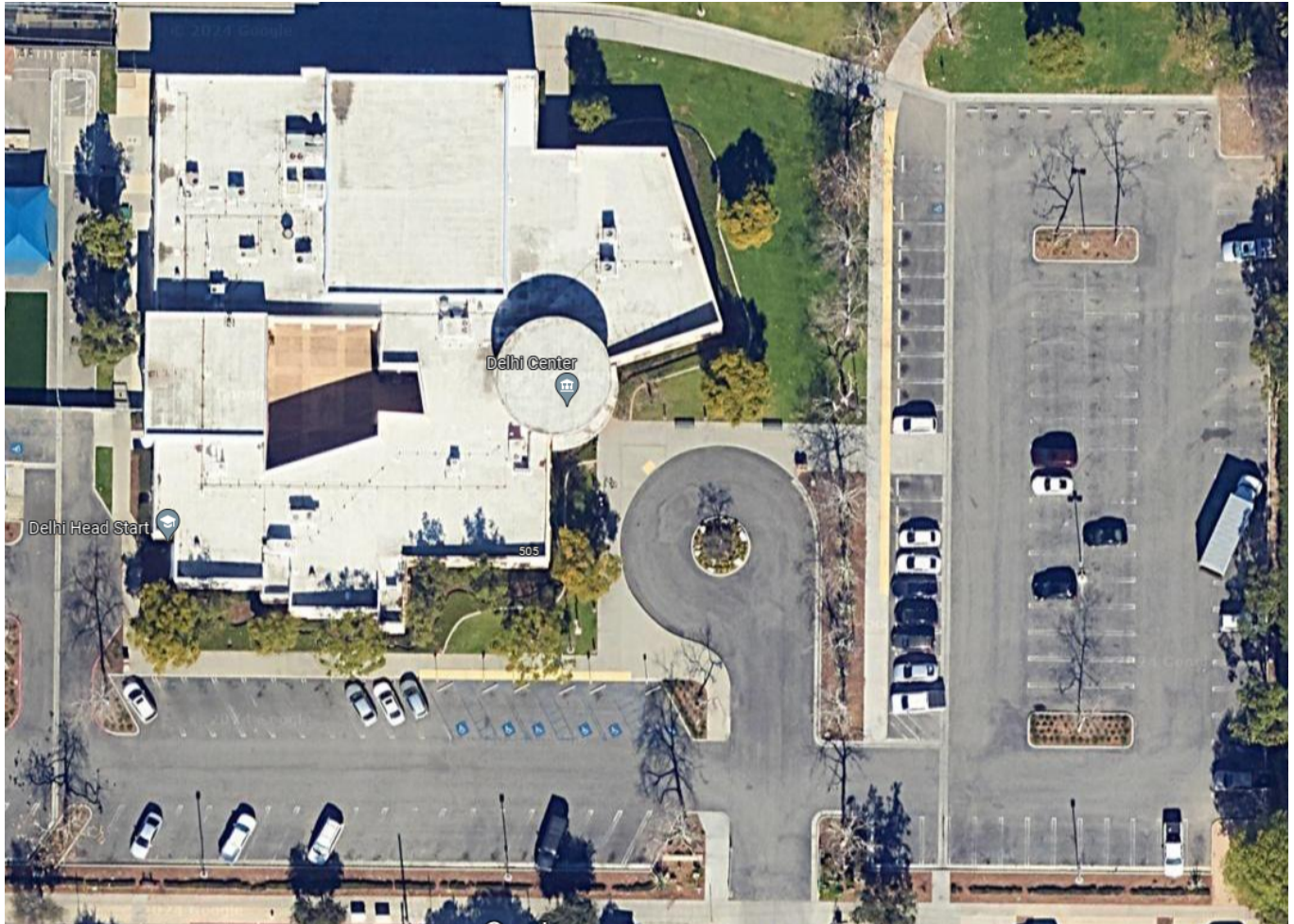


Exhibit 1B

SANTA ANA



CITY COUNCIL  
AGENDA DATE:  
SEPTEMBER 17, 2024

PROJECT 22-1802 & 22-1382  
NEWHOPE LIBRARY MODERNIZATION &  
DELHI CENTER LIBRARY BRANCH PROJECT  
LOCATION MAP



PAGE 2 OF 2

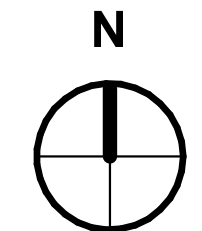


PERSPECTIVE SKETCH









- ## KEYNOTES

PROJECT NO:	#2022-40198
DATE ISSUED:	Issue Date
SCALE:	1/4" = 1'-0"

## IMPROVEMENTS - FURNITURE PLAN

- FLOOR PLAN GENERAL NOTES:**
1. ALL DIMENSIONS ARE TO CENTERLINE OF THE GRID LINES AND/OR TO THE FACE OF STUDS, U.N.O.
  2. UNLESS NOTED OTHERWISE, ALL WALLS ARE FULL HEIGHT.
  3. REFER TO SHEET GEN-4 FOR TYPICAL ACCESSIBILITY REQUIREMENTS AND DIMENSIONS.
  4. REFER TO ENLARGED PLANS FOR DIMENSIONS AND CALLOUTS NOT SHOWN HERE.

6 HUTTON CENTRE DR, SUITE 1150 SANTA ANA, CA 92707  
T 949 809 3380 WWW.SVA-ARCHITECTS.COM

THIS DOCUMENT CONTAINS INFORMATION PROPRIETARY TO SVA ARCHITECTS, INC. AND IS FURNISHED IN CONFIDENCE FOR THE LIMITED PURPOSE OF EVALUATION, BIDDING OR REVIEW. THIS DOCUMENT OR ITS CONTENTS MAY NOT BE USED FOR ANY OTHER PURPOSE AND MAY NOT BE REPRODUCED OR DISCLOSED TO OTHERS WITHOUT THE PRIOR WRITTEN CONSENT OF SVA ARCHITECTS INC. ALL RIGHTS RESERVED. © COPYRIGHT 2018.