

Exhibit 8 - Color and Material Board



BLDG. 700  
SCHEME 2

BLDG. 600  
SCHEME 1

SANTA ANA 8

PRELIMINARY EXTERIOR COLOR/MATERIAL DESIGN

Colors seen on screen and/or printed material may not represent actual colors & textures accurately. Refer to actual materials for color & texture accuracy.



SCHEME 1

**BODY 1**  
SW 7551 GREEK VILLA

**BODY 2**  
SW 2844 ROYCROFT MIST GRAY

**BODY 3**  
SW 2824 RENWICK GOLDEN OAK

**BODY 4**  
SW 7048 URBANE BRONZE

**ACCENT BODY**  
SW 6258 TRICORN BLACK

**GARAGE DOOR & FRENCH DOORS**  
SW 2844 ROYCROFT MIST GRAY

**WINDOWS**  
WHITE

**ENTRY DOORS, AWNINGS, & RAILINGS**  
SW 6258 TRICORN BLACK

**MASONRY**  
ELDORADO STONE: LOREIO BRICK, FAROLA

**ASPHALT SHINGLE ROOF**  
CERTAINTeed: MOIRE

SCHEME 2

**BODY 1**  
SW 7551 GREEK VILLA

**BODY 2**  
SW 7052 GRAY AREA

**BODY 3**  
SW 6207 RETREAT

**BODY 4**  
SW 7048 URBANE BRONZE

**ACCENT BODY**  
SW 6258 TRICORN BLACK

**GARAGE DOOR & FRENCH DOORS**  
SW 7052 GRAY AREA

**WINDOWS**  
WHITE

**ENTRY DOORS, AWNINGS, & RAILINGS**  
SW 6258 TRICORN BLACK

**MASONRY**  
ELDORADO STONE: LOREIO BRICK, FAROLA

**ASPHALT SHINGLE ROOF**  
CERTAINTeed: MOIRE

LIGHT SCONCE



<b>at ENTRY DOORS</b>	
MANUFACTURER:	Visual Comfort
FAMILY:	Testa
PRODUCT SKU:	8757793S-12 LED
FINISH:	Black
LIGHT:	LED
WIDTH:	7"
HEIGHT:	20"
EXTENDS:	4.5"



<b>at GARAGE DOORS &amp; DECKS</b>	
MANUFACTURER:	Visual Comfort
FAMILY:	Testa
PRODUCT SKU:	8657793S-12 LED
FINISH:	Black
LIGHT:	LED
WIDTH:	5.75"
HEIGHT:	16"
EXTENDS:	3.5"

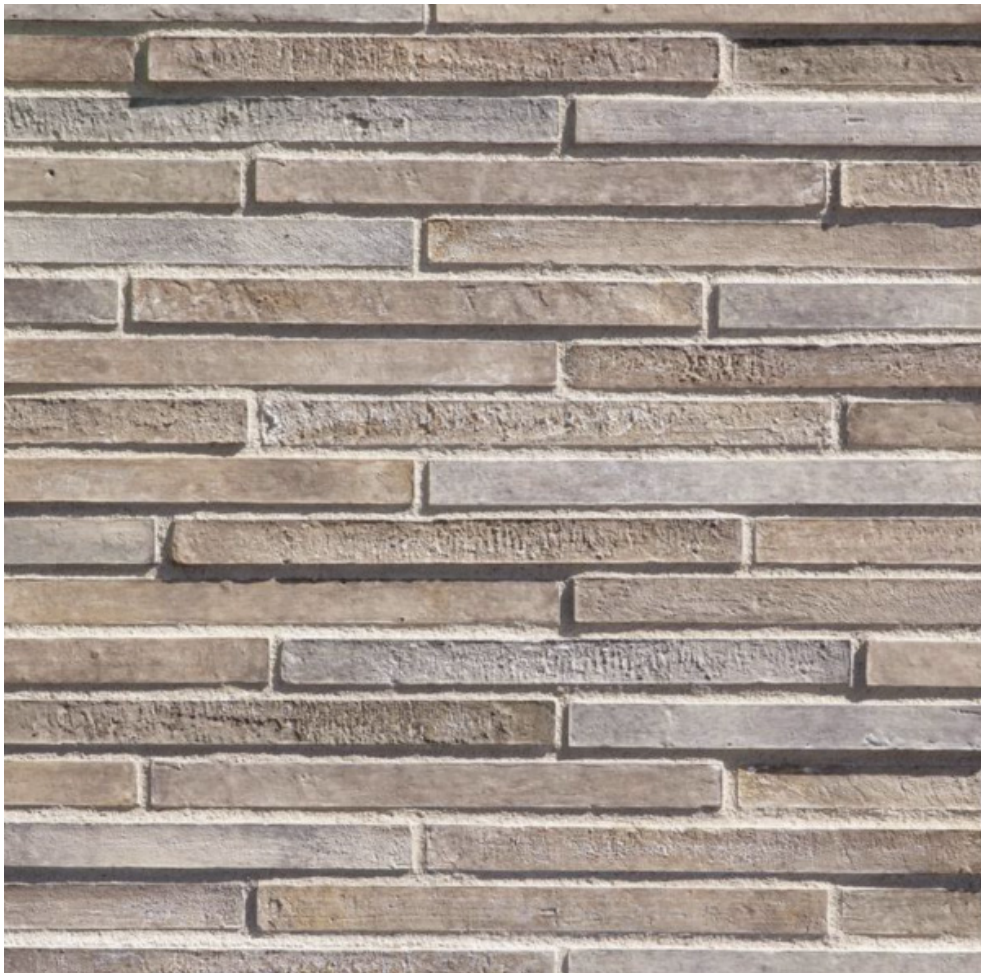
TITLE 24 LAMP REQUIREMENT  
Light fixtures with screw-in lamp must have lamps with certification by the Energy Commission as meeting the requirements of Reference Joint Appendix JA8 per the Lighting Title 24 mandatory measures. The lamp must be marked with "JA8-2022" or "JA8-2022-E" in order to be used with the fixture.

ADDRESS NUMBERS

0123456789

MANUFACTURER:	Modern House Numbers
TYPE FACE:	Palm Springs
MATERIAL:	Brushed Aluminum
FORMAT ORIENTATION:	Intallation Orientation per Client
NUMBER HEIGHT:	4" (Client to verify with City)
STANDOFF:	1/2"
COLOR:	Brushed Aluminum





**Bonding Surface:** All surfaces must be clean, free of any dirt, loose debris to create an even and flat surface for stone installation.

**Lay-Up:** Lay-up masonry in a horizontal orientation with 30%-70% stagger.

**Mortar Joints:** Vertical and horizontal joints to be 3/16". Mortar should be sponged.

**Mortar:** Mortar should be used for levelling and adhering and should be level with face and edge of masonry with some shadowing effect.

**Masonry Face & Edge Detail:** Masonry face and edge detail must remain clean, not mortar washed or sponged. DO NOT cover masonry face and edge with mortar.

Sample image on left is for field stone lay-up style reference only. For stone color refer to specifications.