

Inspiration. Innovation. Integration.

Applications Department
app@scilights.com
phone: (949) 622-3000
fax: (949) 622-3095
<https://www.scilights.com/>

Photometry Disclaimer:

- Light loss factor (LLF) has been established at 0.95 per industry IES standard.
- Refer to Calculation summary for placement of calculation points, I.E.: Workplane, Floor.
- Offices, conference rooms, and open work areas are calculated at 2.5' from A.F.F. All other areas will be calculated at floor or at the direction of the client.
- Reflectance levels are per SCI Standard.
- Ceiling at 0.80, Floor at 0.10, Walls at 0.50 and Objects at 0.50 unless specified by client.

Controls Disclaimer:

- This device diagram is provided using industry recognized software and are provided for estimation purposes only. Input data for the calculations corresponds to the information provided to us (assumptions may be made for information that is not provided). It is the responsibility of those using this service to verify that our input data is consistent with expected field conditions. Results of the lighting calculations accurately reflect the input data. However, actual lighting levels will vary depending on field conditions such as Calculations are also subject to the limitations of the software. Due to the above considerations, Southern California Illumination cannot guarantee that actual light levels measured in the field will match our initial calculations.

NOTE: Fluorescent fixtures will require a compatible - SCI Controls System is based on CA-2022 T24 code and might supersede end user requirements.

Calculations are provided using industry recognized software and are provided for estimation purposes only. Input data for the calculations corresponds to the information provided to us (assumptions may be made for information that is not provided). It is the responsibility of those using this service to verify that our input data is consistent with expected field conditions. Results of the lighting calculations accurately reflect the input data. However, actual lighting levels will vary depending on field conditions such as Calculations are also subject to the limitations of the software. Due to the above considerations, Southern California Illumination cannot guarantee that actual light levels measured in the field will match our initial calculations.

Architects Orange

Footlab Site Calcs R4

Exigent # 24-5062

Footlab Orange County Santa Ana

Drawn By: AP4 Date: 01/28/2025

Revision #: Scale: 1" = 20' - 0"

Notes:

F
E
D
C
B
A

1 2 3 4 5 6 7 8



COOPER
Lighting Solutions



ephesus
SPORTS LIGHTING

PHOTOMETRIC DRAWINGS FOR:

**Footlab - Outdoor
Santa Ana, CA**

Project #: 2400953
January 21, 2025

Prepared By:

EPHESUS SPORTS LIGHTING
125 E JEFFERSON ST
SYRACUSE NY 13202
315-579-2873

ephesus
125 EAST JEFFERSON STREET
SYRACUSE, NEW YORK 13202
PHONE: 315-579-2873
WWW.EPHESUSLIGHTING.COM

LIGHTING DESIGN FOR:

Footlab - Outdoor
Santa Ana, CA
LS8 680N and Lumavision

MH: 20 and 50 ft
Reflectances: .2/.2/.2
LLF: 0.92
Calc Grid: 10 x 10
Notes:

DRAWN
C Yohe

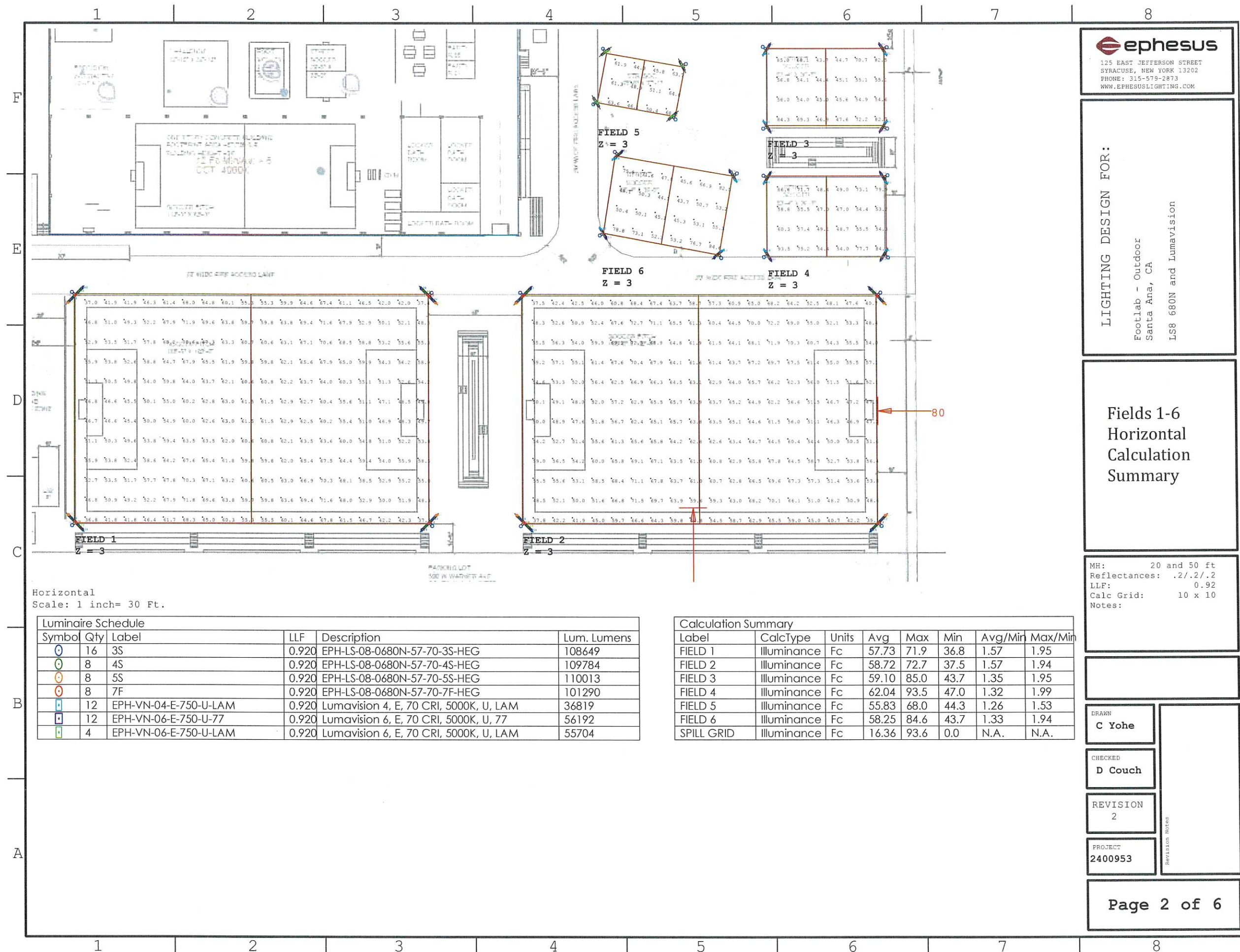
CHECKED
D Couch

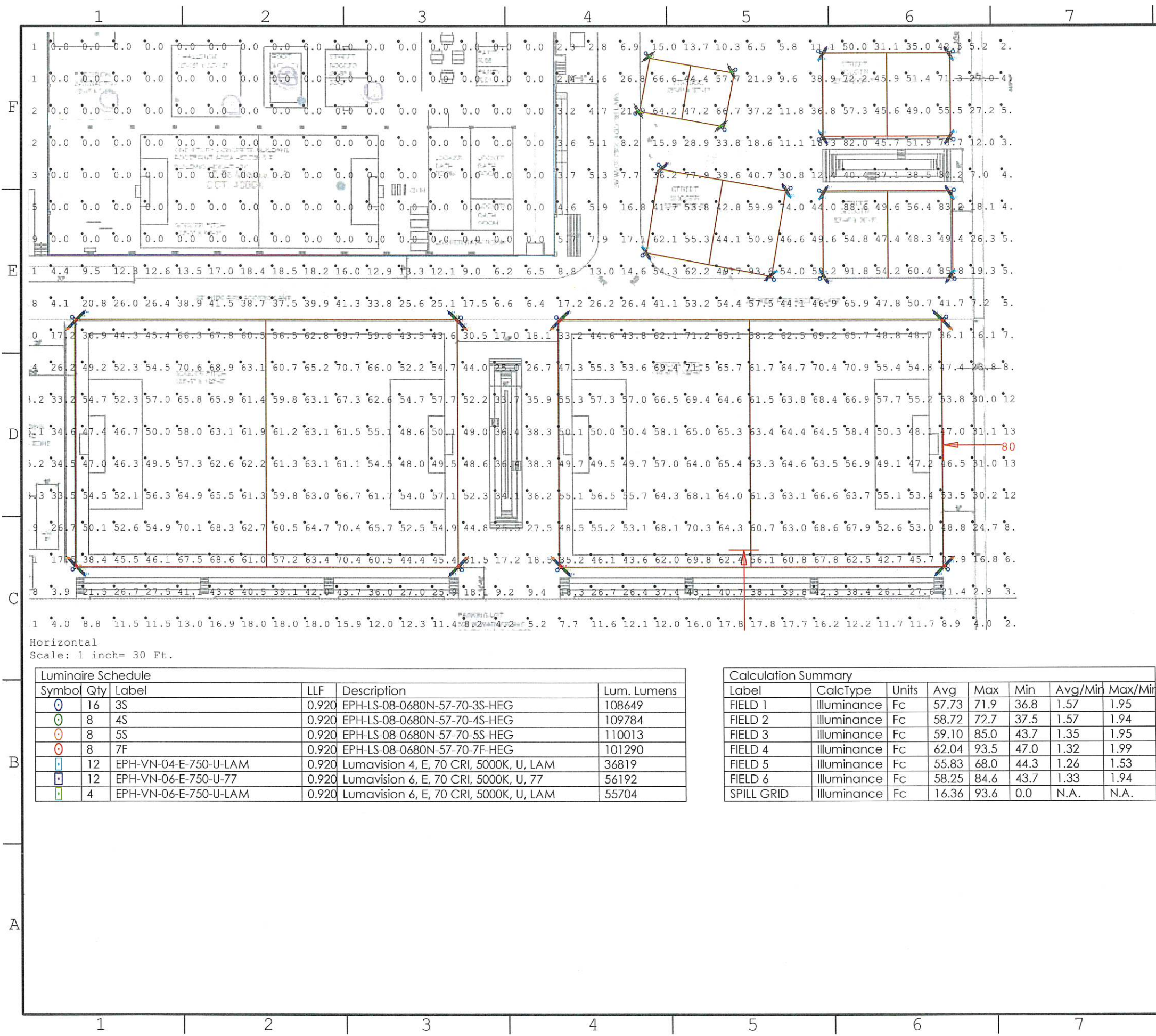
REVISION
2

PROJECT
2400953

Revision Notes

1 2 3 4 5 6 7 8





ephesus
125 EAST JEFFERSON STREET
SYRACUSE, NEW YORK 13202
PHONE: 315-579-2873
WWW.EPHESUSLIGHTING.COM

LIGHTING DESIGN FOR:

Footlab - Outdoor
Santa Ana, CA

LS8 680N and Lumavision

Overall
Horizontal
Calculation
Summary

MH: 20 and 50 ft
Reflectances: .2/.2/.2
LLF: 0.92
Calc Grid: 10 x 10
Notes:

Luminaire Schedule				
Symbol	Qty	Label	LLF	Description
⊙	16	3S	0.920	EPH-LS-08-0680N-57-70-3S-HEG
⊙	8	4S	0.920	EPH-LS-08-0680N-57-70-4S-HEG
⊙	8	5S	0.920	EPH-LS-08-0680N-57-70-5S-HEG
⊙	8	7F	0.920	EPH-LS-08-0680N-57-70-7F-HEG
⊙	12	EPH-VN-04-E-750-U-LAM	0.920	Lumavision 4, E, 70 CRI, 5000K, U, LAM
⊙	12	EPH-VN-06-E-750-U-77	0.920	Lumavision 6, E, 70 CRI, 5000K, U, 77
⊙	4	EPH-VN-06-E-750-U-LAM	0.920	Lumavision 6, E, 70 CRI, 5000K, U, LAM

Calculation Summary							
Label	CalcType	Units	Avg	Max	Min	Avg/Min	Max/Min
FIELD 1	Illuminance	Fc	57.73	71.9	36.8	1.57	1.95
FIELD 2	Illuminance	Fc	58.72	72.7	37.5	1.57	1.94
FIELD 3	Illuminance	Fc	59.10	85.0	43.7	1.35	1.95
FIELD 4	Illuminance	Fc	62.04	93.5	47.0	1.32	1.99
FIELD 5	Illuminance	Fc	55.83	68.0	44.3	1.26	1.53
FIELD 6	Illuminance	Fc	58.25	84.6	43.7	1.33	1.94
SPILL GRID	Illuminance	Fc	16.36	93.6	0.0	N.A.	N.A.

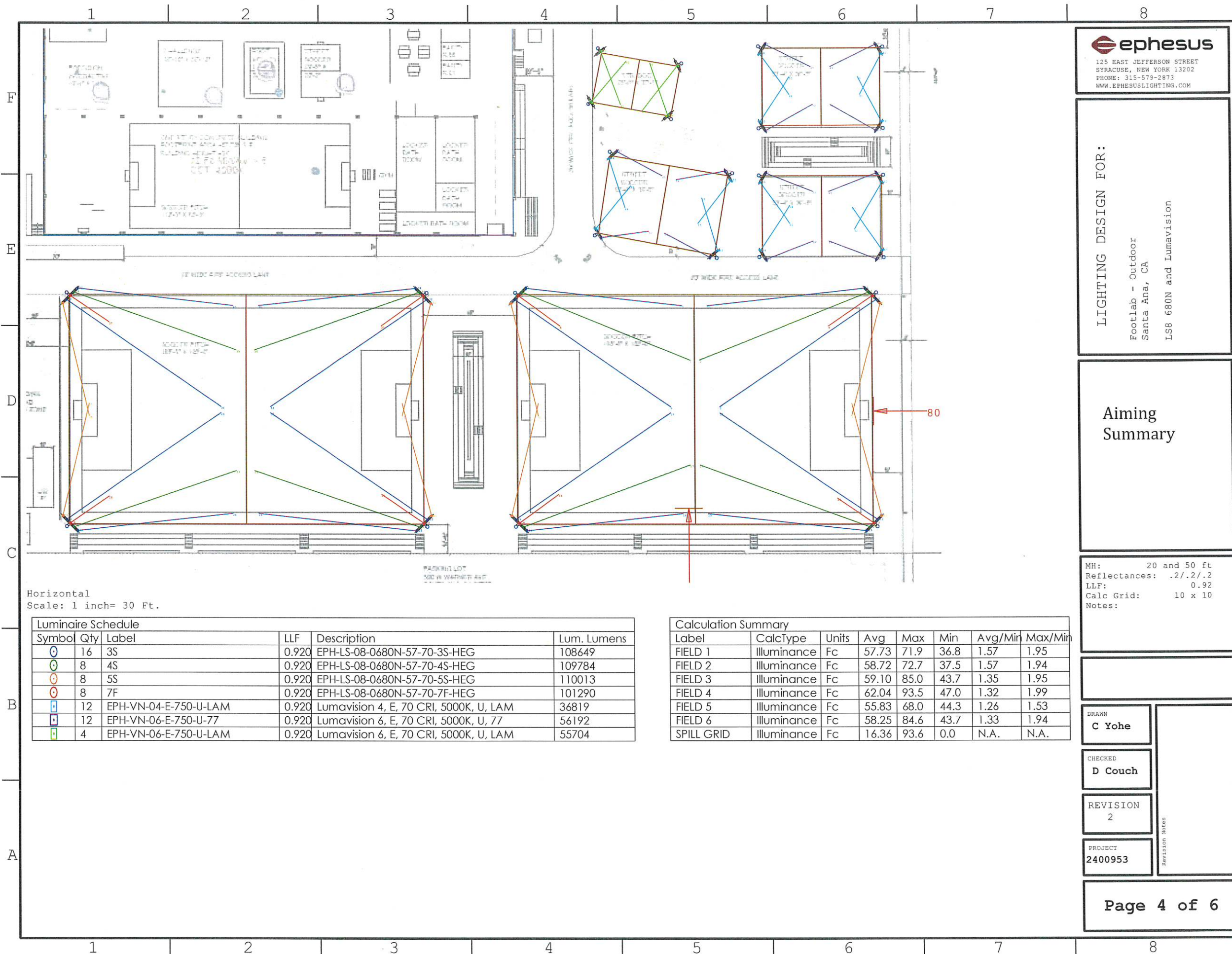
DRAWN
C Yohe

CHECKED
D Couch

REVISION
2

PROJECT
2400953

Revision Notes



Horizontal
Scale: 1 inch= 30 Ft.

Luminaire Schedule				
Symbol	Qty	Label	LLF	Description
⊙	16	3S	0.920	EPH-LS-08-0680N-57-70-3S-HEG
⊙	8	4S	0.920	EPH-LS-08-0680N-57-70-4S-HEG
⊙	8	5S	0.920	EPH-LS-08-0680N-57-70-5S-HEG
⊙	8	7F	0.920	EPH-LS-08-0680N-57-70-7F-HEG
⊙	12	EPH-VN-04-E-750-U-LAM	0.920	Lumavision 4, E, 70 CRI, 5000K, U, LAM
⊙	12	EPH-VN-06-E-750-U-77	0.920	Lumavision 6, E, 70 CRI, 5000K, U, 77
⊙	4	EPH-VN-06-E-750-U-LAM	0.920	Lumavision 6, E, 70 CRI, 5000K, U, LAM
Lum. Lumens				

Calculation Summary							
Label	CalcType	Units	Avg	Max	Min	Avg/Min	Max/Min
FIELD 1	Illuminance	Fc	57.73	71.9	36.8	1.57	1.95
FIELD 2	Illuminance	Fc	58.72	72.7	37.5	1.57	1.94
FIELD 3	Illuminance	Fc	59.10	85.0	43.7	1.35	1.95
FIELD 4	Illuminance	Fc	62.04	93.5	47.0	1.32	1.99
FIELD 5	Illuminance	Fc	55.83	68.0	44.3	1.26	1.53
FIELD 6	Illuminance	Fc	58.25	84.6	43.7	1.33	1.94
SPILL GRID	Illuminance	Fc	16.36	93.6	0.0	N.A.	N.A.

125 EAST JEFFERSON STREET
SYRACUSE, NEW YORK 13202
PHONE: 315-579-2873
WWW.EPHESUSLIGHTING.COM

LIGHTING DESIGN FOR:

Footlab - Outdoor
Santa Ana, CA
LS8 680N and Lumavision

Aiming
Summary

MH: 20 and 50 ft
Reflectances: .2/.2/.2
LLF: 0.92
Calc Grid: 10 x 10
Notes:

DRAWN
C Yohe

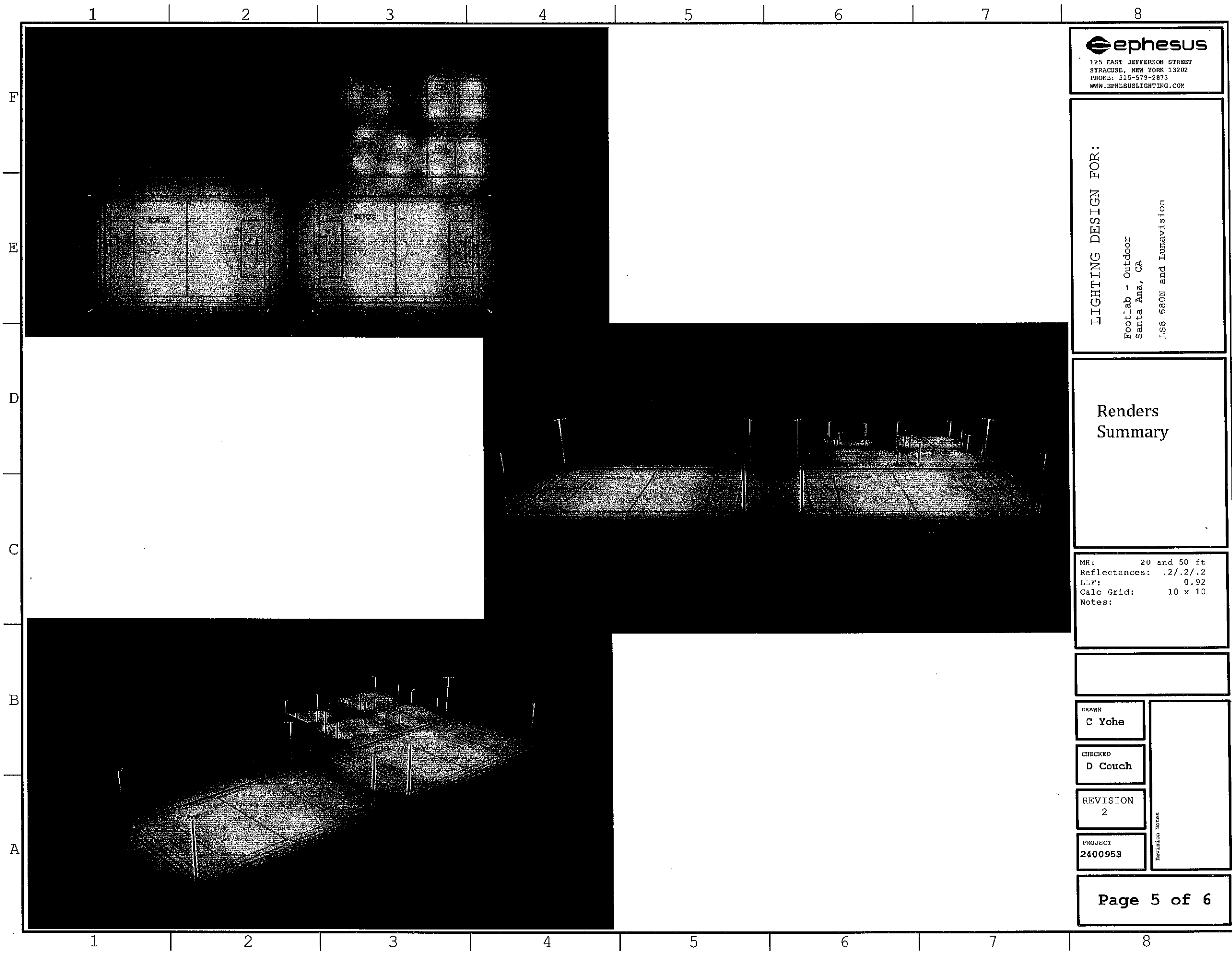
CHECKED
D Couch

REVISION
2

PROJECT
2400953

Revision Notes

Page 4 of 6



ephesus
125 EAST JEFFERSON STREET
SYRACUSE, NEW YORK 13202
PHONE: 315-579-2873
WWW.EPHESUSLIGHTING.COM

LIGHTING DESIGN FOR:

Footlab - Outdoor
Santa Ana, CA
LS8 680N and Lumavision

**Renders
Summary**

MH: 20 and 50 ft
Reflectances: .2/.2/.2
LLF: 0.92
Calc Grid: 10 x 10
Notes:

DRAWN
C Yohe

CHECKED
D Couch

REVISION
2

PROJECT
2400953

Revision Notes

