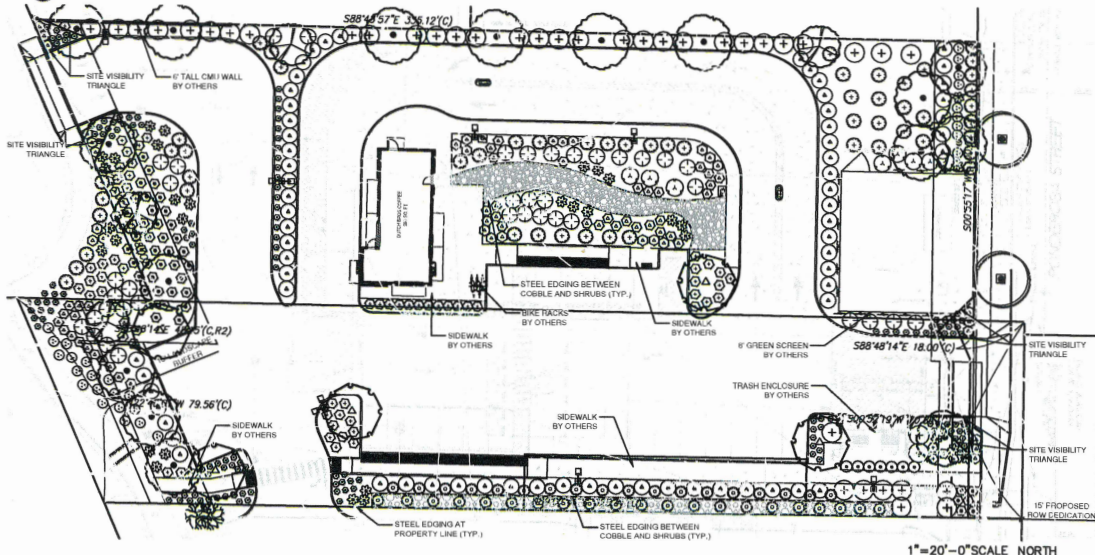




Know what's below.
Call before you dig.
Dial 811

DUTCH BROS. COFFEE - CA4408 - SANTA ANA, CA



PROJECT TEAM

LANDSCAPE ARCHITECT
EVERGREEN DESIGN GROUP
17875 VON KARMAN, STE 150
IRVINE, CA 92614
949-860-6630
WWW.EVERGREENDESIGNGROUP.COM
CONTACT: BLAKE TOMILLOSO-RHINEHART, P.L.A.
EMAIL: BLAKE@EVERGREENDESIGNGROUP.COM

MULCHES

AFTER ALL PLANTING IS COMPLETE, CONTRACTOR SHALL INSTALL 3" THICK LAYER OF 1-1/2" SHREDDED WOOD MULCH, RECYCLED, NATURAL (UNDYED), OVER LANDSCAPE FABRIC IN ALL PLANTING AREAS EXCEPT FOR TURF AND SEED AREAS. CONTRACTOR SHALL SUBMIT SAMPLES OF ALL MULCHES TO LANDSCAPE ARCHITECT AND OWNER FOR APPROVAL PRIOR TO CONSTRUCTION. ABSOLUTELY NO EXPOSED GROUND SHALL BE LEFT SHOWING ANYWHERE ON THE PROJECT AFTER MULCH HAS BEEN INSTALLED (SUBJECT TO THE CONDITIONS AND REQUIREMENTS OF THE "GENERAL GRADING AND PLANTING NOTES" AND SPECIFICATIONS).

ROOT BARRIERS

THE CONTRACTOR SHALL INSTALL ROOT BARRIERS NEAR ALL NEWLY PLANTED TREES THAT ARE LOCATED WITHIN FIVE (5) FEET OF PAVING OR CURBS. ROOT BARRIERS SHALL BE "CENTURY" OR "DEEP-ROOT" 24" DEEP PANELS (OR EQUIV.). BARRIERS SHALL BE LOCATED IMMEDIATELY ADJACENT TO HARDSCAPE. INSTALL PANELS PER MANUFACTURER'S RECOMMENDATIONS. UNDER NO CIRCUMSTANCES SHALL THE CONTRACTOR USE ROOT BARRIERS OF A TYPE THAT COMPLETELY ENCIRCLE THE ROOTBALL.

SOILS NOTE

FOR SOILS LESS THAN 6% ORGANIC MATTER IN THE TOP 6 INCHES OF SOIL, COMPOST AT A RATE OF A MINIMUM OF FOUR CUBIC YARDS PER 1000 SQUARE FEET OF PERMEABLE AREA SHALL BE INCORPORATED TO A DEPTH OF 6 INCHES INTO THE SOIL EXCEPT WITHIN THE TYP. OF PROTECTED TREES, WHICH SHALL RECEIVE 4" OF HARDWOOD CHIP MULCH.

DECLARATION OF WATER EFFICIENT LANDSCAPE ORDINANCE

I HAVE COMPLIED WITH THE CRITERIA OF THE WATER EFFICIENT LANDSCAPE ORDINANCE AND APPLIED SUCH CRITERIA FOR THE EFFICIENT USE OF WATER IN THE LANDSCAPE DESIGN PLAN.

BLAKE TOMILLOSO-RHINEHART, LANDSCAPE ARCHITECT
CA LICENSE #2655
REGISTRATION
2.12.2025
DATE
8-31-26
EXP. DATE

MVLEO NOTES

- A DIAGRAM OF THE IRRIGATION PLAN SHOWING HYDROZONES SHALL BE KEPT WITH THE IRRIGATION CONTROLLER FOR SUBSEQUENT MANAGEMENT PURPOSES.
- A CERTIFICATE OF COMPLETION SHALL BE FILLED OUT AND CERTIFIED BY EITHER THE DESIGNER OF THE LANDSCAPE PLANS, IRRIGATION PLANS, OR THE LICENSED LANDSCAPE CONTRACTOR FOR THE PROJECT.
- AN IRRIGATION ADJUST REPORT BY A DISINTERESTED THIRD PARTY SHALL BE COMPLETED AT THE TIME OF FINAL INSPECTION.
- THE CONTRACTOR MUST PREPARE A SOIL MANAGEMENT REPORT. THE SOIL MANAGEMENT REPORT SHALL BE BOTH INTEGRATED INTO THE PLANS AND SUBMITTED AS A SEPARATE DOCUMENT.
- PRESSURE REGULATING DEVICES ARE REQUIRED IF WATER PRESSURE IS BELOW OR EXCEEDS THE RECOMMENDED PRESSURE OF THE SPECIFIED IRRIGATION DEVICES.
- CHECK VALVES OR ANTI-SUCK BACK VALVES ARE REQUIRED ON ALL SPRINKLER HEADS WHERE LOW POINT DRAINAGE COULD OCCUR.

LANDSCAPE CALCULATIONS

GENERAL CALCULATIONS LANDSCAPE AREA PROVIDED:	20,829 SF
WEST BUFFER	
TREES REQUIRED	188-10" T (15 WOTH)
TREES PROVIDED	8 TREES (1 PER 25 LF)
SHRUBS REQUIRED	180 NO. (78) 10 SHRUBS (3) 50" + (16) 10 PER 25 LF
SHRUBS PROVIDED	18 EXCESS DUE TO REQUEST FOR ENHANCED LANDSCAPING
EAST BUFFER	
TREES REQUIRED	171-11" T (15 WOTH)
TREES PROVIDED	7 TREES (1 PER 25 LF)
SHRUBS REQUIRED	271 NO. (78) 10 SHRUBS (3) 50" + (16) 10 PER 25 LF
SHRUBS PROVIDED	18 EXCESS DUE TO REQUEST FOR ENHANCED LANDSCAPING
PARKING LOT/LANDSCAPE	
PLANTER ISLANDS	5 ISLANDS
TREES REQUIRED	5 TREES (1 PER ISLAND)
TREES PROVIDED	5 TREES
SHRUBS REQUIRED	55 SHRUBS (11 PER ISLAND)
SHRUBS PROVIDED	55 SHRUBS

PLANT SCHEDULE

SYMBOL	BOTANICAL / COMMON NAME	SIZE	WUCOLS	CAL	HEIGHT	QTY
TREES						
	CERCIS OCCIDENTALIS	24" BOX	L	2.5" CAL, 3-6 CANES	6'-8'	4
	VELUTERNA REDBUD MULTI-TRUNK	24" BOX	L	2" CAL	8'-10'	16
	GEUM PARVIFLORA	24" BOX	M	2" CAL	8'-10'	2
	AUSTRALIAN WILLOW	24" BOX	M	2" CAL	8'-10'	2
	LOPHOSTEMON CONFERTUS	15 GAL	M	1.5" CAL	6'-8'	5
	BRISBANE BOX					
	PISTACHIA CHINENSIS					
	CHINESE PISTACHE					

SYMBOL	BOTANICAL / COMMON NAME	SIZE	WUCOLS	MATURE SIZE (WxH)	ADDITIONAL	SPACING	QTY
SHRUBS							
	AGAVE ATTENUATA	5 GAL	L			48" o.c.	32
	PISTACHIA	5 GAL	L			72" o.c.	8
	ARCTOSTAPHYLOS DENSIFLORA 'HOWARD MCINN	1 GAL	L			60" o.c.	54
	HOWARD MCINN VINE HILL MANZANITA	5 GAL	L			48" o.c.	36
	BOUCARVILLEA X MONIKA	5 GAL	L			48" o.c.	23
	DOUGLASS BOUTANVILLEA	5 GAL	L			42" o.c.	66
	CLEMATIS LIGUSTICIFOLIA	1 GAL	L			24" o.c.	143
	VELUTERNA WHITE CLEMATIS	1 GAL	L				
	DANIELLA REVOLUTA 'BIG REY	5 GAL	L			84" o.c.	40
	BIG REY FLAX LILY	5 GAL	L			42" o.c.	43
	DANIELLA REVOLUTA VARIEGATED	1 GAL	L			42" o.c.	47
	VARIEGATED FLAX LILY	1 GAL	L			42" o.c.	26
	HETEROMELES ARBUTIFOLIA 'DAVIS GOLD'	5 GAL	L			60" o.c.	36
	DAVIS GOLD TOYON	5 GAL	L			42" o.c.	43
	LEYMUS CONDESBATUS 'CANYON PRINCE'	1 GAL	L			42" o.c.	47
	CANYON PRINCE GIANT VELD RYE	1 GAL	L			42" o.c.	26
	MULLENBERGIA CAPILLARIS	5 GAL	L			60" o.c.	36
	PINK BUNCH GRASS	1 GAL	L			60" o.c.	36
	MULLENBERGIA DUBIA	5 GAL	L			60" o.c.	36
	PINK BUNCH	1 GAL	L			60" o.c.	36
	MULLENBERGIA RIGENS	5 GAL	L			60" o.c.	36
	DEER GRASS	5 GAL	L			60" o.c.	36
	OLIA EUROPAEA MONTRA	5 GAL	L			60" o.c.	36
	LITTLE OLIVE	5 GAL	L			60" o.c.	36
	HYPOCHOERIS TENEBRULUM 'SILVER SHEEP'	5 GAL	M			48" o.c.	7
	SILVER SHEEP TWAINHILL	1 GAL	L			48" o.c.	30
	SENEDIO MANDARINISCAE 'BLUE CHALK STICKS'						
	SENEDIO						

GROUND COVERS

	CANYON CREEK COBBLE	940 SF
	2" OVER FABRIC	671 SF
	SANTA BARBARA COBBLE	
	6" OVER FABRIC	

GENERAL GRADING AND PLANTING NOTES

- BY SUBMITTING A PROPOSAL FOR THE LANDSCAPE PLANTING SCOPE OF WORK, THE CONTRACTOR CONFIRMS THAT HE HAS READ, AND WILL COMPLY WITH, THE ASSOCIATED NOTES, SPECIFICATIONS, AND DETAILS WITH THIS PROJECT.
- THE GENERAL CONTRACTOR IS RESPONSIBLE FOR REMOVING ALL EXISTING VEGETATION (EXCEPT WHERE NOTED TO REMAIN).
- IN THE CONTEXT OF THESE PLANS, NOTES, AND SPECIFICATIONS, "FINISH GRADE" REFERS TO THE FINAL ELEVATION OF THE SOIL SURFACE (NOT TOP OF MULCH) AS INDICATED ON THE GRADING PLANS.
- BEFORE STARTING WORK, THE LANDSCAPE CONTRACTOR SHALL VERIFY THAT THE ROUGH GRADES OF ALL LANDSCAPE AREAS ARE WITHIN +0.1' OF FINISH GRADE. SEE SPECIFICATIONS FOR MORE DETAILED INSTRUCTION ON TURF AREA AND PLANTING BED PREPARATION.
- CONSTRUCT AND MAINTAIN FINISH GRADES AS SHOWN ON GRADING PLANS, AND CONSTRUCT AND MAINTAIN SLOPES AS RECOMMENDED BY THE GEOTECHNICAL REPORT. ALL LANDSCAPE AREAS SHALL HAVE POSITIVE DRAINAGE AWAY FROM STRUCTURES AT THE MINIMUM SLOPE SPECIFIED IN THE REPORT AND ON THE GRADING PLANS, AND AREAS OF POTENTIAL FLOODING SHALL BE REGRADED TO BLEND IN WITH THE SURROUNDING GRADES AND ELIMINATE FLOODING POTENTIAL.
- THE LANDSCAPE CONTRACTOR SHALL DETERMINE WHETHER OR NOT THE EXPORT OF ANY SOIL WILL BE NEEDED, TAKING INTO ACCOUNT THE ROUGH GRADE PROVIDED, THE AMOUNT OF SOIL AMENDMENTS TO BE ADDED (BASED ON A SOIL TEST, PER SPECIFICATIONS), AND THE FINISH GRADES TO BE ESTABLISHED.
- ENSURE THAT THE FINISH GRADE IN SHRUB AREAS IMMEDIATELY ADJACENT TO WALKS AND OTHER PAVING SURFACES, AFTER INSTALLING SOIL AMENDMENTS, IS 3" BELOW THE ADJACENT FINISH SURFACE, IN ORDER TO ALLOW FOR PROPER MULCH DEPTH. TAPER THE SOIL SURFACE TO MEET FINISH GRADE, AS SPECIFIED ON THE GRADING PLANS, AT APPROXIMATELY 18" AWAY FROM THE WALKS.
- ENSURE THAT THE FINISH GRADE IN TURF AREAS IMMEDIATELY ADJACENT TO WALKS AND OTHER PAVING SURFACES, AFTER INSTALLING SOIL AMENDMENTS, IS 1" BELOW THE FINISH SURFACE OF THE WALKS, TAPER THE SOIL SURFACE TO MEET FINISH GRADE, AS SPECIFIED ON THE GRADING PLANS, AT APPROXIMATELY 18" AWAY FROM THE WALKS.
- SHOULD ANY CONFLICTS AND/OR DISCREPANCIES ARISE BETWEEN THE GRADING PLANS, GEOTECHNICAL REPORT, THESE NOTES AND PLANS, AND ACTUAL CONDITIONS, THE CONTRACTOR SHALL IMMEDIATELY BRING SUCH ITEMS TO THE ATTENTION OF THE LANDSCAPE ARCHITECT, GENERAL CONTRACTOR, AND OWNER.
- ALL PLANT LOCATIONS ARE DIAGRAMMATIC. ACTUAL LOCATIONS SHALL BE VERIFIED WITH THE LANDSCAPE ARCHITECT OR DESIGNER PRIOR TO PLANTING. THE LANDSCAPE CONTRACTOR SHALL ENSURE THAT ALL REQUIREMENTS OF THE PERMITTING AUTHORITY ARE MET (E.G., MINIMUM PLANT QUANTITIES, PLANTING METHODS, TREE PROTECTION METHODS, ETC.).
- THE LANDSCAPE CONTRACTOR IS RESPONSIBLE FOR DETERMINING PLANT QUANTITIES. PLANT QUANTITIES SHOWN ON LEGENDS AND CALLOUTS ARE FOR GENERAL INFORMATION ONLY. IN THE EVENT OF A DISCREPANCY BETWEEN THE PLAN AND THE PLANT LEGEND, THE PLANT QUANTITY AS SHOWN ON THE PLAN FOR INDIVIDUAL SYMBOLS OR CALLOUT FOR GROUNDCOVER PATTERNING SHALL TAKE PRECEDENCE.
- NO SUBSTITUTIONS OF PLANT MATERIALS SHALL BE ALLOWED WITHOUT THE WRITTEN PERMISSION OF THE LANDSCAPE ARCHITECT. IF SOME OF THE PLANTS ARE NOT AVAILABLE, THE LANDSCAPE CONTRACTOR SHALL NOTIFY THE LANDSCAPE ARCHITECT BY WRITING (OR PROPER CHANNELS).
- THE CONTRACTOR SHALL, AT A MINIMUM, PROVIDE REPRESENTATIVE PHOTOS OF ALL PLANTS PROPOSED FOR THE PROJECT. THE CONTRACTOR SHALL ALLOW THE LANDSCAPE ARCHITECT AND THE OWNER'S REPRESENTATIVE TO INSPECT, AND APPROVE OR REJECT, ALL PLANTS DELIVERED TO THE JOBSITE. REFER TO SPECIFICATIONS FOR ADDITIONAL REQUIREMENTS FOR SUBMITTALS.
- THE CONTRACTOR SHALL MAINTAIN THE LANDSCAPE IN A HEALTHY CONDITION FOR 90 DAYS AFTER ACCEPTANCE BY THE OWNER. REFER TO SPECIFICATIONS FOR CONDITIONS OF ACCEPTANCE FOR THE START OF THE MAINTENANCE PERIOD, AND FOR FINAL ACCEPTANCE AT THE END OF THE MAINTENANCE PERIOD.
- SEE SPECIFICATIONS AND DETAILS FOR FURTHER REQUIREMENTS.

IRRIGATION CONCEPT

- AN AUTOMATIC IRRIGATION SYSTEM SHALL BE INSTALLED AND OPERATIONAL BY THE TIME OF FINAL INSPECTION. THE ENTIRE IRRIGATION SYSTEM SHALL BE INSTALLED BY A LICENSED AND QUALIFIED IRRIGATION CONTRACTOR.
- THE IRRIGATION SYSTEM WILL OPERATE ON POTABLE WATER, AND THE SYSTEM WILL HAVE APPROPRIATE BACKFLOW PREVENTION DEVICES INSTALLED TO PREVENT CONTAMINATION OF THE POTABLE SUPPLY.
- ALL NON-TURF PLANTED AREAS SHALL BE Drip IRRIGATED. SODDED AND SEEDING AREAS SHALL BE IRRIGATED WITH SPRAY OR ROTOR HEADS AT 100% HEAD-TO-HEAD COVERAGE.
- ALL PLANTS HAVING SENSITIVE HYDROZONE CHARACTERISTICS SHALL BE PLACED ON A VALVE DEDICATED TO PROVIDE THE NECESSARY WATER REQUIREMENTS SPECIFIC TO THAT HYDROZONE.
- THE IRRIGATION SYSTEM SHALL BE DESIGNED AND INSTALLED, TO THE MAXIMUM EXTENT POSSIBLE, TO CONSERVE WATER BY USING THE FOLLOWING DEVICES AND SYSTEMS: MATCHED PRECIPITATION RATE TECHNOLOGY ON ROTOR AND SPRAY HEADS (WHEREVER POSSIBLE), RAIN SENSORS, AND MULTI-PROGRAM COMPUTERIZED IRRIGATION CONTROLLERS FEATURING SENSORY INPUT CAPABILITIES.

PRELIMINARY NOT FOR CONSTRUCTION



Know what's below.
Call before you dig.
Dial 811

LANDSCAPE PLANTING PLAN

N TUSTIN AVE
SANTA ANA, CA 92705



Scale	Horizontal	Vertical
As Shown	As Shown	As Shown

Barghausen
Consulting Engineers, Inc.
1825 72nd Avenue South
Suite 100
San Diego, CA 92108
619-584-1000
barghausen.com





CENTRA

- ### PRODUCT

- ## METHODS

- DUTCH BROS. COFFEE - CA4408 - SANTA ANA, CA**

PRELIMINARY NOT FOR CONSTRUCTION