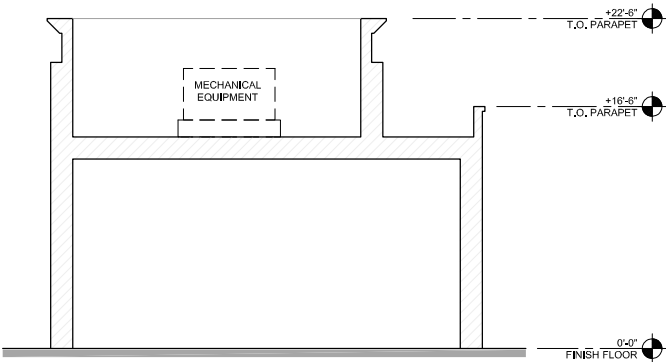


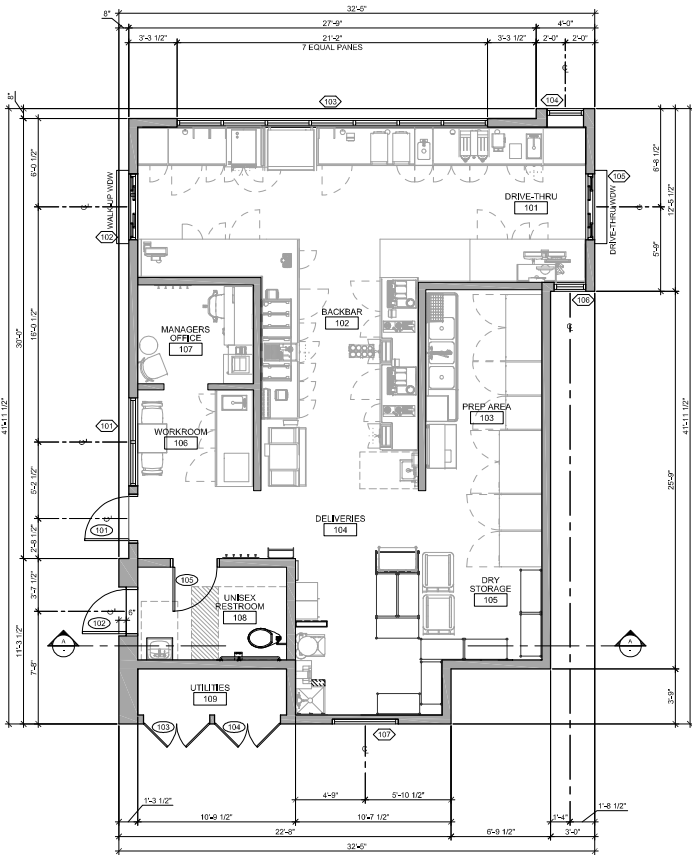
CUP No. 2024-13 For Starbucks Drive-Through
2235 South Bristol Street
Exhibit 7

DOOR SCHEDULE										
NO.	ROOM NAME	TYPE	SIZE	THK.	MAT'L	FRAME	FINISH	HDW.	DETAIL	REMARKS
101	DELIVERIES	A	3'-0" x 7'-0"	1-3/4"	H.M.	H.M.	-	-	-	
102	UNISEX RESTROOM	B	3'-0" x 7'-0"	1-3/4"	H.M.	H.M.	-	-	-	NO HARDWARE ON EXTERIOR SIDE
103	UTILITIES	B	PR 2'-0" x 7'-0"	1-3/4"	H.M.	H.M.	-	-	-	
104	UNISEX RESTROOM	B	PR 2'-0" x 7'-0"	1-3/4"	H.M.	H.M.	-	-	-	
105	UNISEX RESTROOM	A	3'-0" x 7'-0"	1-3/4"	H.M.	H.M.	-	-	-	

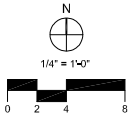
WINDOW SCHEDULE									
NO.	ROOM	TYPE	SIZE	GLAZING	MAT'L	FRAME	FINISH	DETAIL	NOTES
101	WORKROOM	-	6'-0" x 6'-0"	1/4"	ALUM.	ALUM.	PAINT	-	
102	DRIVE-THRU	-	4'-0" x 16'-0"	1/4"	ALUM.	ALUM.	PAINT	-	DRIVE-THRU WINDOW
103	DRIVE-THRU	-	21'-0" x 6'-0"	1/4"	ALUM.	ALUM.	PAINT	-	7 EQUALLY SPACED PANES
104	DRIVE-THRU	-	2'-0" x 6'-0"	1/4"	ALUM.	ALUM.	PAINT	-	
105	DRIVE-THRU	-	2'-0" x 6'-0"	1/4"	ALUM.	ALUM.	PAINT	-	DRIVE-THRU WINDOW
106	DRIVE-THRU	-	2'-0" x 6'-0"	1/4"	ALUM.	ALUM.	PAINT	-	
107	DRY STORAGE	-	4'-6" x 4'-6"	1/4"	ALUM.	ALUM.	PAINT	-	SPANDREL GLASS



BUILDING SECTION - 'A'



FLOOR PLAN



This plan and concept drawings are property of AMOR ARCHITECTURAL CORPORATION. This drawing is loaned without other consideration than the agreement and condition that it is not to be reproduced, copied, or otherwise disposed of, directly or indirectly, and is not to be used in whole or in part to assist in making or to furnish any information for the making of drawings, prints, apparatus or parts thereof. The acceptance of this drawing will be construed as an acceptance of the foregoing conditions and as an admission of the exclusive ownership of the plan and concept drawings of AMOR ARCHITECTURAL CORPORATION. This is a conceptual plan only and is subject to change. AMOR ARCHITECTURAL CORPORATION makes no warranty nor representation to its accuracy.

STARBUCKS
BRISTOL ST. & WARNER AVE.
SANTA ANA, CA

A2164
2024.04.22

9431 HAVEN AVE, SUITE 212
RANCHO CUCAMONGA, CA 91730
909.259.9971 TEL.
909.944.8409 FAX.
www.AmorArch.com

Amor
Architectural
Corporation

A2.0

© 2024 AMOR ARCHITECTURAL CORPORATION • All Rights Reserved