

NOTE

1. ROOF DRAINAGE SHALL BE INTEGRATED WITHIN INTERIOR CONSTRUCTION
2. EXTERIOR LADDERS MUST BE ENCLOSED WITHIN CONSTRUCTION OR WITHIN ENCLOSURES DESIGNED TO MATCH THE PROPOSED BUILDINGS WITH COMPLEMENTARY MATERIALS AND PAINT COLOR
3. FIRE EQUIPMENT, CONDUITS, AND RISERS ON ELEVATIONS WILL BE CONCEALED WITHIN INTERIOR CONSTRUCTION DURING PLAN CHECK

MATERIAL LEGEND

- 1 EXTERIOR CEMENT STUCCO
COLOR 1 SW7000 IBIS WHITE
- 2 EXTERIOR CEMENT STUCCO
COLOR 2 SW6227 MEDITATIVE
- 3 EXTERIOR CEMENT STUCCO
COLOR 3 SW6349 PENYWISE
- 4 EXTERIOR CEMENT STUCCO
COLOR 4 SW7067 CITYSCAPE
- 5 EXTERIOR CEMENT STUCCO
COLOR 5 SW6095 TOASTY
- 6 RECESSED DUAL GLAZED VINYL WINDOWS
WHITE COLORED FRAME
(SEE DETAIL 1 SHEET 3.5)
- 7 WOOD FRAMED AWNING
- 8 METAL CANOPY
- 9 SCREED LINE
- 10 EXTERIOR VENEER FINISH
- 11 ENTRY DOOR - THERMA-TRU 'PULSE' OR SIMILAR
- 12 PAINTED SYNTHETIC WOOD GUARD RAIL
- 13 EXTERIOR LIGHT FIXTURE
- 14 GARAGE DOOR - WAYNE DALTON '9100' OR SIMILAR



CABRILLO CROSSING - LIVE / WORK - RESIDENTIAL

BUILDING ELEVATIONS

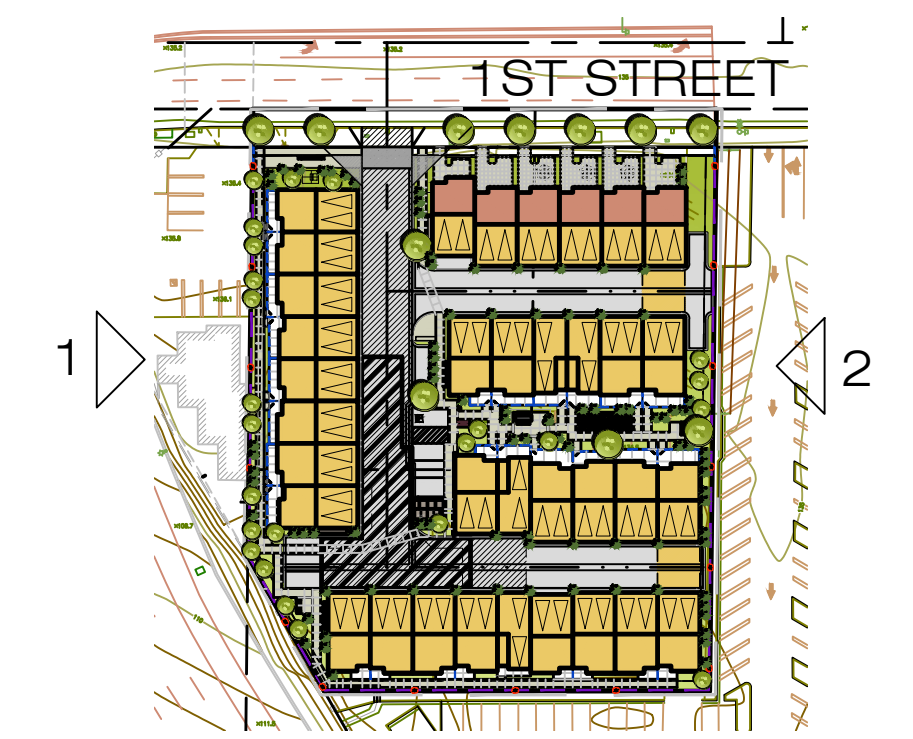


APPLICANT:
BRANDYWINE HOMES
16590 ASTON IRVINE, CA 92606
t. 949. 296. 2400 f. 949. 296. 2420

scale: 1/8" = 1'-0"
0 8 16 24 32



WITHEE MALCOLM ARCHITECTS
A BSB DESIGN STUDIO
2251 West 190th Street Torrance, CA 90504
t. 310. 217. 8885 f. 310. 217. 0425
JOB: C1030 February 09, 2021
PRINTED: April 13, 2022



NOTE

1. ROOF DRAINAGE SHALL BE INTEGRATED WITHIN INTERIOR CONSTRUCTION
2. EXTERIOR LADDERS MUST BE ENCLOSED WITHIN CONSTRUCTION OR WITHIN ENCLOSURES DESIGNED TO MATCH THE PROPOSED BUILDINGS WITH COMPLEMENTARY MATERIALS AND PAINT COLOR
3. FIRE EQUIPMENT, CONDUITS, AND RISERS ON ELEVATIONS WILL BE CONCEALED WITHIN INTERIOR CONSTRUCTION DURING PLAN CHECK

MATERIAL LEGEND

- 1 EXTERIOR CEMENT STUCCO
COLOR 1 SW7000 IBIS WHITE
- 2 EXTERIOR CEMENT STUCCO
COLOR 2 SW6227 MEDITATIVE
- 3 EXTERIOR CEMENT STUCCO
COLOR 3 SW6349 PENYWISE
- 4 EXTERIOR CEMENT STUCCO
COLOR 4 SW7067 CITYSCAPE
- 5 EXTERIOR CEMENT STUCCO
COLOR 5 SW6095 TOASTY
- 6 RECESSED DUAL GLAZED VINYL WINDOWS
WHITE COLORED FRAME
(SEE DETAIL 1 SHEET 3.5)
- 7 WOOD FRAMED AWNING
- 8 METAL CANOPY
- 9 SCREED LINE
- 10 EXTERIOR VENEER FINISH
- 11 ENTRY DOOR - THERMA-TRU 'PULSE' OR SIMILAR
- 12 PAINTED SYNTHETIC WOOD GUARD RAIL
- 13 EXTERIOR LIGHT FIXTURE
- 14 GARAGE DOOR - WAYNE DALTON '9100' OR SIMILAR



CABRILLO CROSSING - LIVE / WORK - RESIDENTIAL

BUILDING ELEVATIONS

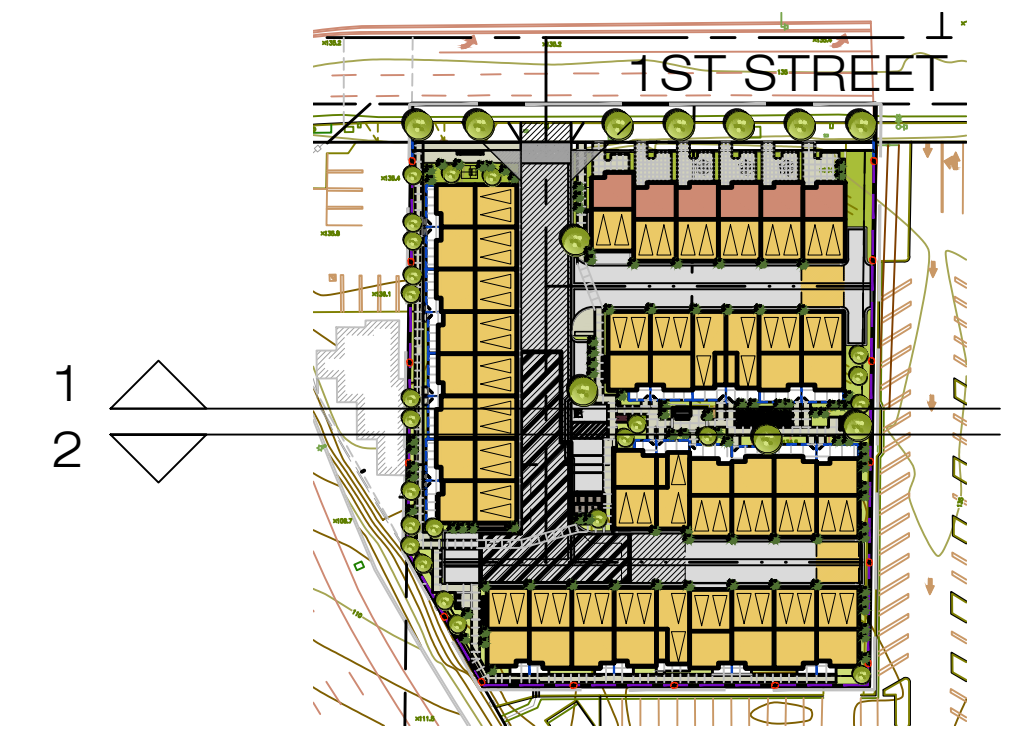


APPLICANT:
BRANDYWINE HOMES
16590 ASTON IRVINE, CA 92606
t. 949. 296. 2400 f. 949. 296. 2420

scale: 1/8" = 1'-0"
0 8 16 24 32








WITHEE MALCOLM ARCHITECTS
A BSB DESIGN STUDIO
2251 West 190th Street Torrance, CA 90504
t. 310. 217. 8885 f. 310. 217. 0425
JOB: C1030 February 09, 2021
PRINTED: April 13, 2022



NOTE

1. ROOF DRAINAGE SHALL BE INTEGRATED WITHIN INTERIOR CONSTRUCTION
2. EXTERIOR LADDERS MUST BE ENCLOSED WITHIN CONSTRUCTION OR WITHIN ENCLOSURES DESIGNED TO MATCH THE PROPOSED BUILDINGS WITH COMPLEMENTARY MATERIALS AND PAINT COLOR
3. FIRE EQUIPMENT, CONDUITS, AND RISERS ON ELEVATIONS WILL BE CONCEALED WITHIN INTERIOR CONSTRUCTION DURING PLAN CHECK

MATERIAL LEGEND

- | | | |
|---|---|---|
| ① | EXTERIOR CEMENT STUCCO
COLOR 1 SW7000 IBIS WHITE |  |
| ② | EXTERIOR CEMENT STUCCO
COLOR 2 SW6227 MEDITATIVE |  |
| ③ | EXTERIOR CEMENT STUCCO
COLOR 3 SW6349 PENYWISE |  |
| ④ | EXTERIOR CEMENT STUCCO
COLOR 4 SW7067 CITYSCAPE |  |
| ⑤ | EXTERIOR CEMENT STUCCO
COLOR 5 SW6095 TOASTY |  |
| ⑥ | RECESSED DUAL GLAZED VINYL WINDOWS
WHITE COLORED FRAME
(SEE DETAIL 1 SHEET 3.5) | |
| ⑦ | WOOD FRAMED AWNING | |
| ⑧ | METAL CANOPY | |
| ⑨ | SCREED LINE | |
| ⑩ | EXTERIOR VENEER FINISH | |
| ⑪ | ENTRY DOOR - THERMA-TRU 'PULSE' OR SIMILAR | |
| ⑫ | PAINTED SYNTHETIC WOOD GUARD RAIL | |
| ⑬ | EXTERIOR LIGHT FIXTURE | |
| ⑭ | GARAGE DOOR - WAYNE DALTON '9100' OR SIMILAR | |

CABRILLO CROSSING - LIVE / WORK - RESIDENTIAL

BUILDING ELEVATIONS

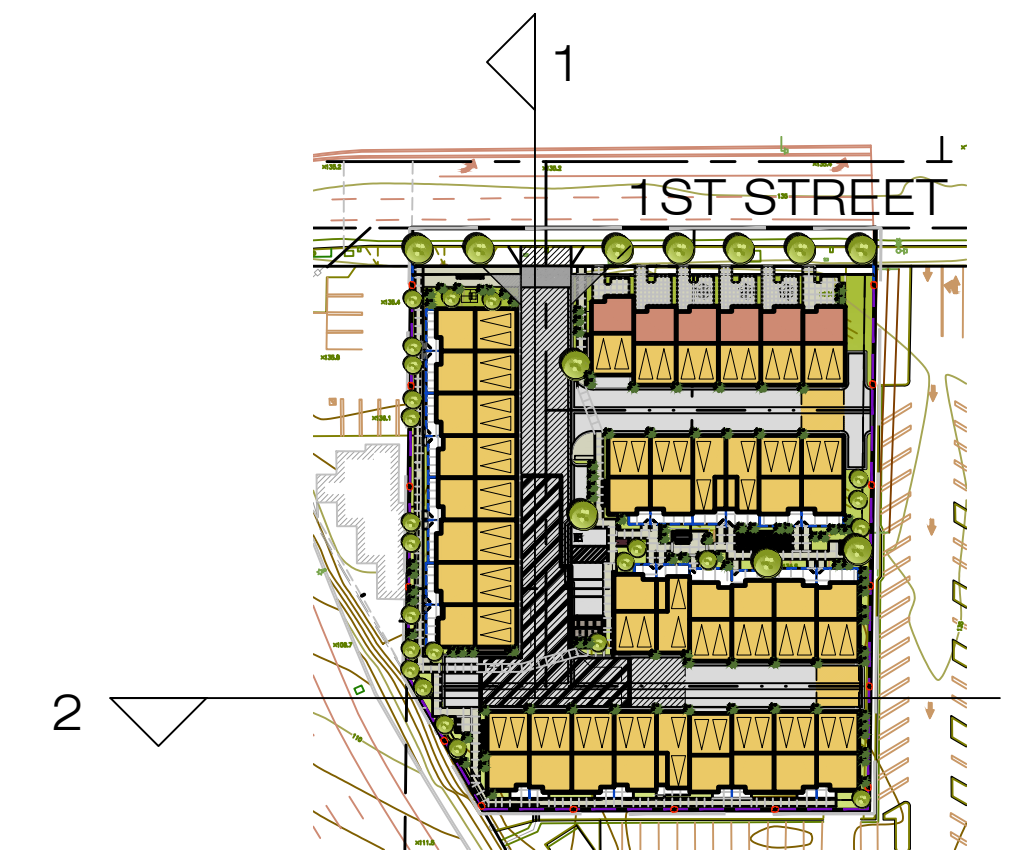


APPLICANT:
BRANDYWINE HOMES
16590 ASTON IRVINE, CA 92606
t. 949. 296. 2400 f. 949. 296. 2420

scale: 1/8" = 1'-0"
0 8 16 24 32








WITHEE MALCOLM ARCHITECTS
A BSB DESIGN STUDIO
2251 West 190th Street Torrance, CA 90504
t. 310. 217. 8885 f. 310. 217. 0425
JOB: C1030 February 09, 2021
PRINTED: April 13, 2022



NOTE

1. ROOF DRAINAGE SHALL BE INTEGRATED WITHIN INTERIOR CONSTRUCTION
2. EXTERIOR LADDERS MUST BE ENCLOSED WITHIN CONSTRUCTION OR WITHIN ENCLOSURES DESIGNED TO MATCH THE PROPOSED BUILDINGS WITH COMPLEMENTARY MATERIALS AND PAINT COLOR
3. FIRE EQUIPMENT, CONDUITS, AND RISERS ON ELEVATIONS WILL BE CONCEALED WITHIN INTERIOR CONSTRUCTION DURING PLAN CHECK

MATERIAL LEGEND

- | | | |
|---|---|---|
| ① | EXTERIOR CEMENT STUCCO
COLOR 1 SW7000 IBIS WHITE |  |
| ② | EXTERIOR CEMENT STUCCO
COLOR 2 SW6227 MEDITATIVE |  |
| ③ | EXTERIOR CEMENT STUCCO
COLOR 3 SW6349 PENYWISE |  |
| ④ | EXTERIOR CEMENT STUCCO
COLOR 4 SW7067 CITYSCAPE |  |
| ⑤ | EXTERIOR CEMENT STUCCO
COLOR 5 SW6095 TOASTY |  |
| ⑥ | RECESSED DUAL GLAZED VINYL WINDOWS
WHITE COLORED FRAME
(SEE DETAIL 1 SHEET 3.5) | |
| ⑦ | WOOD FRAMED AWNING | |
| ⑧ | METAL CANOPY | |
| ⑨ | SCREED LINE | |
| ⑩ | EXTERIOR VENEER FINISH | |
| ⑪ | ENTRY DOOR - THERMA-TRU 'PULSE' OR SIMILAR | |
| ⑫ | PAINTED SYNTHETIC WOOD GUARD RAIL | |
| ⑬ | EXTERIOR LIGHT FIXTURE | |
| ⑭ | GARAGE DOOR - WAYNE DALTON '9100' OR SIMILAR | |

CABRILLO CROSSING - LIVE / WORK - RESIDENTIAL



APPLICANT:
BRANDYWINE HOMES
16590 ASTON IRVINE, CA 92606
t. 949. 296. 2400 f. 949. 296. 2420

scale: 1/8" = 1'-0"
0 8 16 24 32

BUILDING ELEVATIONS



WITHEE MALCOLM ARCHITECTS
A BSB DESIGN STUDIO
2251 West 190th Street Torrance, CA 90504
t. 310. 217. 8885 f. 310. 217. 0425
JOB: C1030 February 09, 2021
PRINTED: April 13, 2022