

Conceptual Images (provided herein are subject to change)



LEGEND

1. Community open space area with BBQ, picnic table and overhead shade structure shade for small social events and/or group gatherings. Refer to L-2 Enlargement Plan.
2. Community bench at open space.
3. Three community cluster mailboxes, per USPS review and approval.
4. Proposed wall, pilaster, gate or fence, per Wall & Fence Plan.
5. Enhanced colored stamped concrete paving at Main Project Entry.
6. Proposed tree, per Planting Plan.
7. 4' wide community natural colored concrete sidewalk, with broom finish and saw-cut joints.
8. 4' wide unit entry natural colored concrete walk, with broom finish and saw-cut joints.
9. Natural colored concrete driveway, with light broom finish and tooled joints.
10. Monument Signage per separate future submittal.
11. Accessible parking stall and striping, per Civil plans.
12. Guest parking stall.
13. Private patio / yard area, homeowner maintained.
14. Common area landscape, builder installed and HOA maintained.
15. Accessible trash enclosure.
16. Property line.
17. Public street R.O.W.
18. Existing public street sidewalk, per Civil plans.
19. Utilities per Civil plans.
20. Street Tree in tree wells per City's Public Works department standards.
21. Short-term bicycle parking.
22. 6'-0" Vinyl gate with lockable gravity latch.

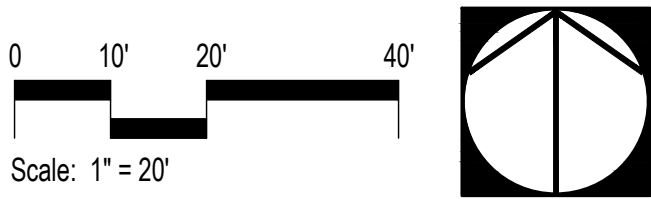


Proposed Tree, per Planting Plan



Proposed Tree, per Planting Plan

Schematic Landscape Plan



Brandywine Homes

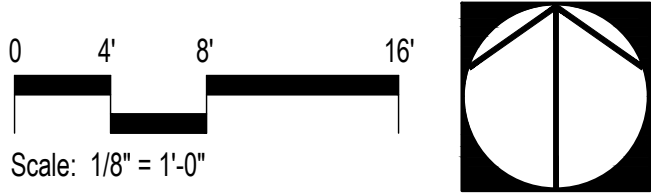


Conceptual Images (provided herein are subject to change)



LEGEND

1. Central community open space area with free standing BBQ, picnic table, lawn area and overhead shade structure for small social events and/or group gatherings. Natural colored concrete, with broom finish and saw-cut joints.
2. Open roof pergola/shade structure in rough sawn cedar with a dark wood stain.
3. Free standing BBQ grill.
4. Grass area for informal play.
5. Proposed tree, per Planting Plan.
6. Metal bench (dark bronze color) at specimen canopy tree.
7. Dog Bag Station (Black) for resident pet waste disposal.
8. 4' wide community natural colored concrete walk, with light broom finish and narrow tooled joints.
9. Community waste receptacle.
10. Common area landscape, builder installed and HOA maintained.
11. Short-term bicycle parking.

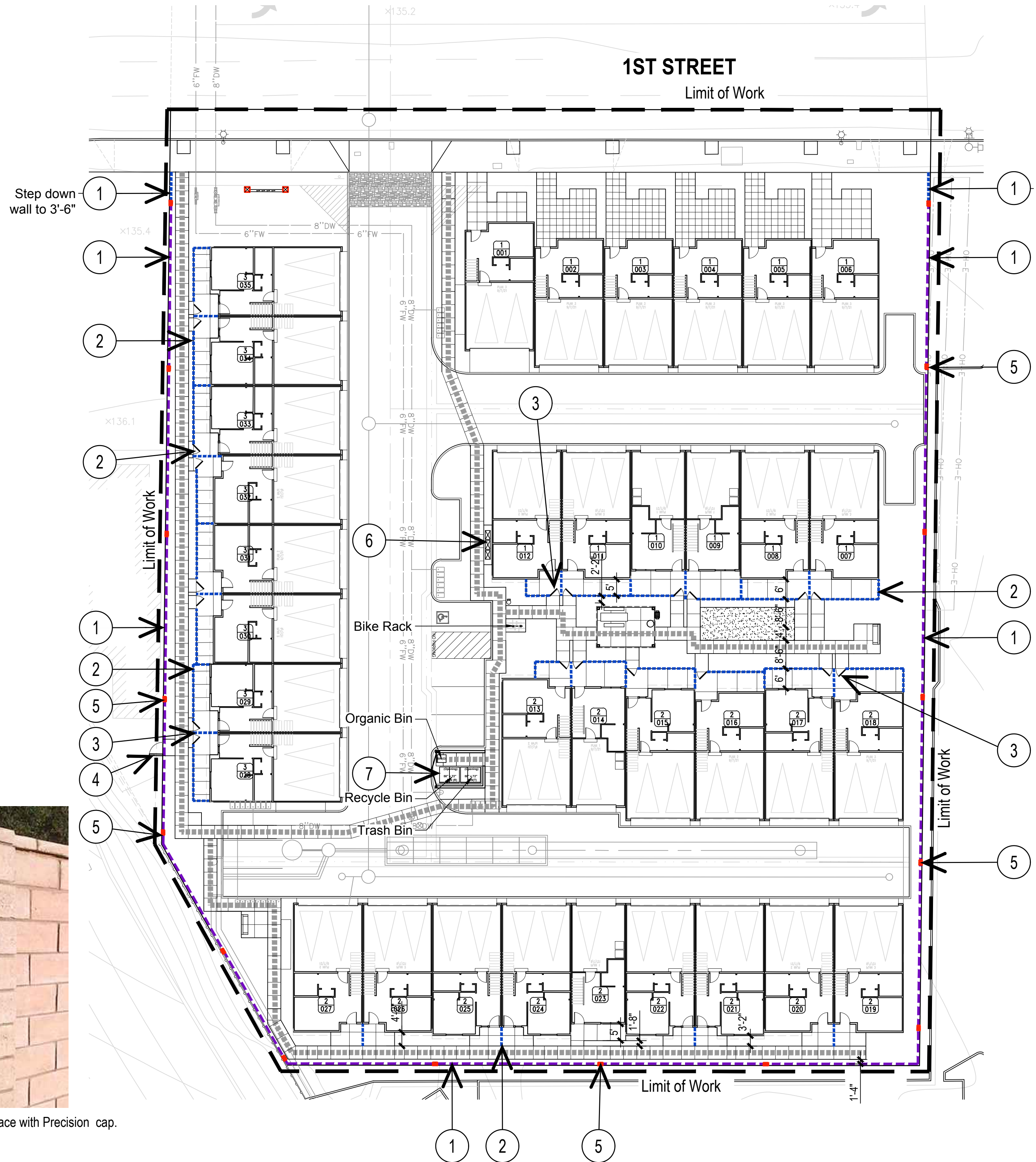


Brandywine Homes

Schematic Enlargement Plan - Community Open Space Area

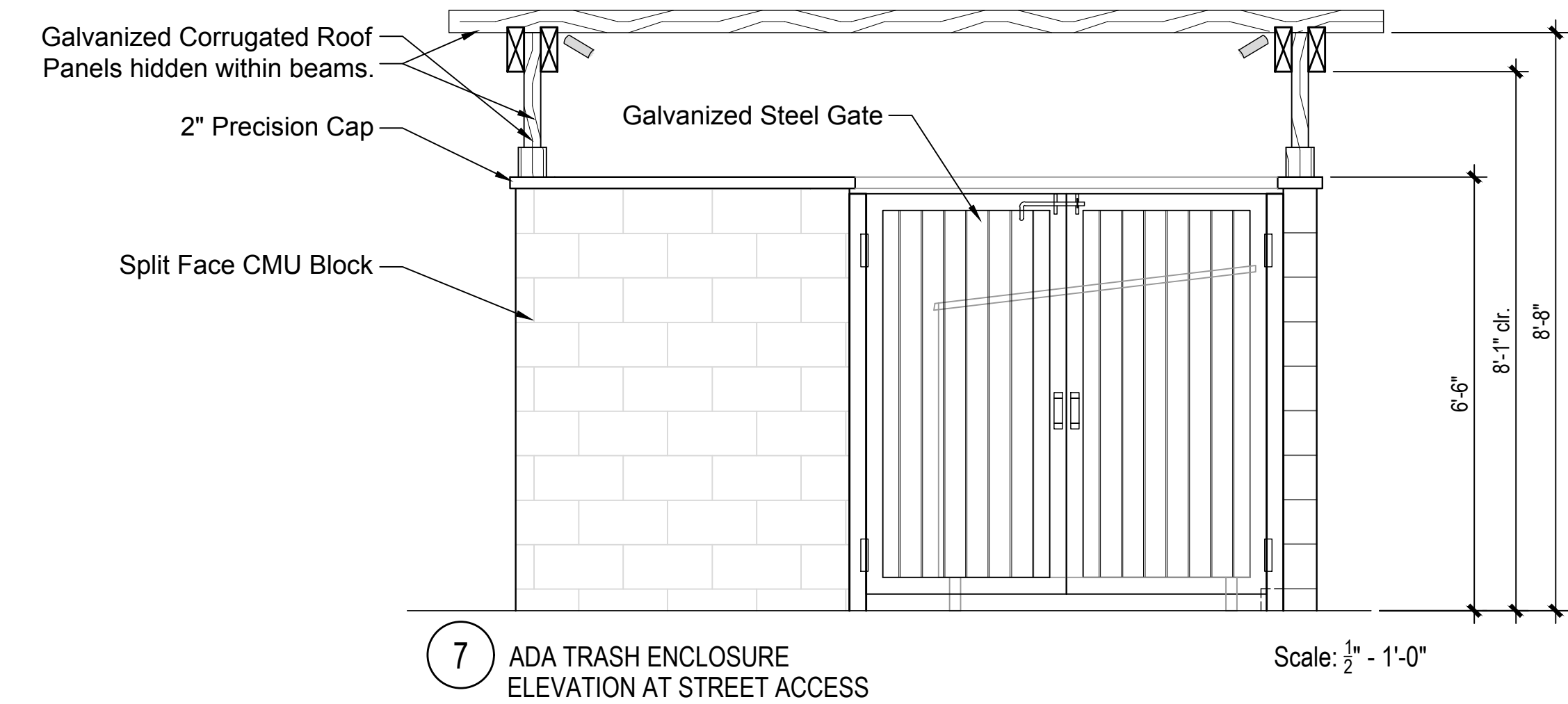
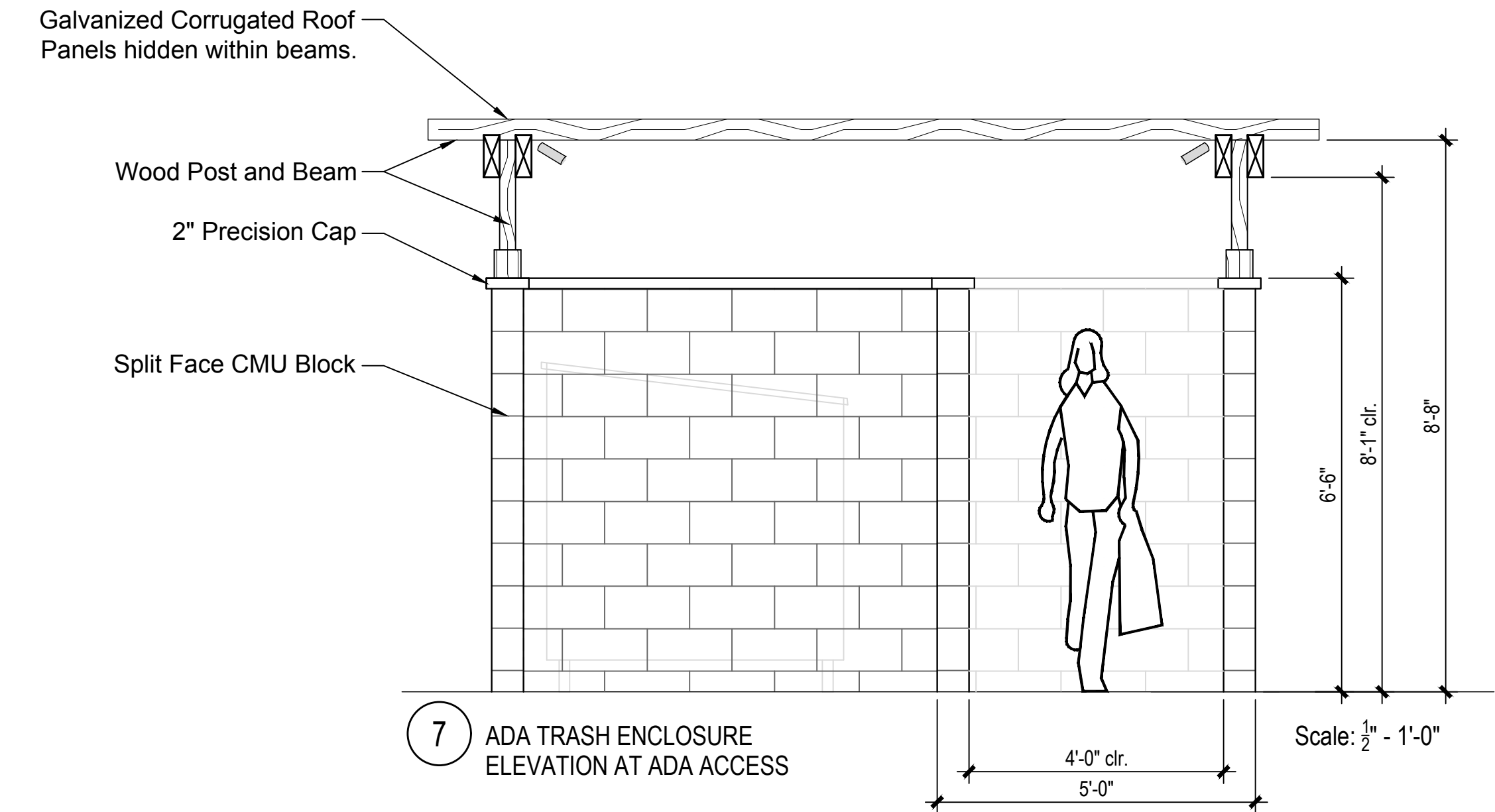


CMU Pilaster Split Face with Precision cap.

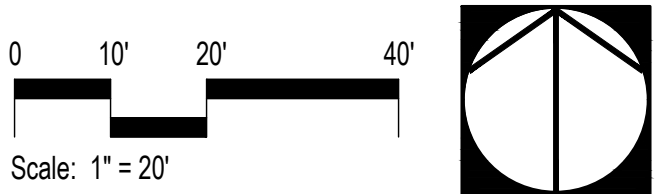


## WALL LEGEND

- 1 6'-0" High CMU split face wall with 2" precision cap (color: tan or gray).
  - 2 3'-6" High vinyl fence (color: white or tan).
  - 3 3'-6" High vinyl patio gates (color: white or tan).
  - 4 6'-0" High (4' wide) vinyl access gate with lockable gravity latch (color: white or tan).
  - 5 6'-6" High (10"W x 16"L) CMU split-face pilaster with 2" precision cap (color: tan or gray).
  - 6 USPS mailboxes & parcel lockers (color: bronze).
  - 7 Trash enclosure (designed to meet all current ADA accessible standards). (Includes 95 gallon organic 28"W x 34"D bin)
- ADA path of travel.



Per Republic Services website, a 95 gallon organics bin (28"x34" dimensions) has been added within the trash enclosure. We require (.02 CY x 35 units) .7 CY of Organic bin storage. .7 CY equals 141 gallons. Using the Republic 95 gallon bin and two pickups a week, we are collecting 190 gallons of organics / week which exceeds the required 141 gallons.



Brandywine Homes

## Schematic Wall & Fence Plan

