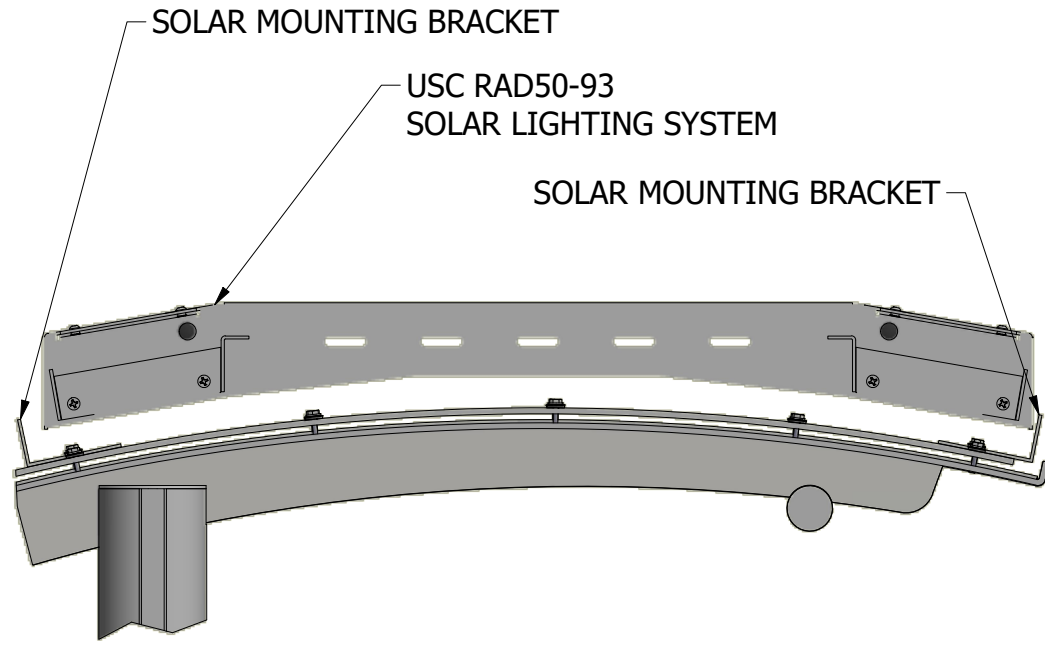
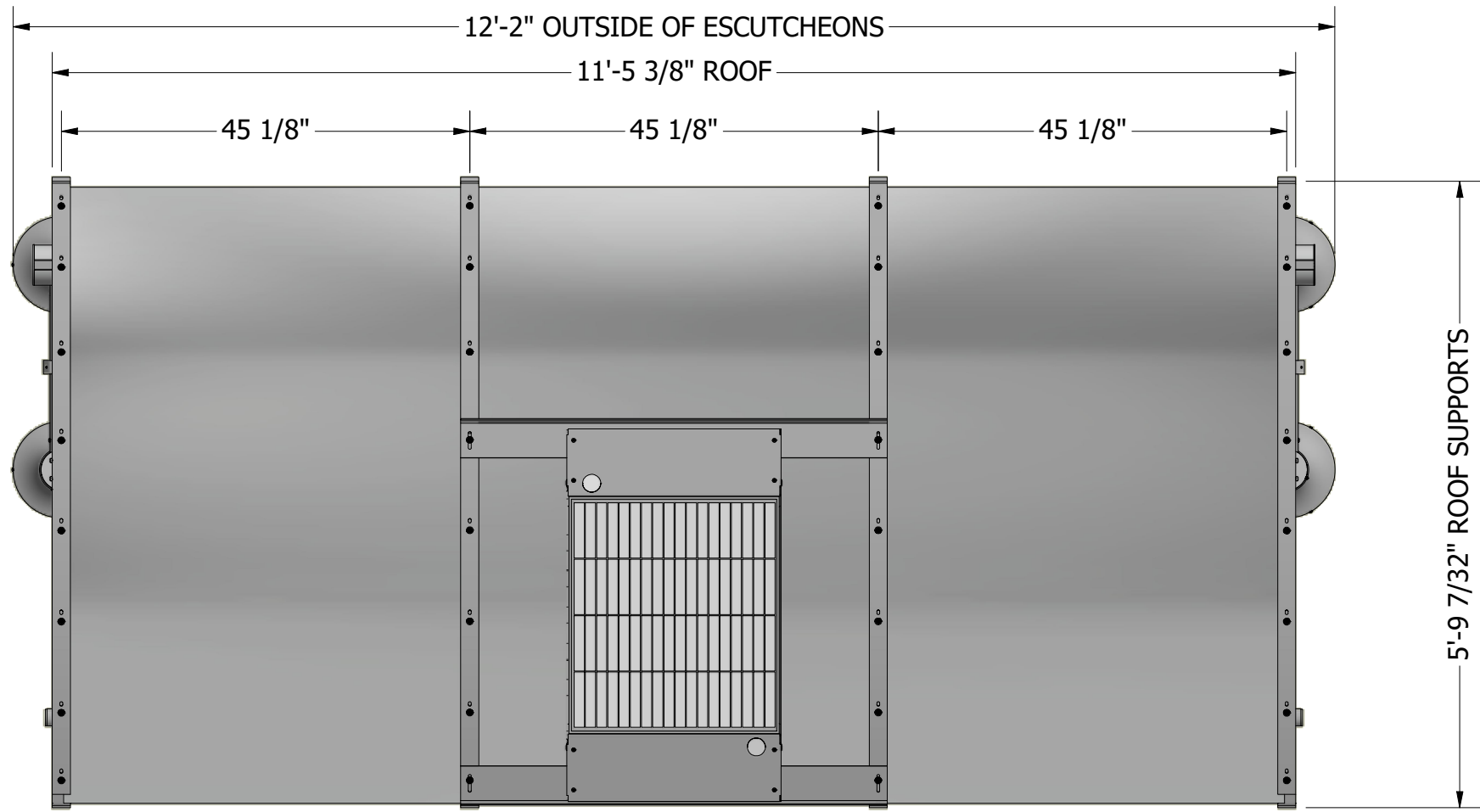


GENERAL NOTES:

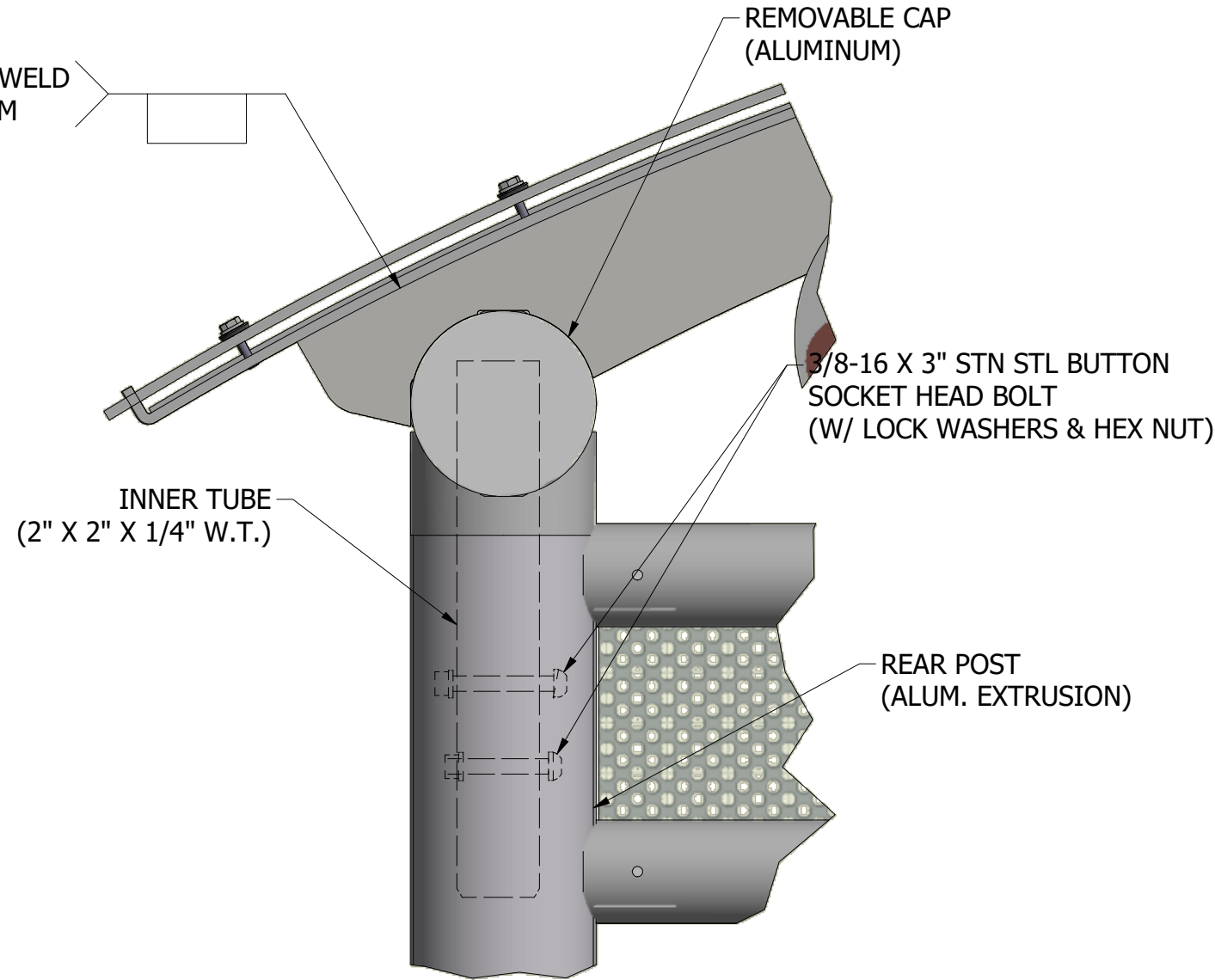
1. ALL STRUCTURAL STEEL, UNLESS OTHERWISE NOTED, SHALL BE ASTM A-36, MINIMUM YIELD STRENGTH 36,000 PSI.
2. ALL STRUCTURAL ALUMINUM MEMBERS, UNLESS OTHERWISE NOTED, SHALL BE OF ALLOY 6063-T5 OR GREATER.
3. ALL HOLES TO BE DRILLED OR PUNCHED.
4. STEEL WELDING SHALL CONFORM TO AMERICAN WELDING SOCIETY STANDARD D1. 1-10. ELECTRODES SHALL CONFORM TO AWS 5.1, CLASS E70S-5.
5. ALUMINUM WELDING SHALL CONFORM TO AMERICAN WELDING SOCIETY STANDARD D1. 2-08. ELECTRODES SHALL CONFORM TO AWS/SFA 5.10 CLASS ER4043.
6. ALL WELDING TO BE DONE AT TOLAR MANUFACTURING COMPANY, INC. FACILITY.
7. ALL CORPORATE PROCEDURES, INCLUDING FABRICATION, MUST BE IN COMPLIANCE WITH TOLAR MANUFACTURING CO. INC'S QUALITY CONTROL MANUAL.
8. MINIMUM 240 HOUR SLAB CURE PRIOR TO ANCHOR INSTALLATION



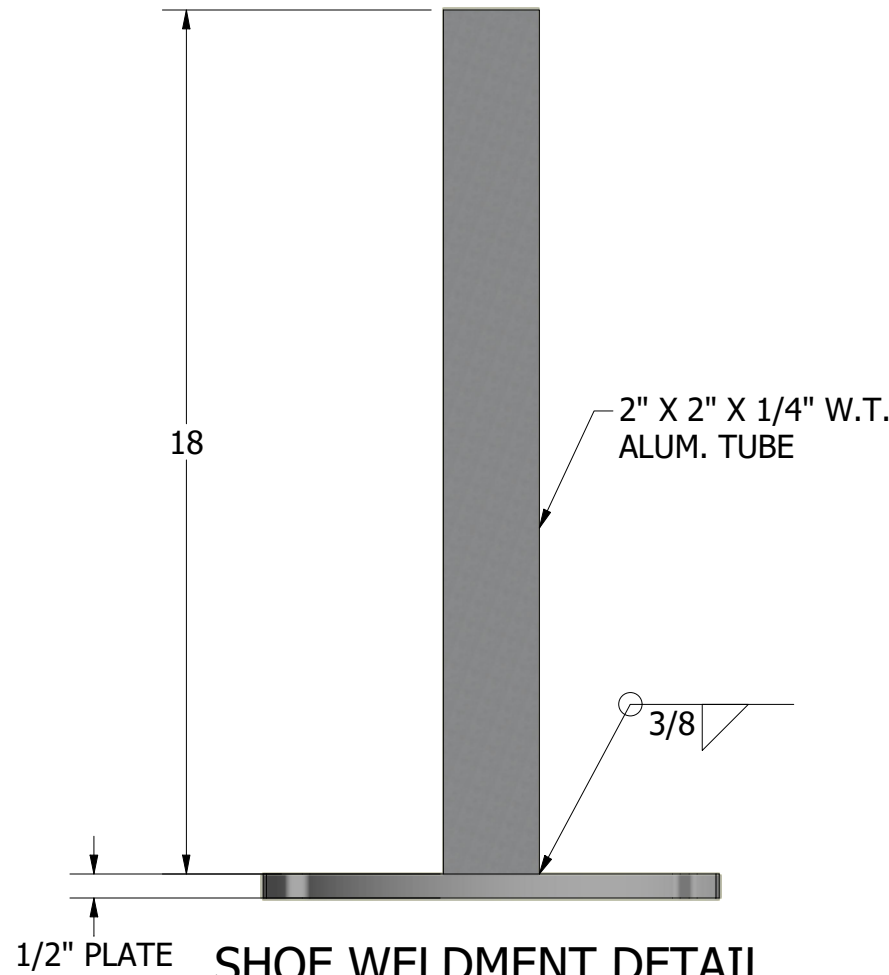
DETAIL E  
SCALE 1 / 8



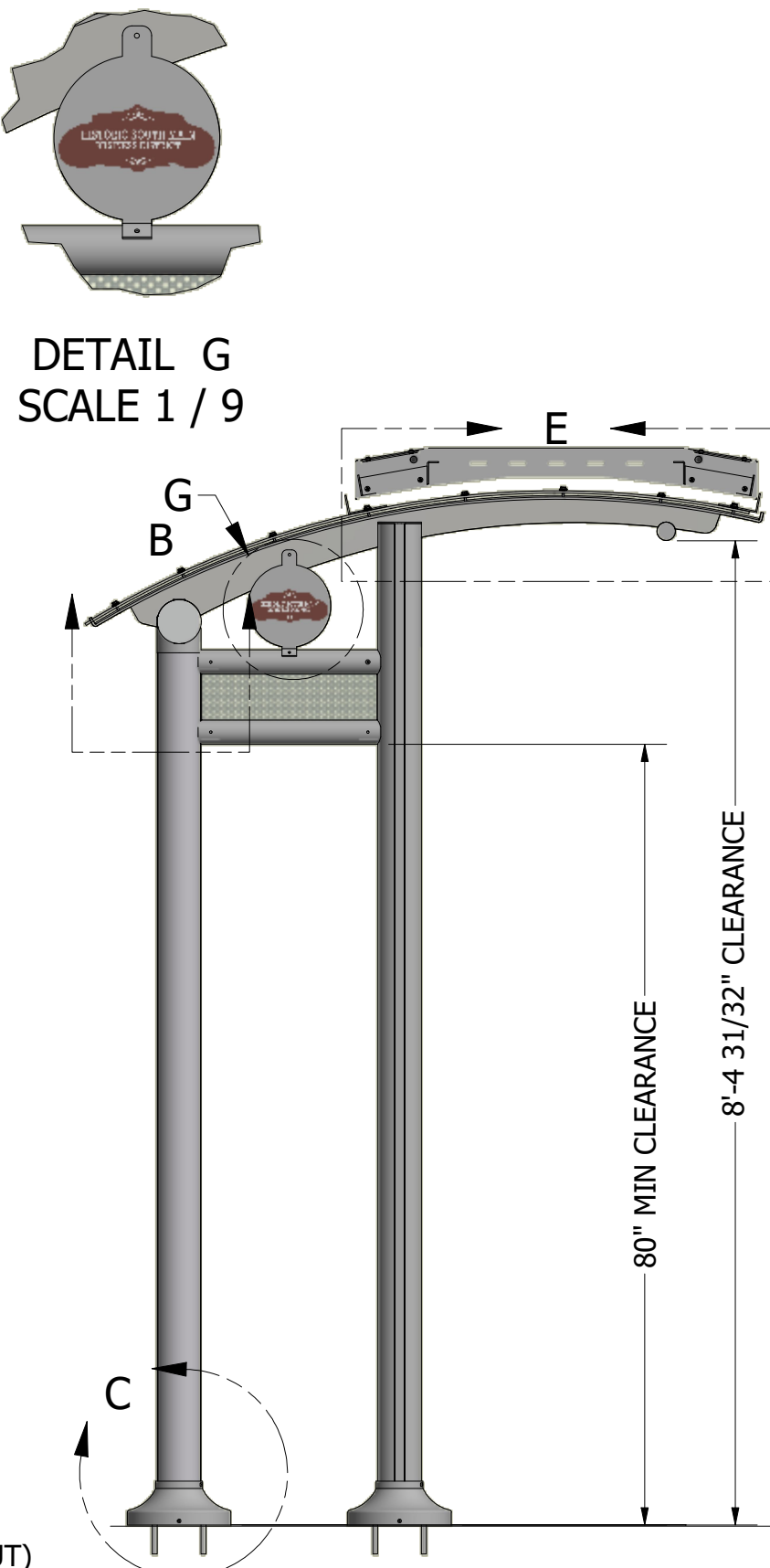
TOP VIEW



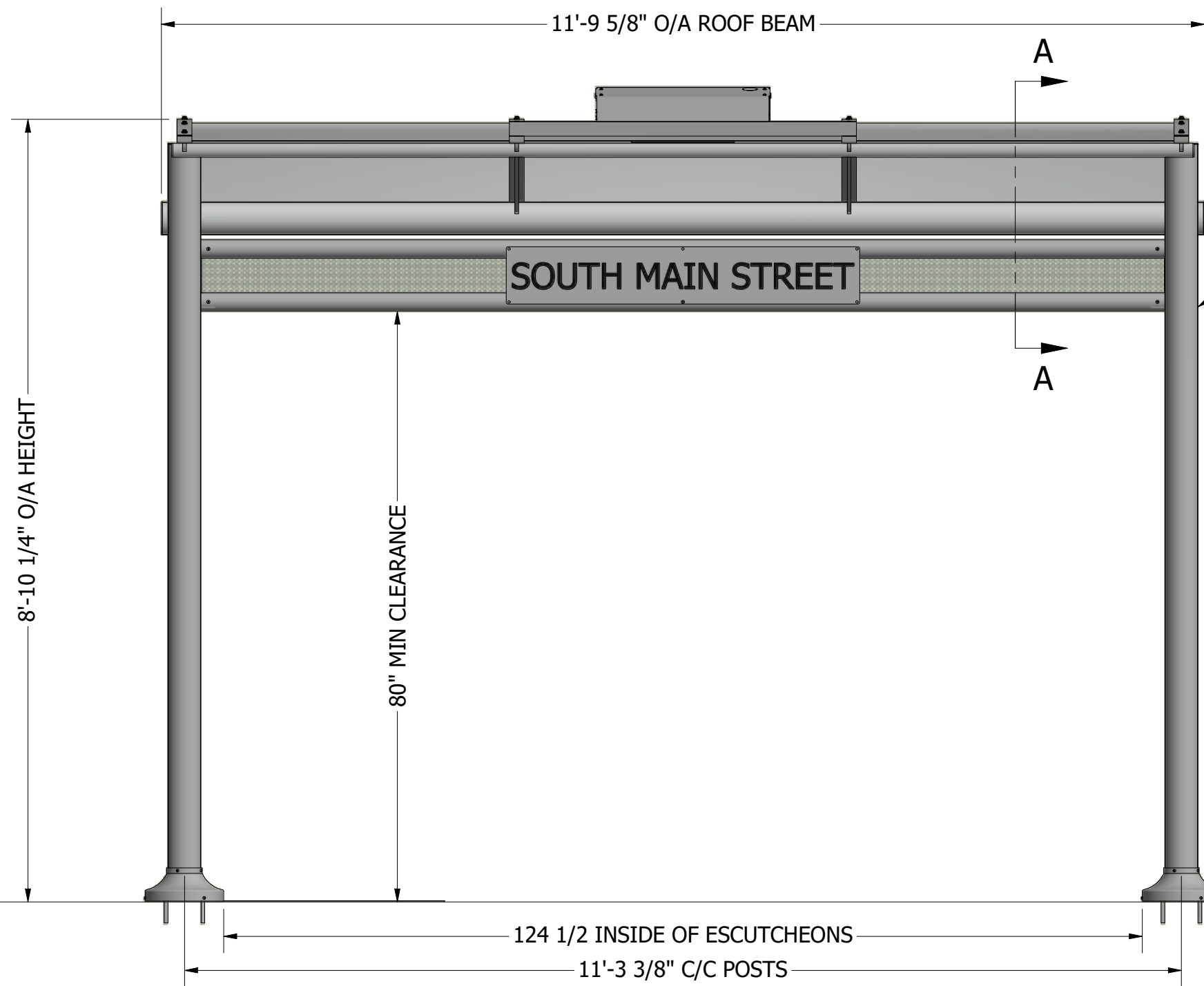
DETAIL B  
SCALE 1 / 4



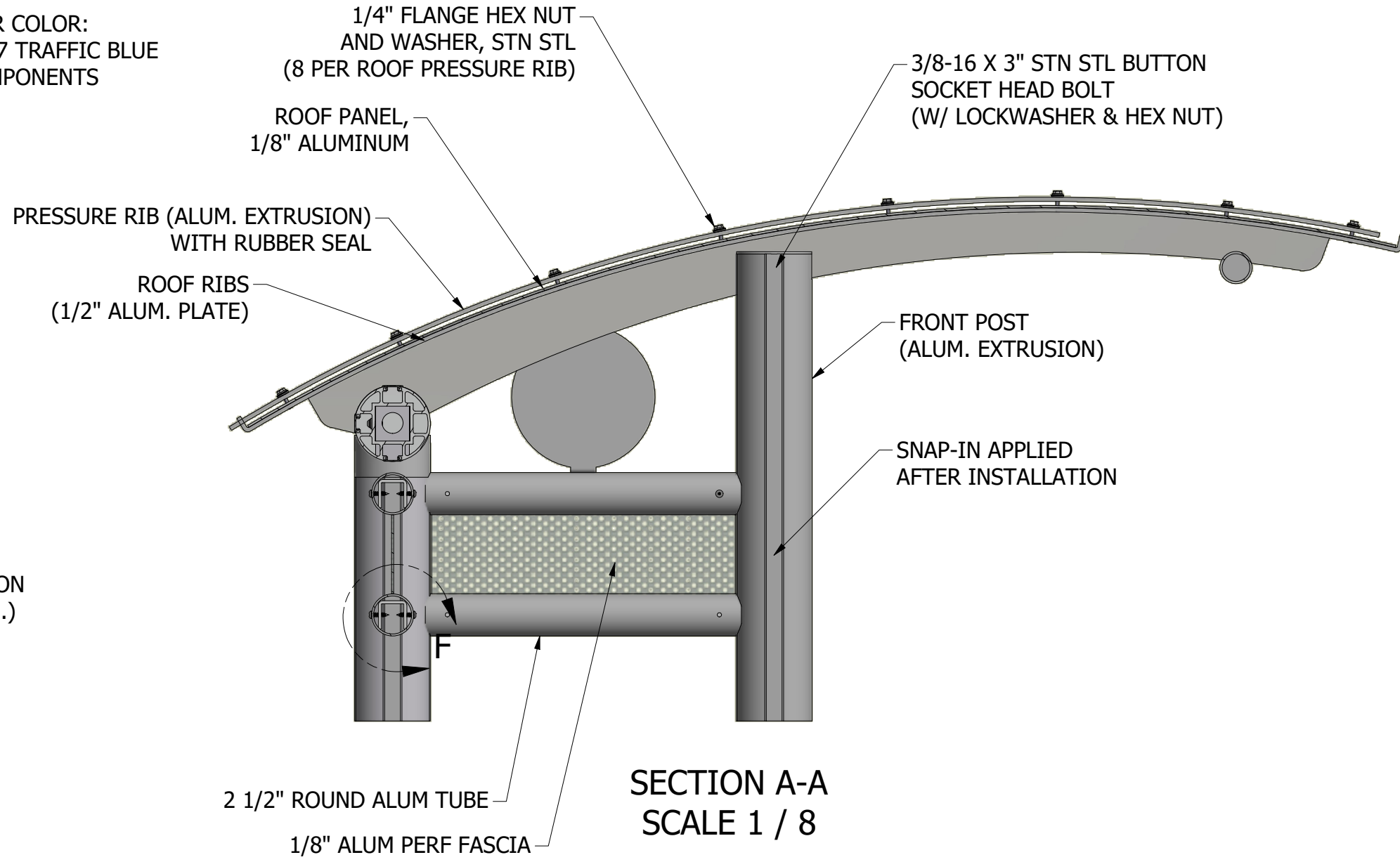
SHOE WELDMENT DETAIL  
SCALE 1 / 4



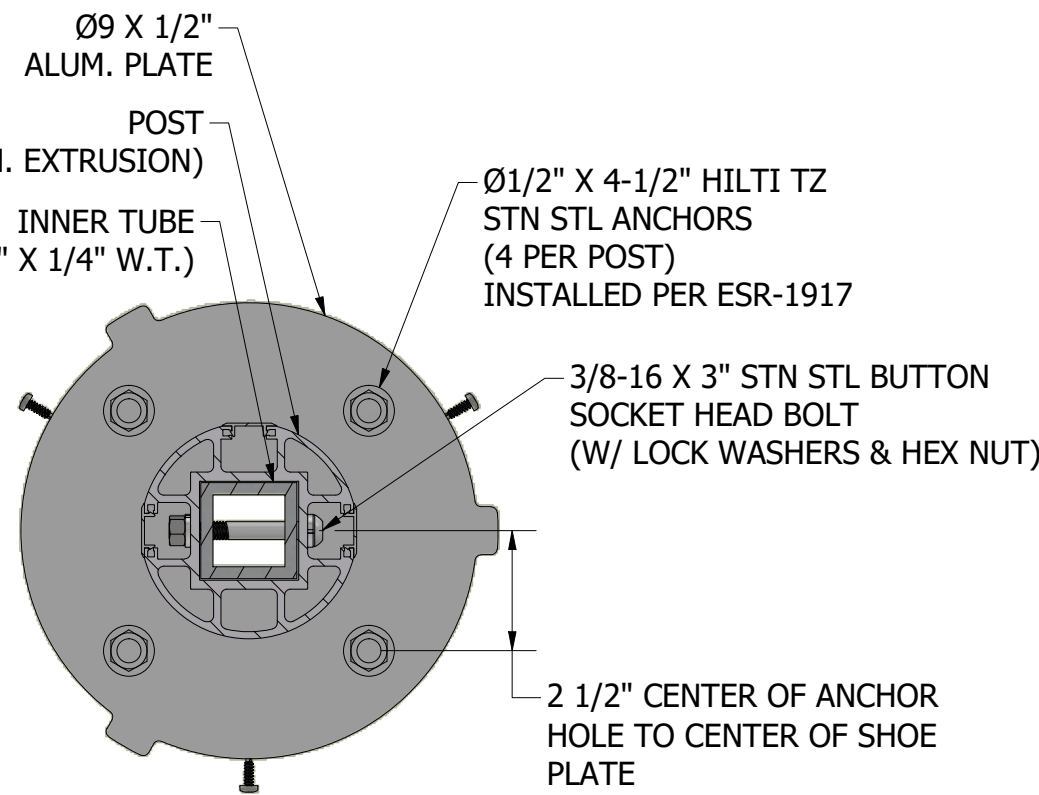
SIDE VIEW



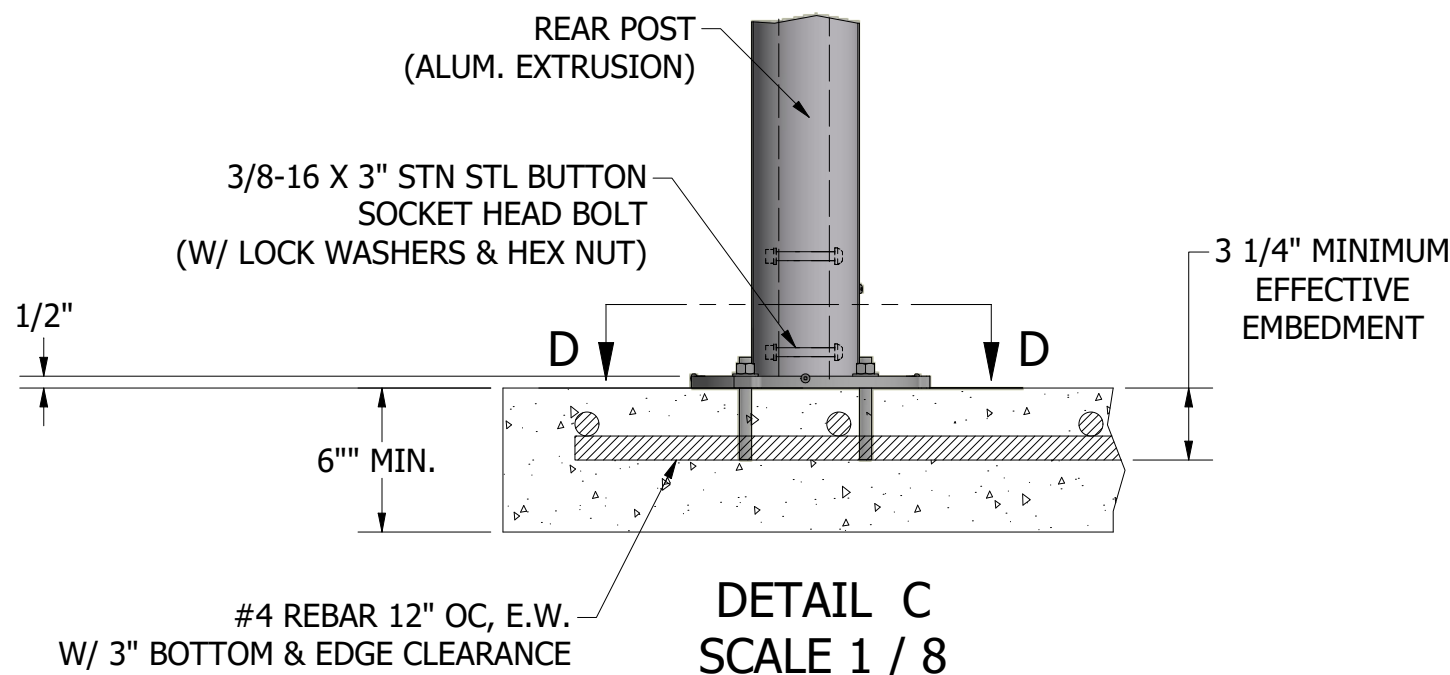
FRONT ELEVATION



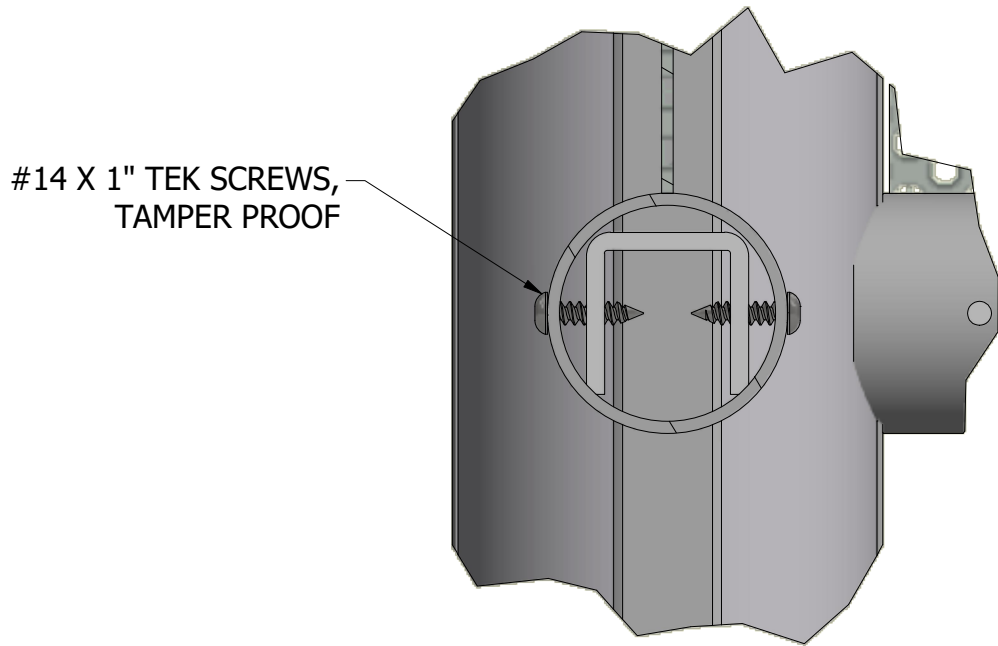
SECTION A-A  
SCALE 1 / 8



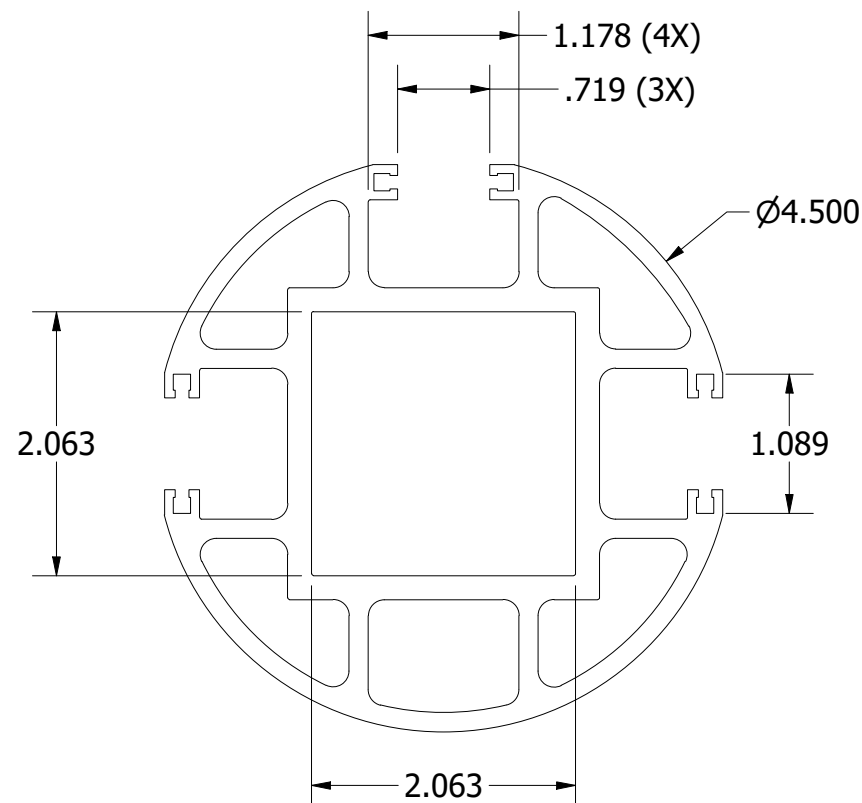
SECTION D-D  
SCALE 1 / 4



DETAIL C  
SCALE 1 / 8



DETAIL F  
SCALE 1 / 2



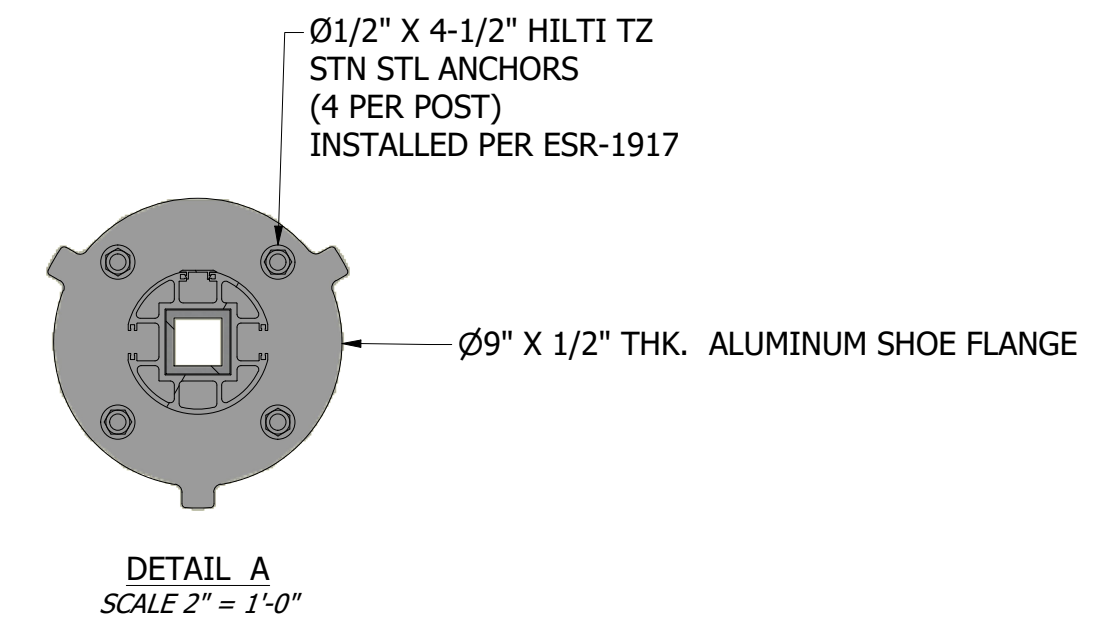
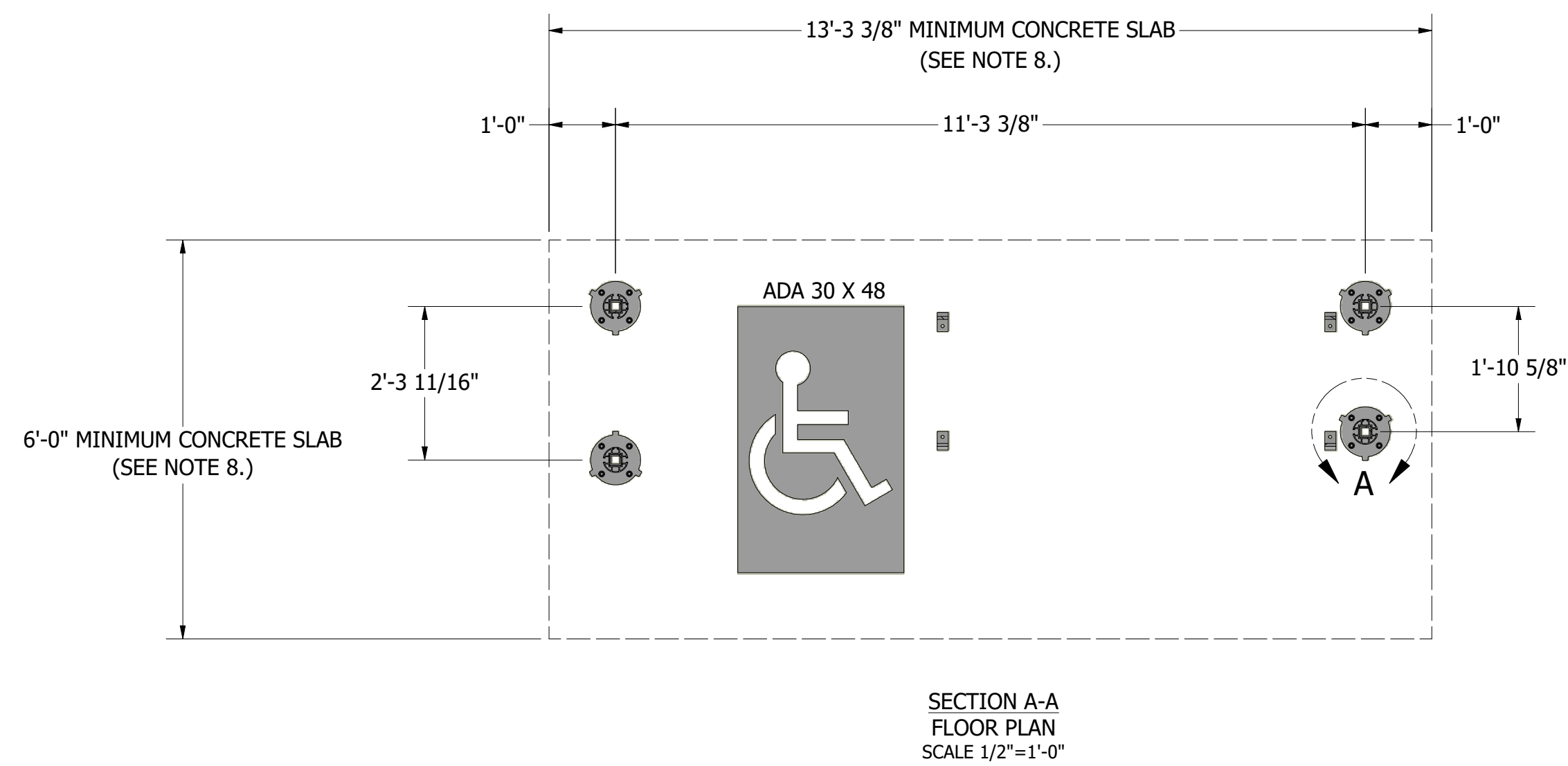
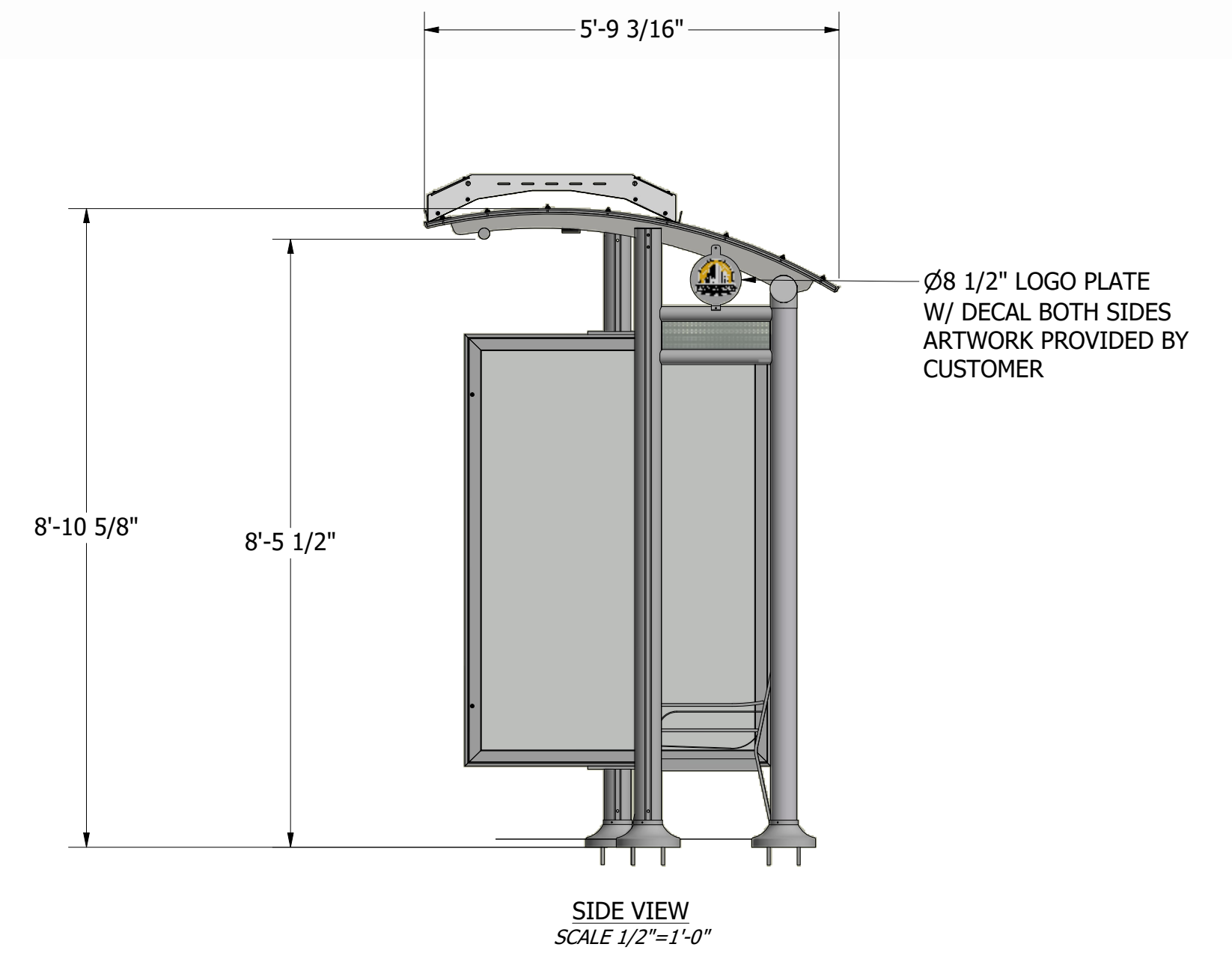
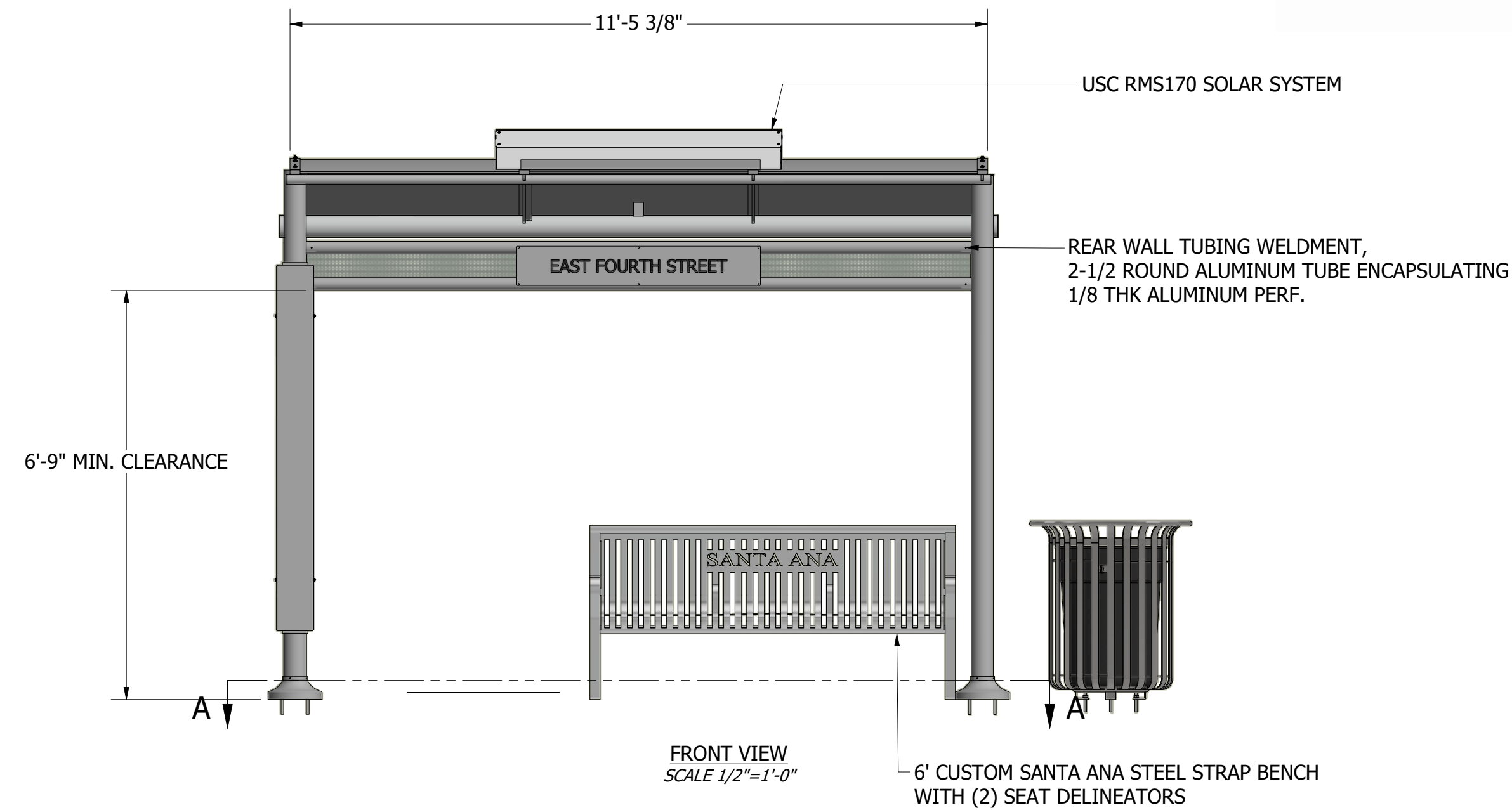
DETAIL POST/ BEAM EXTRUSION  
SCALE 2 / 3


REVISION HISTORY			
REV	DESCRIPTION	DATE	APPROVED

<b>TOLAR</b> Tolar Manufacturing Company, Inc 258 Mariah Circle, Corona CA. 92879			
DESCRIPTION <b>12' NON AD SUNSET SHELTER</b>			
CUSTOMER/VENDOR <b>SANTA ANA, CA</b>		SHEET NO. <b>1 OF 1</b>	
SIZE <b>D</b>	MATL.	DWG NO. <b>35835-03</b>	REV. NO. <b>-</b>
SCALE <b>1 / 18</b>	DATE <b>12/19/2022</b>	DRAWN BY: <b>cgarcia</b>	



1. ALL STRUCTURAL STEEL, UNLESS OTHERWISE NOTED, SHALL BE ASTM A-36, MINIMUM YIELD STRENGTH 36,000 PSI.
2. ALL STRUCTURAL ALUMINUM MEMBERS, UNLESS OTHERWISE NOTED, SHALL BE OF ALLOY 6063-T5 OR GREATER.
3. ALL HOLES TO BE DRILLED OR PUNCHED.
4. STEEL WELDING SHALL CONFORM TO AMERICAN WELDING SOCIETY STANDARD D1. 1-10. ELECTRODES SHALL CONFORM TO AWS 5.1, CLASS E70S-5.
5. ALUMINUM WELDING SHALL CONFORM TO AMERICAN WELDING SOCIETY STANDARD D1. 2-08. ELECTRODES SHALL CONFORM TO AWS/SFA 5.10 CLASS ER4043.
6. ALL WELDING TO BE DONE AT TOLAR MANUFACTURING COMPANY, INC. FACILITY.
7. ALL CORPORATE PROCEDURES, INCLUDING FABRICATION, MUST BE IN COMPLIANCE WITH TOLAR MANUFACTURING CO. INC'S QUALITY CONTROL MANUAL.
8. THE CONCRETE PAD SIZES SHOWN ARE STANDARD MINIMUM REQUIREMENTS AND ARE FOR REFERENCE ONLY. THE PAD MAY NEED TO BE REINFORCED OR ENLARGED DEPENDING ON LOCAL CODES AND LOADING CONDITIONS.

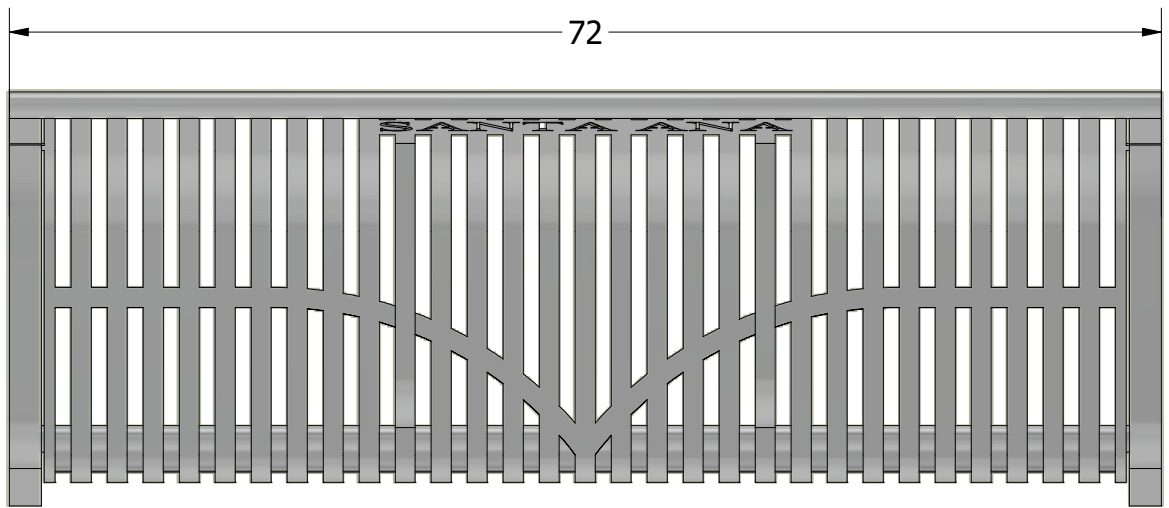


<p>THE DESIGN AND DRAWINGS REMAIN THE INTELLECTUAL PROPERTY OF <b>TOLAR MFG.</b> AND ARE PROTECTED BY LAW. THEY MAY NOT BE REPRODUCED, REPRODUCED OR USED FOR FABRICATION WITHOUT EXPRESS WRITTEN CONSENT FROM <b>TOLAR MFG.</b> ALL DOCUMENTS TO BE RETURNED TO TOLAR MFG. AT COMPLETION OF WORK. CONTRACTOR TO SITE VERIFY ALL DETAILS AND DIMENSIONS AND REPORT ANY AND ALL DISCREPANCIES TO TOLAR MFG. BEFORE COMMENCING WITH THAT RELATED PORTION OF THE WORK.</p>	 <b>TOLAR MANUFACTURING COMPANY, INC</b> 258 Mariah Circle, Corona CA. 92879	
	DESCRIPTION	
	CUSTOMER/VENDOR	
	12' AD SUNSET SHELTER	
	SANTA ANA, CA	
SIZE	MATL	DWG NO
D	VARIES	37884-00
SCALE	DATE	DRAWN BY:
AS NOTED	6/15/2020	Rfarr

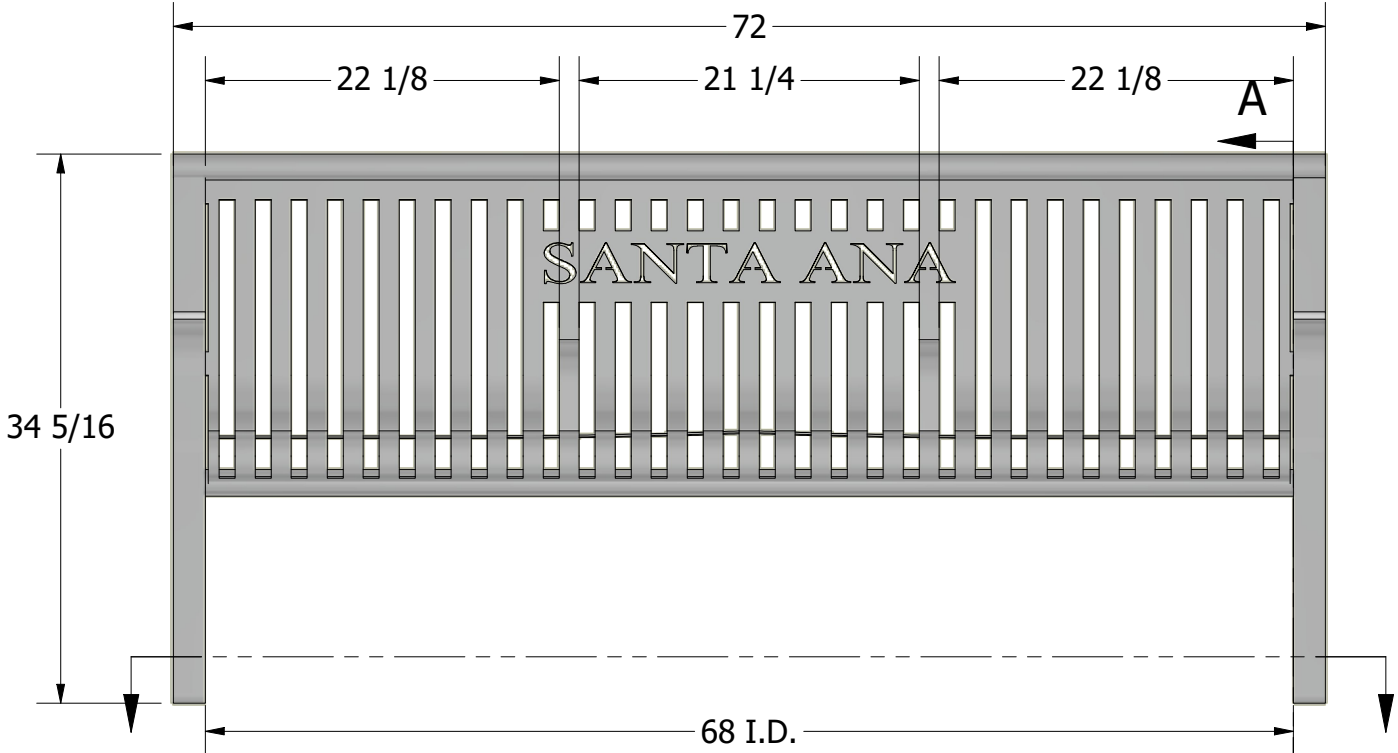


GENERAL NOTES:

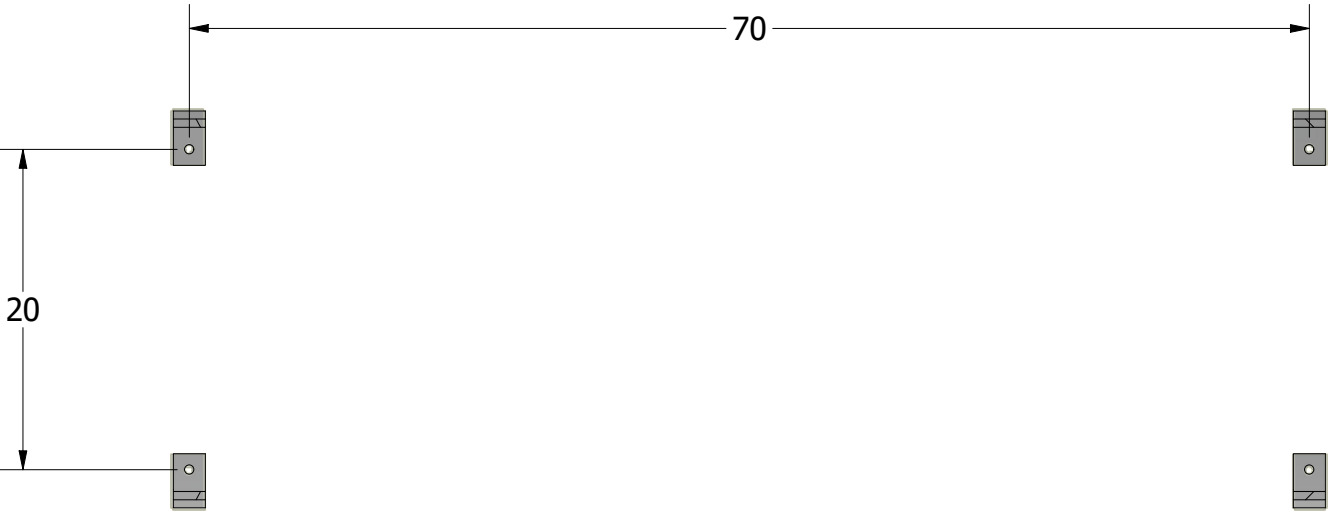
1. ALL STRUCTURAL STEEL, UNLESS OTHERWISE NOTED, SHALL BE ASTM A-36, MINIMUM YIELD STRENGTH 36,000 PSI.
2. ALL STRUCTURAL ALUMINUM MEMBERS, UNLESS OTHERWISE NOTED, SHALL BE OF ALLOY 6063-T5 OR GREATER.
3. ALL HOLES TO BE DRILLED OR PUNCHED.
4. STEEL WELDING SHALL CONFORM TO AMERICAN WELDING SOCIETY STANDARD D1. 1-10. ELECTRODES SHALL CONFORM TO AWS 5.1, CLASS E70S-5.
5. ALUMINUM WELDING SHALL CONFORM TO AMERICAN WELDING SOCIETY STANDARD D1. 2-08. ELECTRODES SHALL CONFORM TO AWS/SFA 5.10 CLASS ER4043.
6. ALL WELDING TO BE DONE AT TOLAR MANUFACTURING COMPANY, INC. FACILITY.
7. ALL CORPORATE PROCEDURES, INCLUDING FABRICATION, MUST BE IN COMPLIANCE WITH TOLAR MANUFACTURING CO. INC'S QUALITY CONTROL MANUAL.
8. THE CONCRETE PAD SIZES SHOWN ARE STANDARD MINIMUM REQUIREMENTS AND ARE FOR REFERENCE ONLY. THE PAD MAY NEED TO BE REINFORCED OR ENLARGED DEPENDING ON LOCAL CODES AND LOADING CONDITIONS.



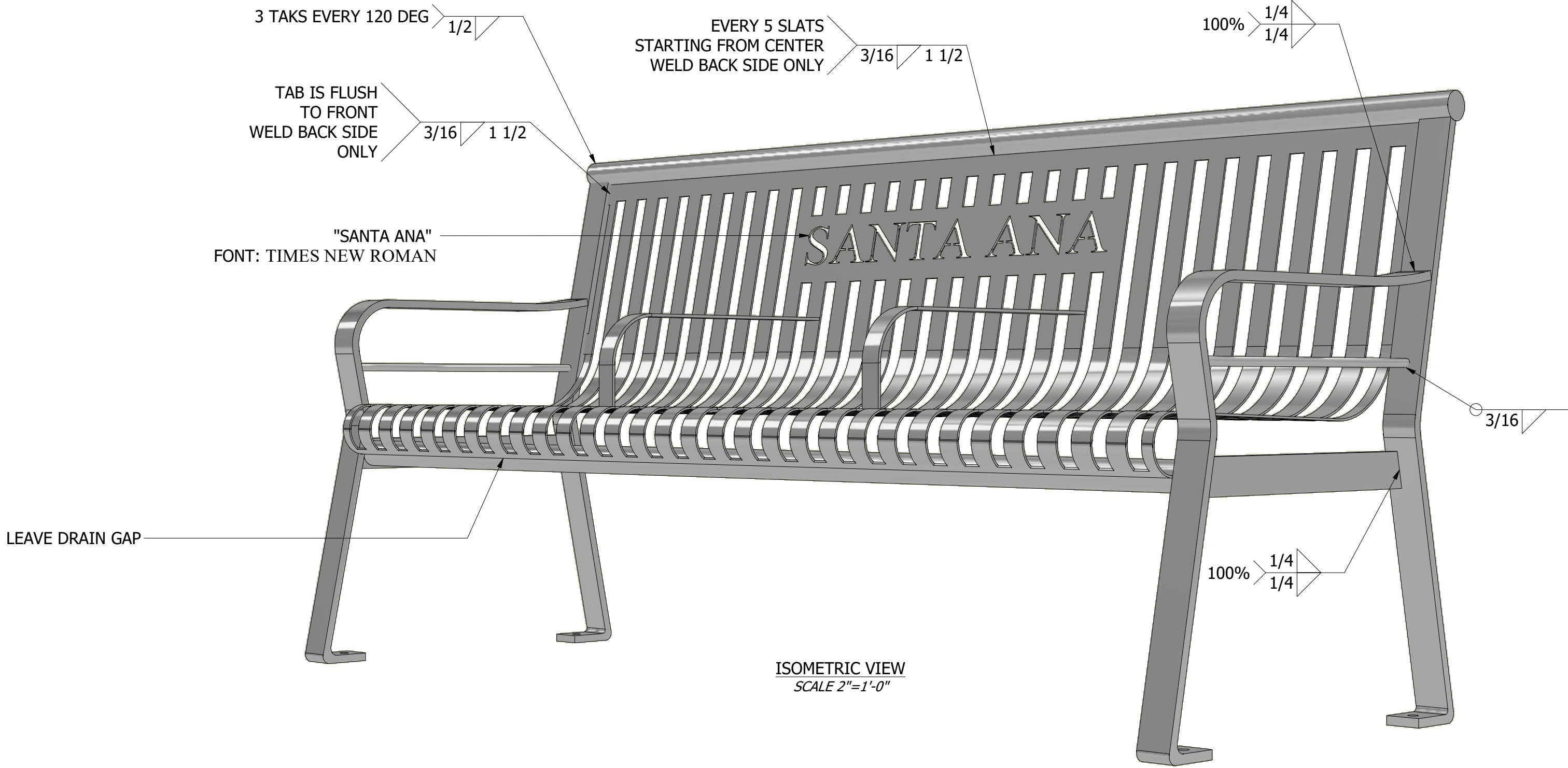
TOP VIEW  
SCALE 1"=1'-0"



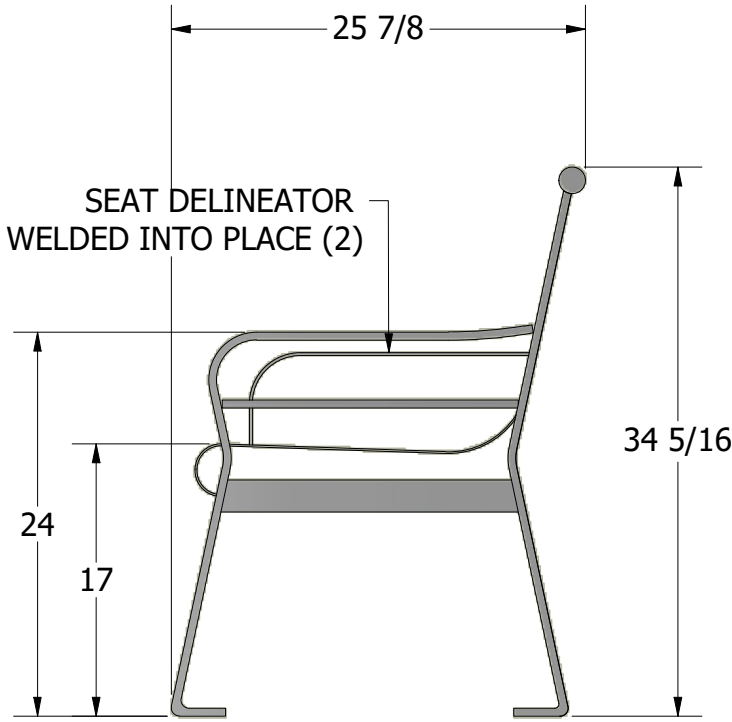
FRONT VIEW  
SCALE 1"=1'-0"



SECTION -  
SCALE 1"=1'-0"



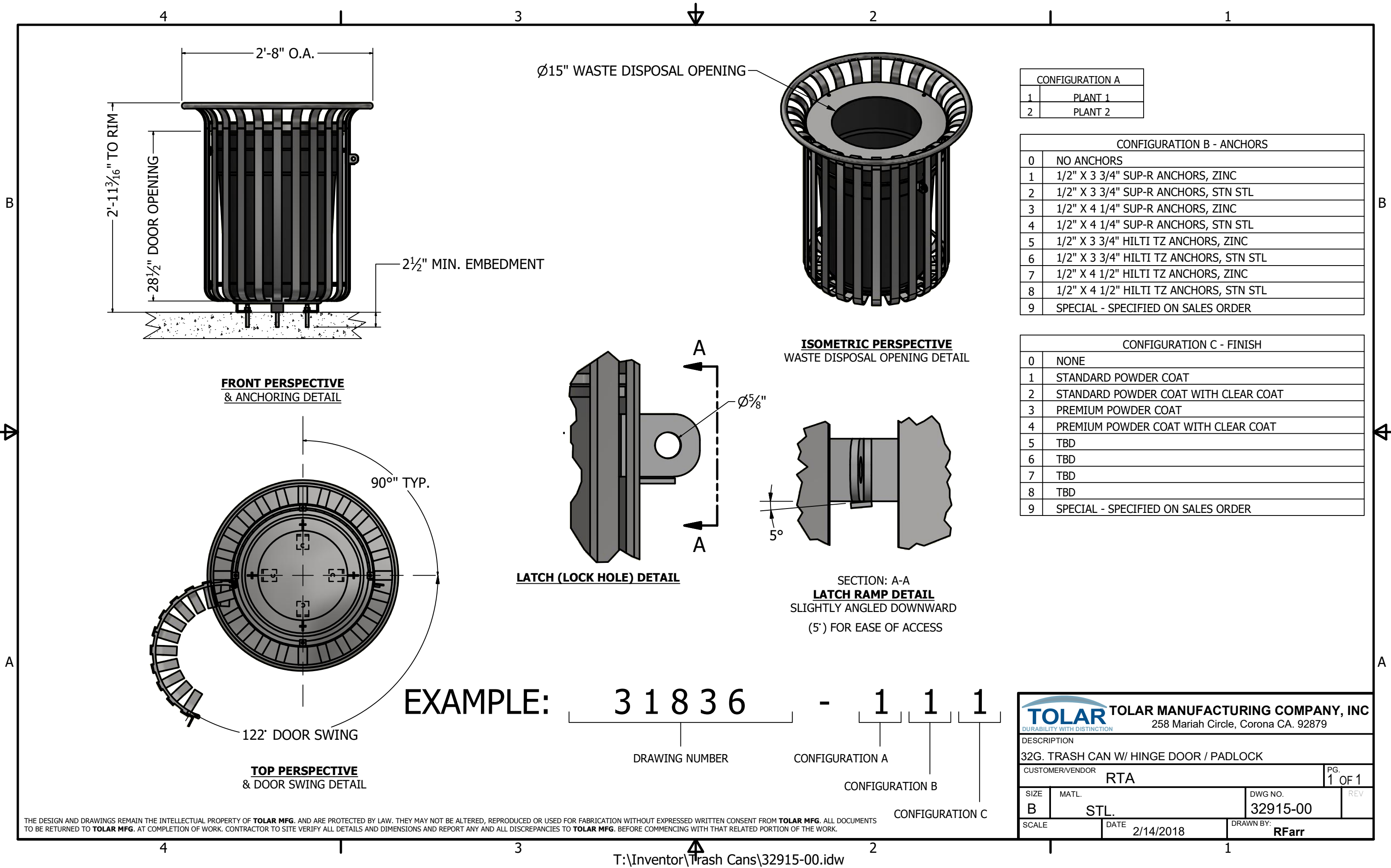
ISOMETRIC VIEW  
SCALE 2"=1'-0"




SIDE VIEW  
SCALE 1"=1'-0"

PARTS LIST			
ITEM	QTY	PART NUMBER	DESCRIPTION
2	1	37826-00	6' STEEL STRAP CUSTOM BENCH,TOP PIPE
3	1	37827-00	6' STL STRAP CUSTOM BENCH, BOTTOM PIPE
4	1	27765-00	STRAP BACK BENCH, RIGHT SIDE
8	1	27766-00	STRAP BACK BENCH LEG WELDMENT, LEFT SIDE
6	1	37825-00	BENCH PLATFORM, FORMED - SANTA ANA,C A
7	2	27601-00	SEAT DELINEATOR

THE DESIGN AND DRAWINGS REMAIN THE INTELLECTUAL PROPERTY OF TOLAR MFG. AND ARE PROTECTED BY LAW. THEY MAY NOT BE ALTERED, REPRODUCED OR USED FOR FABRICATION WITHOUT EXPRESSED WRITTEN CONSENT FROM TOLAR MFG. ALL DOCUMENTS TO BE RETURNED TO TOLAR MFG. AT COMPLETION OF WORK. CONTRACTOR TO SITE VERIFY ALL DETAILS AND DIMENSIONS AND REPORT ANY AND ALL DISCREPANCIES TO TOLAR MFG. BEFORE COMMENCING WITH THAT RELATED PORTION OF THE WORK.				TOLAR MANUFACTURING COMPANY, INC 258 Mariah Circle, Corona CA. 92879			
				SANTA ANA CUSTOM STRAP BENCH			
CUSTOMER/VENDOR				SANTA ANA, CA			
SIZE	MATL.	ALL STEEL		DWG NO.	37824-00		
D							
SCALE	DATE	5/28/2020		DRAWN BY:	RFarr		
AS NOTED							



THE DESIGN AND DRAWINGS REMAIN THE INTELLECTUAL PROPERTY OF TOLAR MFG. AND ARE PROTECTED BY LAW. THEY MAY NOT BE ALTERED, REPRODUCED OR USED FOR FABRICATION WITHOUT EXPRESSED WRITTEN CONSENT FROM TOLAR MFG. ALL DOCUMENTS TO BE RETURNED TO TOLAR MFG. AT COMPLETION OF WORK. CONTRACTOR TO SITE VERIFY ALL DETAILS AND DIMENSIONS AND REPORT ANY AND ALL DISCREPANCIES TO TOLAR MFG. BEFORE COMMENCING WITH THAT RELATED PORTION OF THE WORK.



TOLAR MANUFACTURING COMPANY, INC  
258 Mariah Circle, Corona CA. 92879

DESCRIPTION			
32G. TRASH CAN W/ HINGE DOOR / PADLOCK			
CUSTOMER/VENDOR			PG.
RTA			1 OF 1
SIZE	MATL.	DWG NO.	REV
B	STL.	32915-00	
SCALE	DATE	DRAWN BY:	
	2/14/2018	RFarr	