

July 31, 2023

Arturo Rodriguez
 Assistant Public Works
 Maintenance Manager
 City of Santa Ana
 20 Civic Center Plaza
 Santa Ana, CA 92701

Subject: Sweeping of City Park's Parking Lots Quote

Dear Mr. Rodriguez:

We are in receipt of your request for pricing/quote for the city park's parking lots. After review of the aerial maps we have based our pricing on a per parking lot basis rather than curb mile, this approach takes into account the specific requirements and complexities of each of the parking lots listed. Please see pricing below.

	Park Sites	Rate Per Hour*	Unit (1xMonth)	Extended Price (Annual Total)
1	Adams	\$ 250.00	12	\$ 3,000.00
2	Bomo Koral	\$ 250.00	12	\$ 3,000.00
3	Cabrillo	\$ 250.00	12	\$ 3,000.00
4	Centennial	\$ 350.00	12	\$ 4,200.00
5	Cesar Chavez Campesino	\$ 250.00	12	\$ 3,000.00
6	Delhi	\$ 350.00	12	\$ 4,200.00
7	El Salvador	\$ 250.00	12	\$ 3,000.00
8	Edna	\$ 250.00	12	\$ 3,000.00
9	Heritage	\$ 250.00	12	\$ 3,000.00
10	Jerome	\$ 250.00	12	\$ 3,000.00
11	Madison	\$ 350.00	12	\$ 4,200.00
12	Memorial	\$ 350.00	12	\$ 4,200.00
13	Morrison	\$ 250.00	12	\$ 3,000.00
14	Portola	\$ 250.00	12	\$ 3,000.00
15	Riverview	\$ 250.00	12	\$ 3,000.00
16	Rosita	\$ 350.00	12	\$ 4,200.00
17	Santa Anita	\$ 250.00	12	\$ 3,000.00
18	Carl Thornton	\$ 250.00	12	\$ 3,000.00
19	Windsor	\$ 250.00	12	\$ 3,000.00
	Total			\$63,000.00

** Per hour rate will be charged at the full hour.*

We are offering you an hourly rate, as well as, an extended rate. We anticipate that some of these parking lots will involve manual labor, such as blowing of corners and raised medians which may require more time.

If you have any further questions, please feel free to reach out to us. We are excited for this opportunity to continue being a proud partner to the City of Santa Ana and look forward to next steps.

Sincerely,

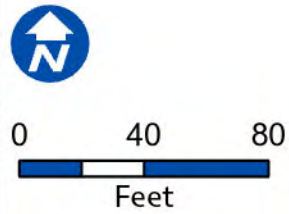


Matthew Niklas
Executive Vice President



- Playground Asset (2)
- Facility Structure**
 - ▭ Concession Stand (1)
 - ▭ Public Utility Structure (3)
 - ▭ Restroom (1)
- Athletic Field**
 - ▭ Baseball Field (1)
- Athletic Court**
 - ▭ Basketball Court (3)
 - ▭ GIS Park Boundary (1)

0.12 curb miles

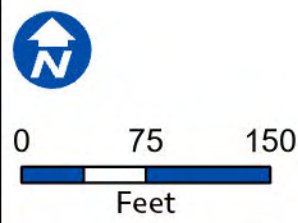


Adams Park

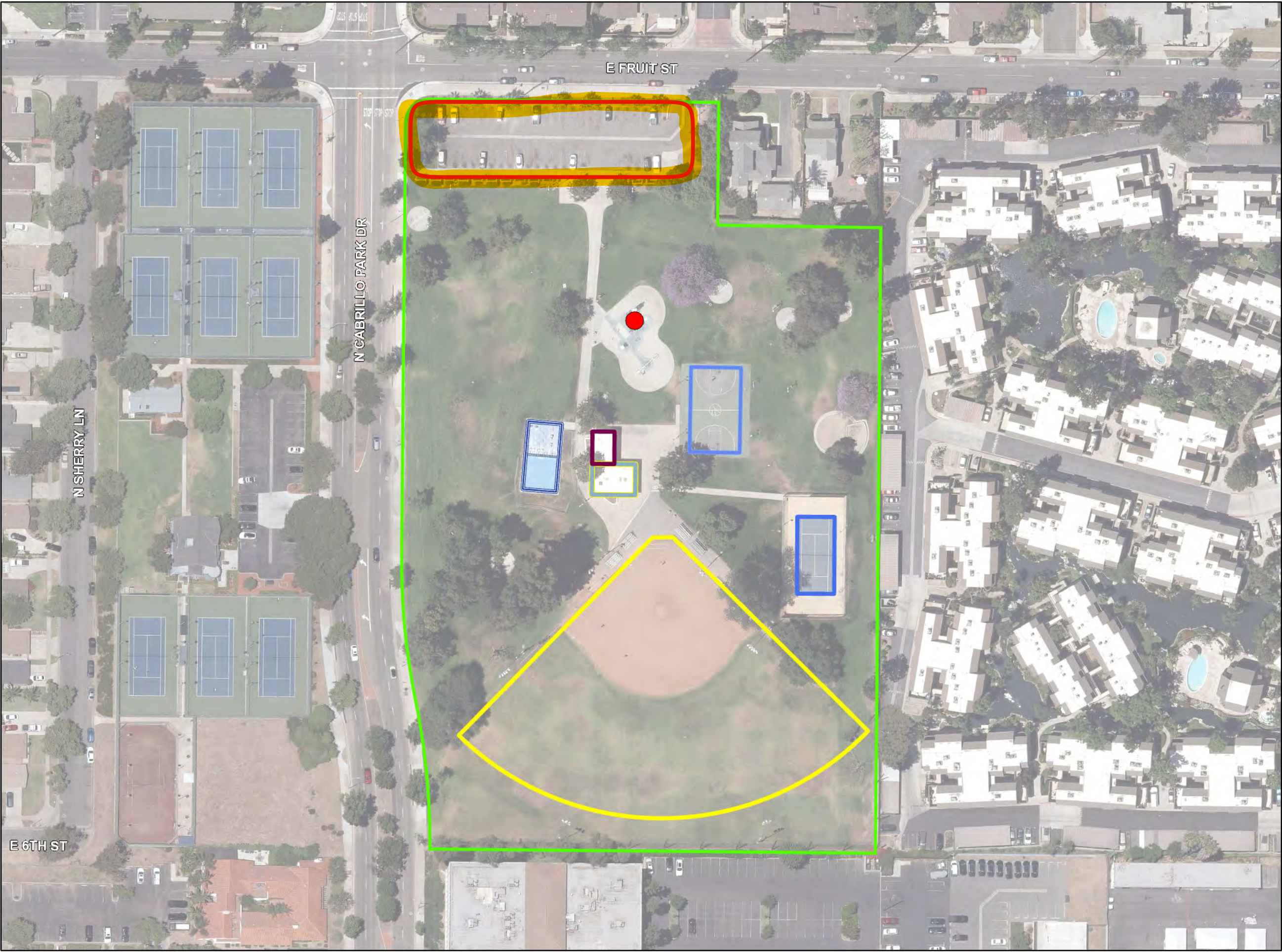


- Playground Asset (2)
- Athletic Field**
- ▭ Multipurpose Field (1)
- ▭ GIS Park Boundary (1)

.3 curb miles

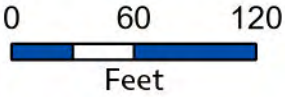


Bomo Koral Park



- Playground Asset (1)
- Facility Structure**
 - ▭ Concession Stand (1)
 - ▭ Restroom (1)
- Athletic Field**
 - ▭ Baseball Field (1)
- Athletic Court**
 - ▭ Basketball Court (1)
 - ▭ Fitness Court (1)
 - ▭ Tennis Court (1)
 - ▭ GIS Park Boundary (1)

.13 curb miles

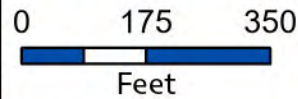


Cabrillo Park



- Playground Asset (3)
- Facility Structure**
 - ▭ Park Operations Struc. (2)
 - ▭ Restroom (5)
- Athletic Field**
 - ▭ Football Field (1)
 - ▭ Multipurpose Field (1)
 - ▭ Soccer Field (3)
- Athletic Court**
 - ▭ Skate Park (1)
 - ▭ Waterbody (2)
- ▭ GIS Park Boundary (1)

3.08 curb miles

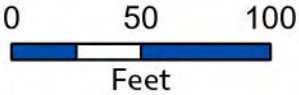


Centennial Regional Park

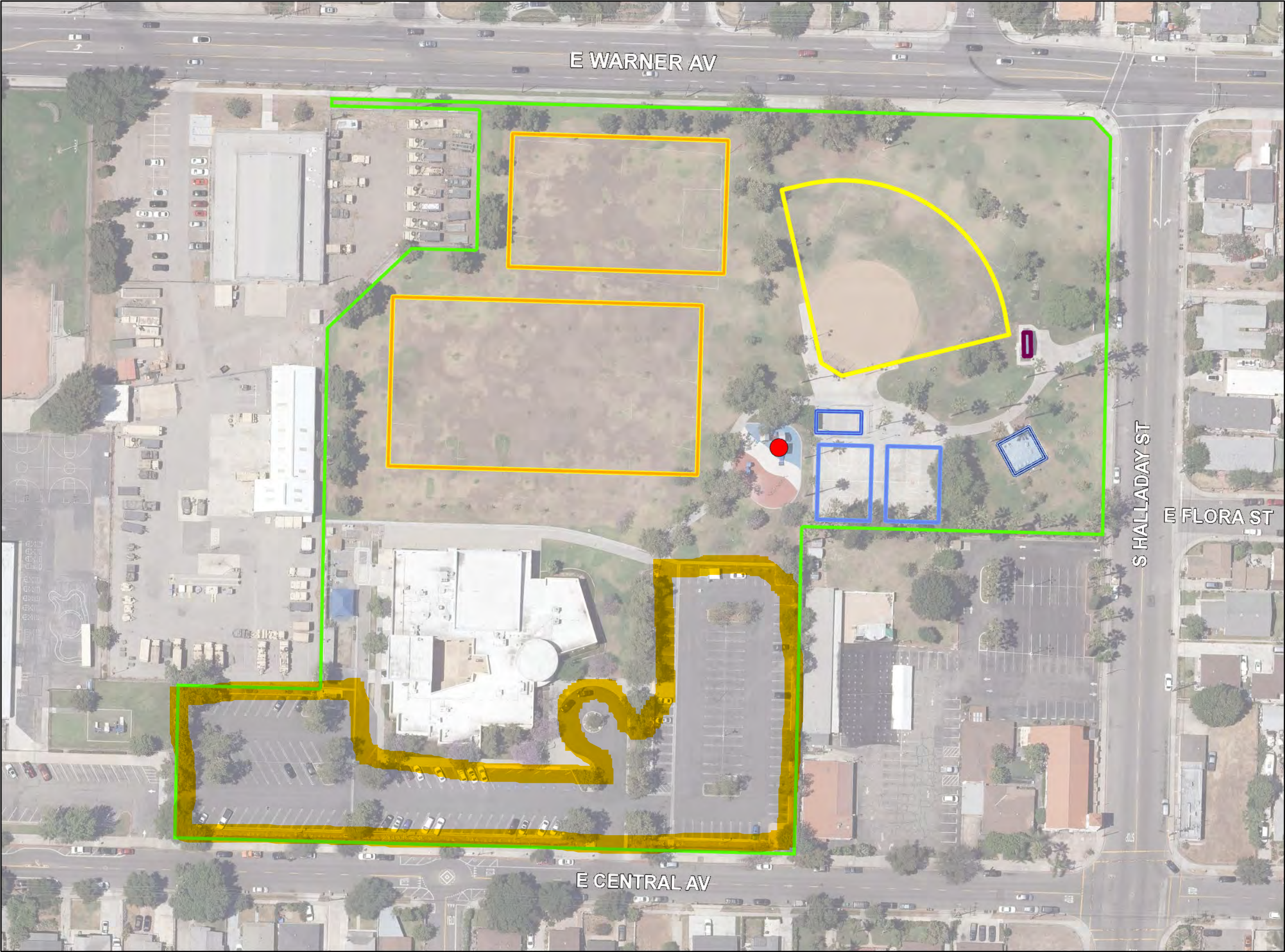


- Playground Asset (2)
- Facility Structure**
- ▭ Restroom (1)
- Athletic Field**
- ▭ Multipurpose Field (1)
- Athletic Court**
- ▭ Basketball Court (1)
- ▭ Hand Ball Court (1)
- ▭ GIS Park Boundary (1)

.09 curb miles

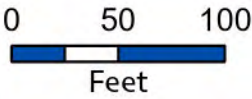


**Cesar Chavez
Campesino Park**

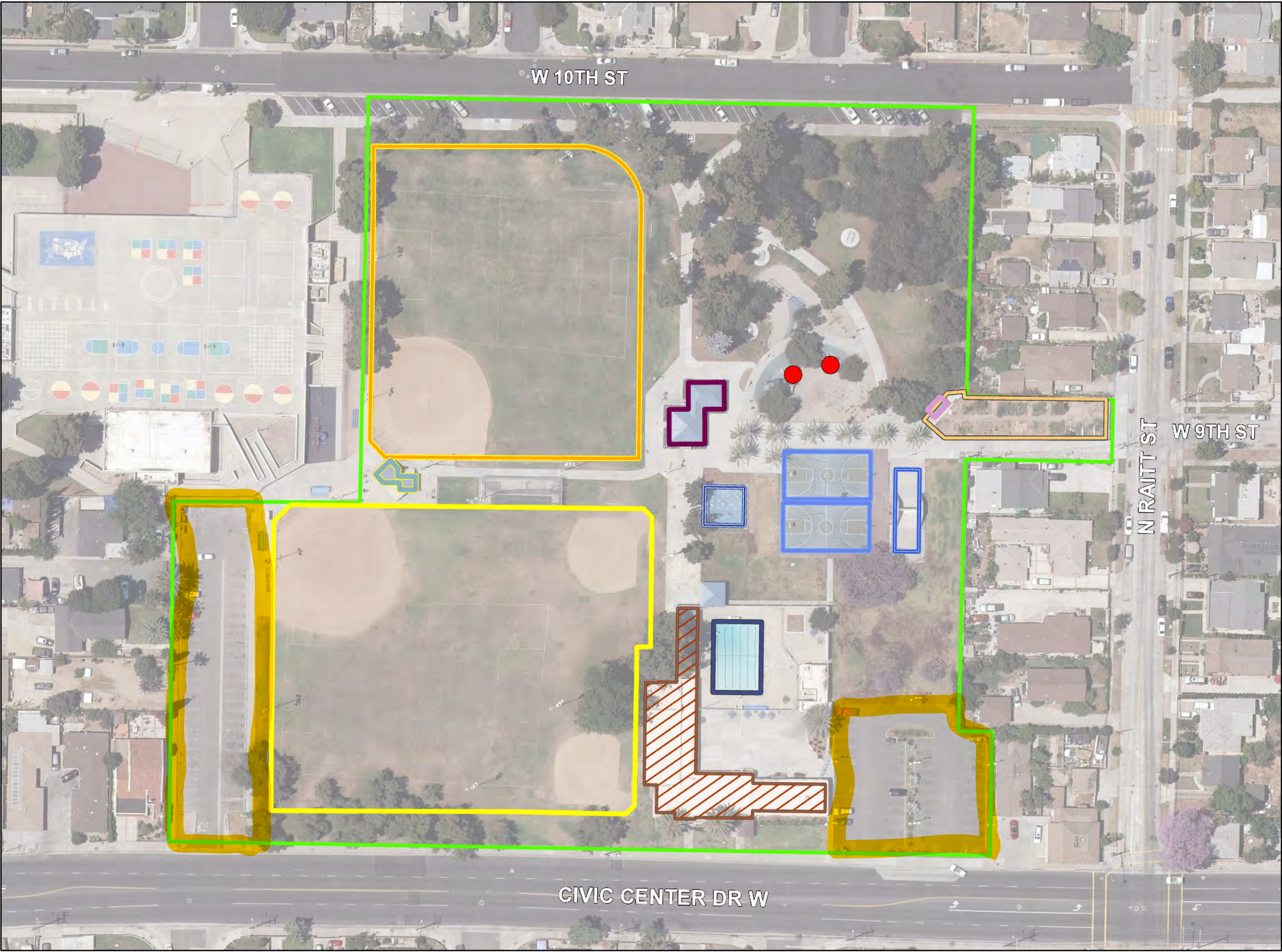


- Playground Asset (1)
- Facility Structure**
 - ▭ Restroom (1)
- Athletic Field**
 - ▭ Baseball Field (1)
 - ▭ Multipurpose Field (2)
- Athletic Court**
 - ▭ Basketball Court (2)
 - ▭ Fitness Court (1)
 - ▭ Hand Ball Court (1)
 - ▭ GIS Park Boundary (1)

.5 curb miles

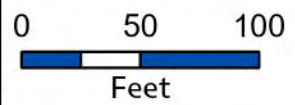


Delhi Park

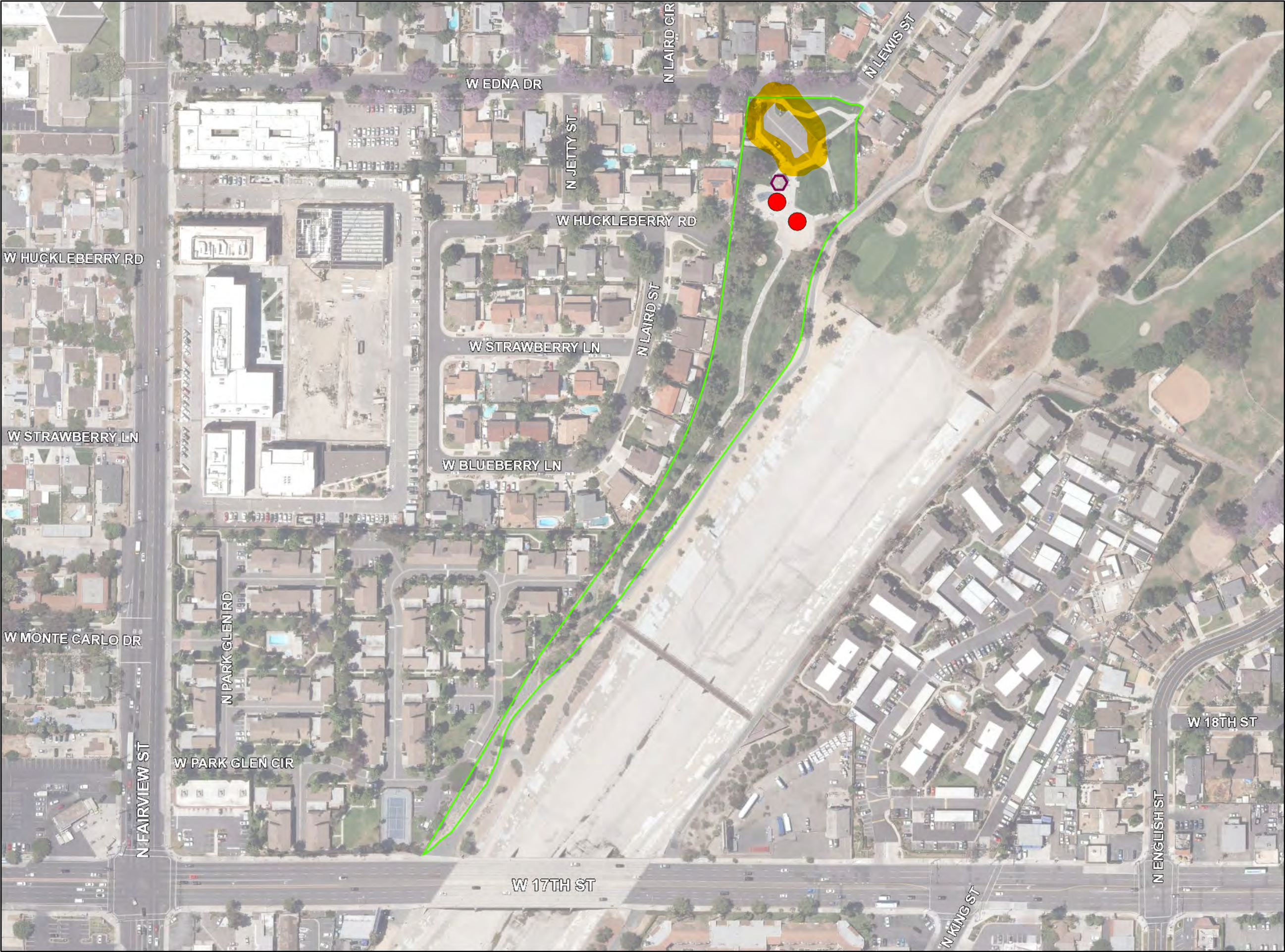


- Playground Asset (2)
- Facility Structure**
 - ▨ Community Center (1)
 - ▭ Concession Stand (1)
 - ▭ Public Garden Building (1)
 - ▭ Restroom (1)
- Athletic Field**
 - ▭ Baseball Field (1)
 - ▭ Multipurpose Field (1)
 - ▭ Garden (1)
- Athletic Court**
 - ▭ Basketball Court (2)
 - ▭ Fitness Court (1)
 - ▭ Hand Ball Court (1)
 - ▭ Pool (1)

.24 curb miles

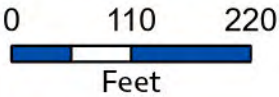


El Salvador Park



- Playground Asset (2)
- Facility Structure**
- ▭ Restroom (1)
- ▭ GIS Park Boundary (1)

.06 curb miles

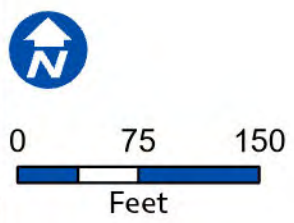


Edna Park



- Playground Asset (1)
- Facility Structure**
 - ▭ Public Utility Structure (1)
 - ▭ Restroom (1)
- Athletic Field**
 - ▭ Baseball Field (1)
 - ▭ GIS Park Boundary (1)

.14 curb miles

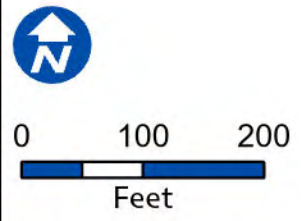


Heritage Park

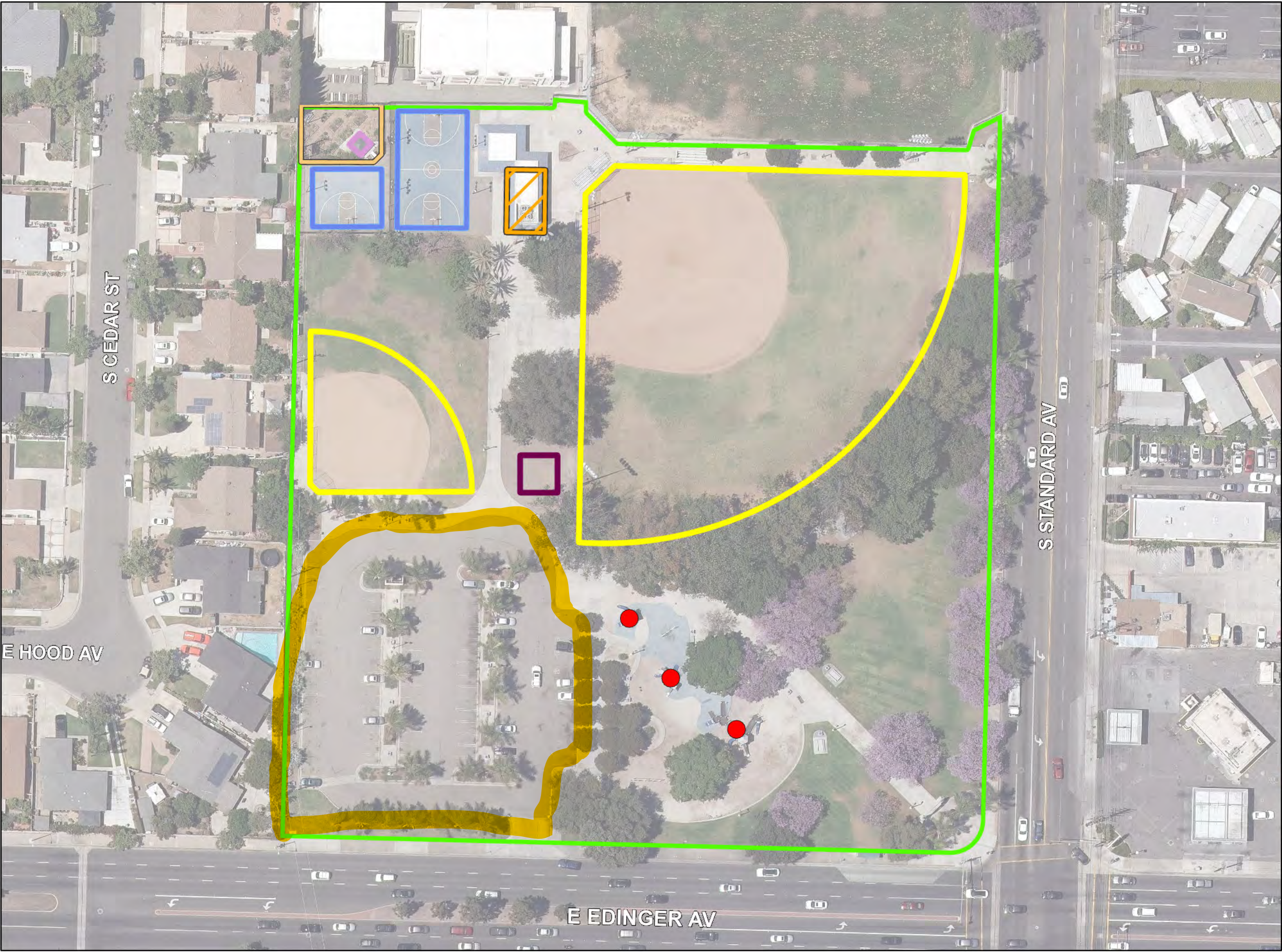


- Playground Asset (2)
- Facility Structure**
 - ▨ Community Center (1)
 - ▨ Public Utility Structure (3)
 - ▨ Restroom (1)
- Athletic Field**
 - ▨ Baseball Field (4)
 - ▨ Garden (1)
- Athletic Court**
 - ▨ Fitness Court (1)
 - ▨ Hand Ball Court (1)
 - ▨ Pool (1)
- ▨ GIS Park Boundary (1)

.7 curb miles

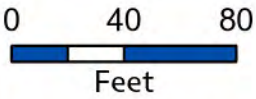


Jerome Park

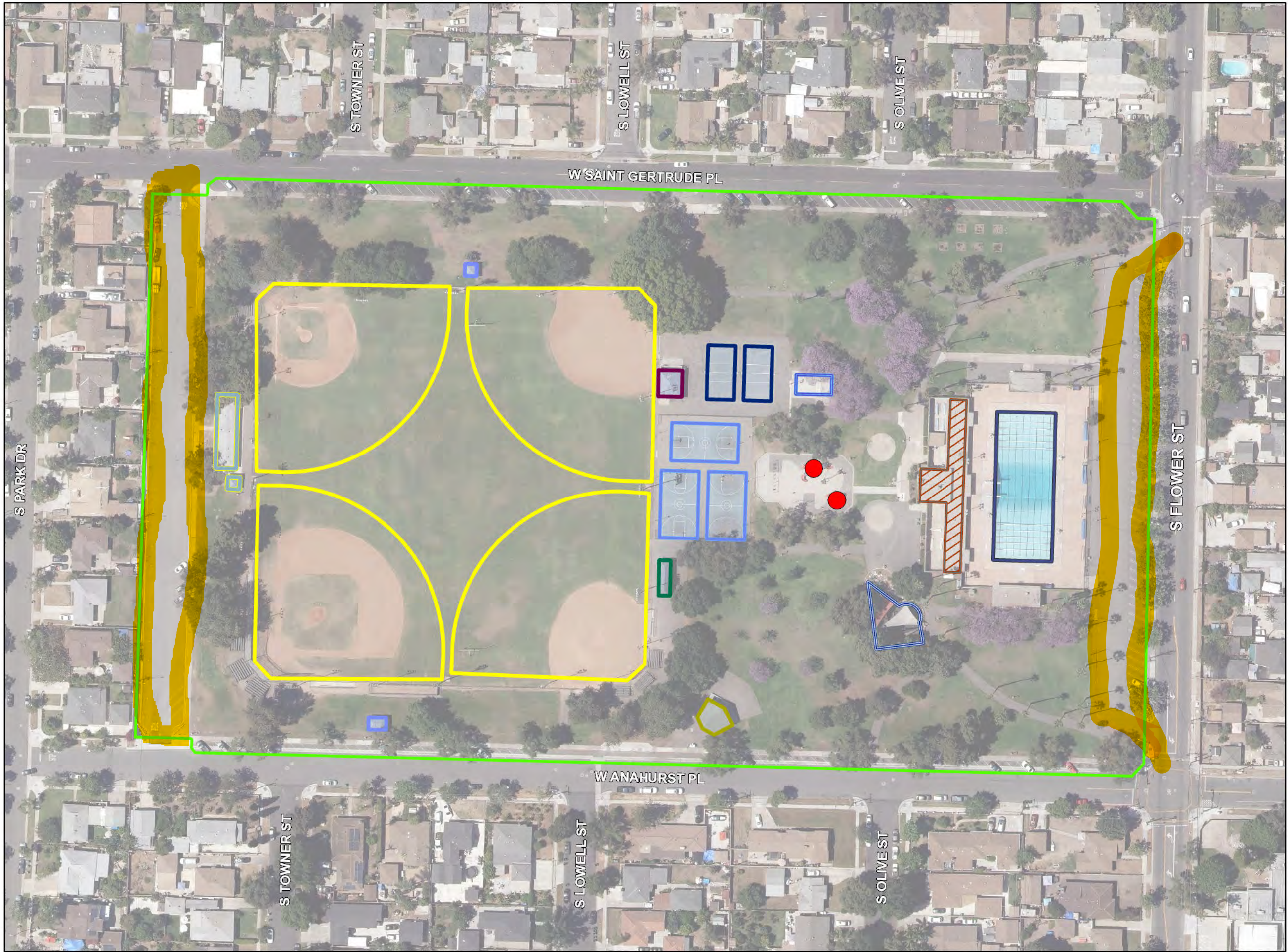


- Playground Asset (3)
- Facility Structure**
 - Public Garden Building (1)
 - ▨ Public Utility Structure (1)
 - Restroom (1)
- Athletic Field**
 - ▭ Baseball Field (2)
 - ▭ Garden (1)
- Athletic Court**
 - ▭ Basketball Court (2)
 - ▭ GIS Park Boundary (1)

.3 curb miles

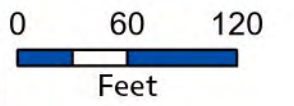


Madison Park

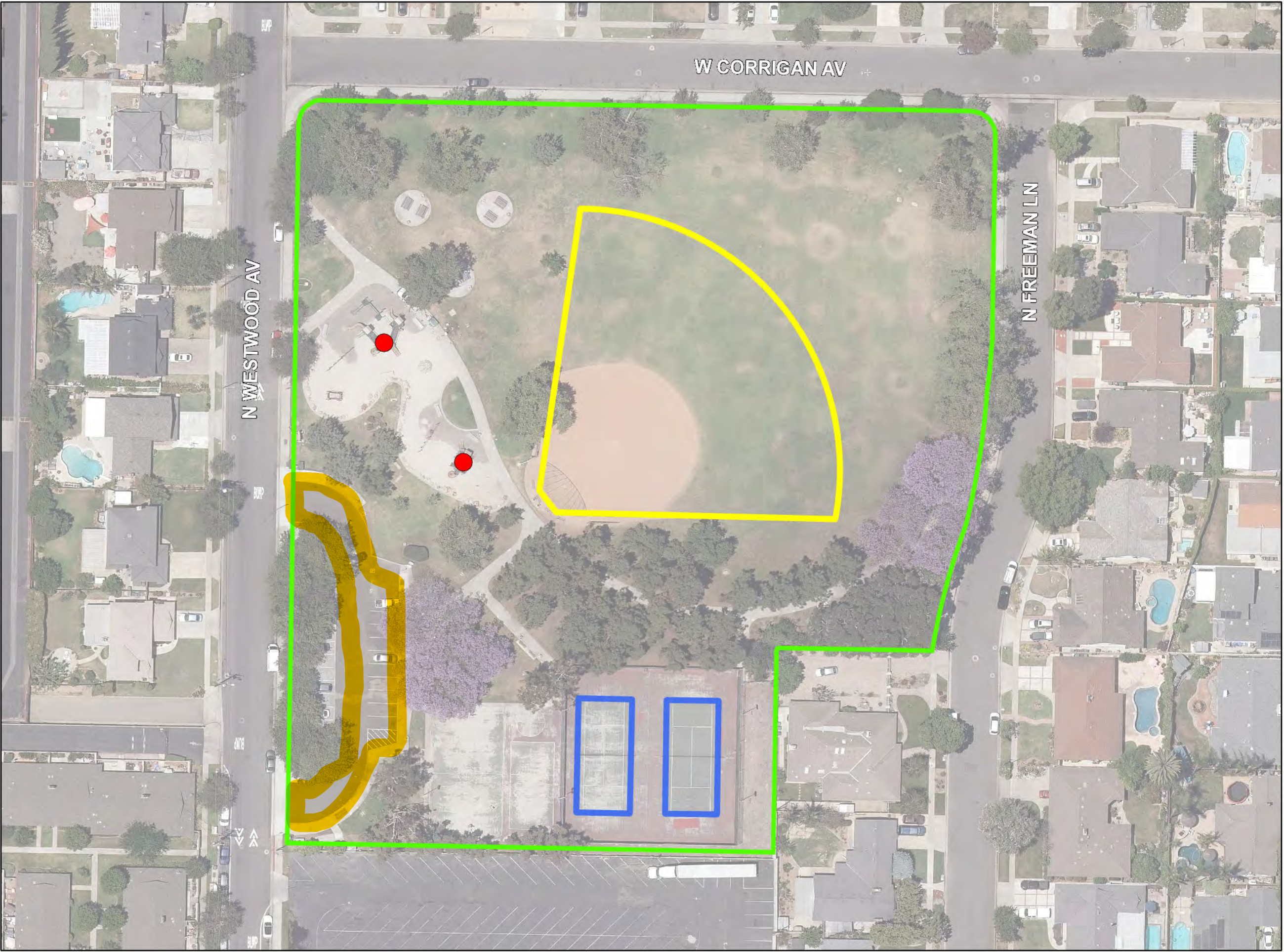


- Playground Asset (2)
- Facility Structure**
 - Community Building (1)
 - Community Center (1)
 - Concession Stand (1)
 - Park Operations Struc. (2)
 - Restroom (1)
 - Storage Structure (1)
- Athletic Field**
 - Baseball Field (4)
- Athletic Court**
 - Basketball Court (3)
 - Fitness Court (1)
 - Hand Ball Court (1)
 - Volleyball Court (2)

.43 curb miles

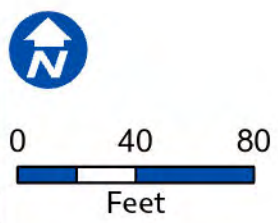


Memorial Park

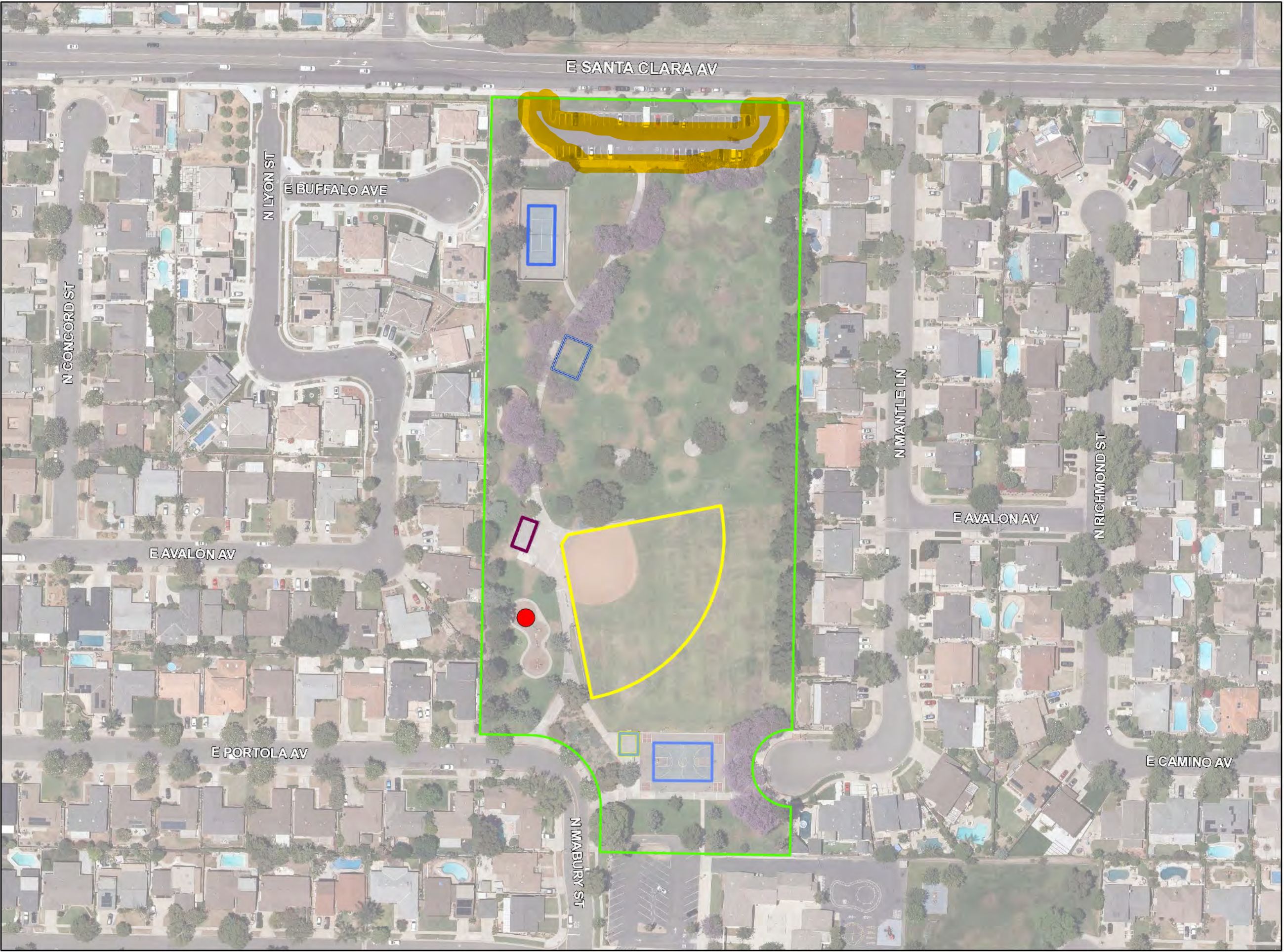


- Playground Asset (2)
- Athletic Field**
 - ▭ Baseball Field (1)
- Athletic Court**
 - ▭ Tennis Court (2)
 - ▭ GIS Park Boundary (1)

.1 curb miles

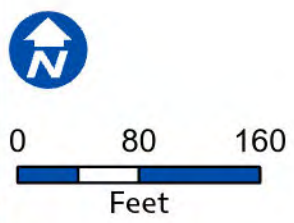


Morrison Park



- Playground Asset (1)
- Facility Structure**
 - ▭ Concession Stand (1)
 - ▭ Restroom (1)
- Athletic Field**
 - ▭ Baseball Field (1)
- Athletic Court**
 - ▭ Basketball Court (1)
 - ▭ Fitness Court (1)
 - ▭ Tennis Court (1)
 - ▭ GIS Park Boundary (1)

.16 curb miles

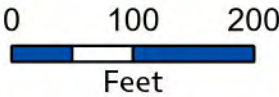


Portola Park



- Playground Asset (1)
- Facility Structure**
 - Concession Stand (1)
 - Public Utility Structure (1)
 - Restroom (1)
- Athletic Field**
 - Baseball Field (3)
- Athletic Court**
 - Basketball Court (1)
- GIS Park Boundary (1)

.23 curb miles

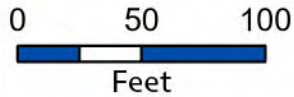


Riverview Park

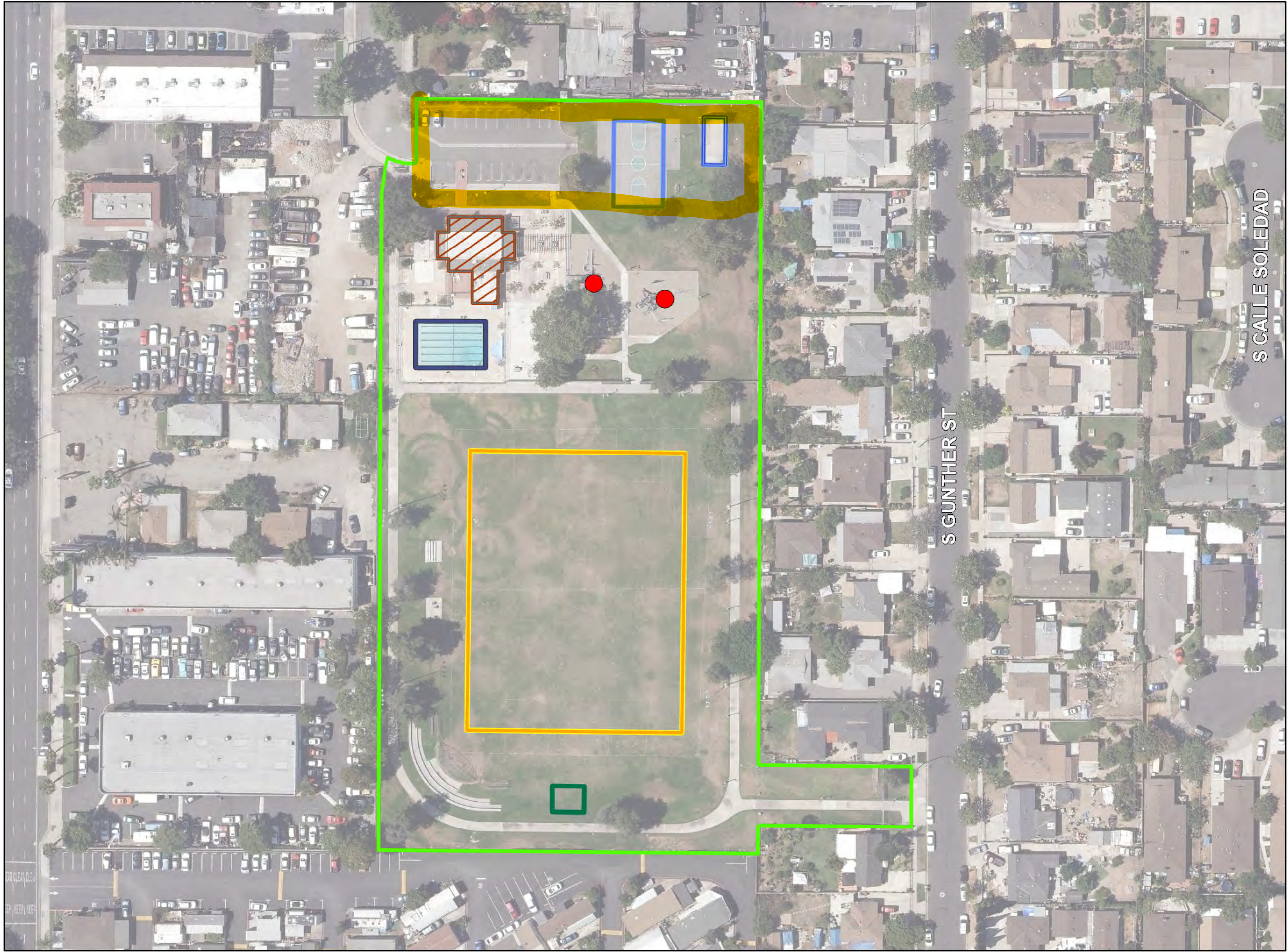


- Playground Asset (1)
- Facility Structure**
 - ▨ Community Center (1)
 - ▨ Concession Stand (1)
 - ▨ Restroom (2)
- Athletic Field**
 - ▨ Baseball Field (1)
 - ▨ Soccer Field (1)
- Athletic Court**
 - ▨ Fitness Court (1)
 - ▨ Hand Ball Court (1)
 - ▨ Pool (1)
- ▨ GIS Park Boundary (1)

.32 curb miles

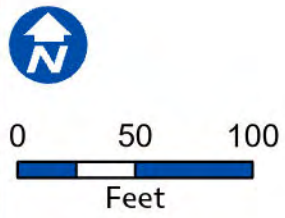


Rosita Park



- Playground Asset (2)
- Facility Structure**
 - Community Center (1)
 - Storage Structure (1)
- Athletic Field**
 - Multipurpose Field (1)
- Athletic Court**
 - Basketball Court (1)
 - Hand Ball Court (1)
 - Pool (1)
- GIS Park Boundary (1)

.11 curb miles

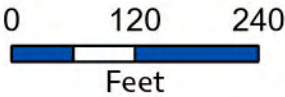


Santa Anita Park



- Playground Asset (6)
- Facility Structure**
 - ▭ Public Utility Structure (2)
 - ▭ Restroom (2)
- Athletic Field**
 - ▭ Baseball Field (3)
- Athletic Court**
 - ▭ Basketball Court (1)
 - ▭ Waterbody (1)
 - ▭ GIS Park Boundary (1)

.63 curb miles total

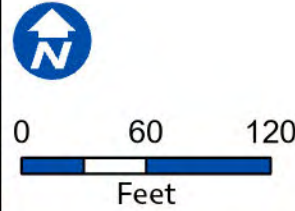


Carl Thornton Park



- Playground Asset (1)
- Facility Structure**
 - ▭ Restroom (1)
 - ▭ Storage Structure (1)
- Athletic Field**
 - ▭ Multipurpose Field (1)
- Athletic Court**
 - ▭ Tennis Court (2)
- ▭ GIS Park Boundary (1)

.2 curb miles



Windsor Park